

January 2, 2008

**SHELBY COUNTY BOARD MEETING AGENDA**

**January 9, 2008 – 9:00 A. M. in Courtroom B**

1. Call to Order - Pledge of Allegiance
2. Roll Call
3. Approval of Minutes
4. County Highway Engineer Alan Spesard – Highway Engineer's Report
5. Chuck Stanley – Zoning Report
6. Committee Reports
7. Chairman Frazier Updates
8. Chairman Frazier Appointments
9. Correspondence
10. Public Body Comment
11. Adjournment

Coffee: Jury Room B - 8:30 A. M.

**SHELBY COUNTY BOARD MEETING**

**January 9, 2008 – 9:00 A.M.**

The Shelby County Board met on Wednesday, January 9, 2008 at 9:00 A.M. at the Courthouse in Shelbyville, Illinois.

Board Chairman George Frazier called the meeting to order and all present recited the Pledge of Allegiance.

The Clerk called the roll. There were no absentees.

Minutes of the December 12, 2007 meeting were presented for approval.

MOTION: Lloyd Spencer made motion to approve the Minutes of the December 12, 2007 Board meeting as presented.  
Norma Stewart seconded the motion.

VOTE: All voted aye by voice and the motion carried.

Chairman Frazier informed the Board that he regretfully accepted a letter of resignation received last month from Robert Connelly. Mr. Connelly resigned from the Board due to health reasons. Chairman Frazier noted Mr. Connelly's many years of productive service to the County and stated that his absence will be missed.

Alan Spesard, County Highway Engineer, addressed the Board to give the highway report. Mr. Spesard requested approval for a Resolution to award to various low bidders the contracts for Shelby County 2008 Motor Fuel Tax rock bids. The low bidders are enumerated on the Resolution.

MOTION: Paul Hoene made motion to approve the Resolution to award contracts to the low bidders for the Shelby County 2008 Motor Fuel Tax rock materials as presented.  
John "Jack" Roessler seconded the motion

VOTE: All voted aye by voice and the motion carried.

Mr. Spesard requested approval for a Resolution to award to Clark County Supply the contract for various sizes of pipes and bands for \$50,871.90.

MOTION: Lloyd Spencer made motion to approve the Resolution to award the contract for pipes and bands to Clark County Supply as presented.  
John "Jack" Roessler seconded the motion.

VOTE: All voted aye by voice and the motion carried.

Ending his report, Mr. Spesard gave the Board some highlights and updates on the work in the County Highway Department. The Highway Department's Annual Report was presented to the Board and highlighted briefly by Mr. Spesard. Danielle Culberson, Marge Kearney's replacement, was introduced by Mr. Spesard.

Zoning Administrator Chuck Stanley updated the Board on the activities of the Zoning Department. Mr. Stanley highlighted the Zoning monthly report. A Resolution for rezoning from Residential to General Business for 10 acres known as the Weaver Dale Subdivision (PID's 2409-30-04-302-002 through 2409-30-04-302-007, 2409-30-04-302-009 and 2409-30-04-302-010) by applicant Bruce Steinke, to establish vacation rental properties was presented. The Planning Commission did not recommend approval but approval was recommended by the Zoning Board of Appeals.

Walter Lookofsky, Attorney for Bruce Steinke, addressed the Board and presented Mr. Steinke's proposal and the location of the development. Those who addressed the Board speaking in support of Mr. Steinke's rezoning were Bruce Steinke, Ronda Doemelt, Freddie Fry, Tourism Director, and Sandra Steinke, spouse of Bruce Steinke. Those who addressed the Board speaking against the rezoning were Tom Brown, Pam White and Glenn Komnick. Ms. White submitted letters of objection to the rezoning from other neighbors. A lengthy discussion followed.

MOTION: Jim Warren made motion to approve the Resolution to rezone the above-stated parcels from Residential to General Business as presented.  
Lloyd Spencer seconded the motion.

Discussion continued. Chairman Frazier called for a roll call vote.

VOTE: Roll Call Vote  
Aye: Amling, Clark, Durbin, Hayden, Hoene, Reynolds, Roessler, Sims, Spencer, Stewart, Storm, Warren  
Nay: Barr, Behl, Bennett, Jordan, Lenz, May, Pauley, Robertson,  
Not Voting: Frazier  
Motion Carried

**Shelby County Board Meeting**  
**January 9, 2008**

Chairman Frazier called for Committee Reports.

Ralph May, Chairman of Public Buildings Committee, stated that the Committee met with an architect regarding Courthouse replacement windows and replacing the boiler. Mr. May stated the basement restroom had been repaired. Mr. Warren, a Committee member, noted that replacing the ballasts in the Courthouse lighting was discussed. The Public Buildings Committee will continue to meet and research the Courthouse projects.

Floyd Storm, Chairman of the Law Enforcement Committee, reported that Hanson Communications wants a conference call tomorrow morning to discuss the 9-1-1 project.

Chairman Frazier, Chairman of the Budget Committee, informed the Board that the Committee met with Farm Bureau reps who requested a courtesy visit to discuss BPI and the County's methane lease. All agreed to keep the lines of communication open. Rob Amling stated that according to State's Attorney Allan Lolie, he will be communicating with BPI's Dan Anderson.

At this time, Chairman Frazier requested the following appointments:

**Shelby County Rescue Squad re-appoints Glenn R. "Dick" Clark.**

**Shelby County Zoning Board of Appeals re-appoints Fred Killam.**

**Regional Office of Education re-appoints George Frazier.**

MOTION: Richard Reynolds made motion to approve the Chairman's request for the above-stated appointments.  
Ralph May seconded the motion.

VOTE: All voted aye by voice and the motion carried.

Chairman Frazier received a correspondence from Senator Barack Obama regarding the President's proposal to cut critical labor and employment programs. Senator Obama continues to fight these proposed cuts.

At this time, Chairman Frazier called for Public Body Comment.

Steve Melega, Health Department Administrator, stated that required signage regarding the Smoke Free Illinois law has been placed in County Buildings.

There was no further business to come before the Shelby County Board.

MOTION: Glenn R. "Dick" Clark made motion to assess mileage and per Diem for the January meetings, to pay the bills and payroll as approved by the Committees and adjourn until the next regular meeting to be held on February 13, 2008.  
Barbara Bennett seconded the motion.

VOTE: All voted aye by voice, motion carried and the meeting was adjourned at 10:18 A.M.



Kathy A. Lantz  
Shelby County Clerk and Recorder

STATE OF ILLINOIS

ROLL CALL VOTES IN COUNTY BOARD

SHELBY COUNTY

January 9, 2008 SESSION

			ROLL CALL			QUESTIONS									
				1/19/2008	1/200	ON MOTIONS TO		ON MOTIONS TO		ON MOTIONS TO		ON MOTIONS TO		ON MOTIONS TO	
COUNTY BOARD MEMBERS	MILEAGE		A.M.	P.M.		AYE	NAY	AYE	NAY	AYE	NAY	AYE	NAY	AYE	NAY
217	AMLING, ROBERT	35	✓			✓									
110	BARR, KENNETH	50	✓				✓								
116	BEHL, ROBERT H.	42	✓				✓								
117	BENNETT, BARBARA	40	✓				✓								
133	CLARK, GLENN "DICK"	12	✓			✓									
143	CONNELLY, ROBERT		<i>resigned</i>												
214	DURBIN, JESSE	12	✓			✓									
490	FRAZIER, GEORGE		✓												
177	HAYDEN, RICHARD	44	✓			✓									
220	HOENE, PAUL	55	✓			✓									
193	JORDAN, ROBERT N.	31	✓				✓								
206	LENZ, LARRY	26	✓				✓								
218	MAY, RALPH	20	✓				✓								
457	PAULEY, ROGER	18	✓				✓								
458	REYNOLDS, RICHARD JR.	32	✓			✓									
181	ROBERTSON, ROBIN		✓				✓								
148	ROESSLER, JOHN JACK	12	✓			✓									
221	SIMS, TERRY JOE	24	✓			✓									
284	SPENCER, LLOYD		✓			✓									
137	STEWART, NORMA J	52	✓			✓									
291	STORM, FLOYD	32	✓			✓									
329	WARREN, JAMES	28	✓			✓									

12 ayes 8 nays  
1 not voting  
motion passed



December 14, 2007

Mr. George Frazier, Chairman  
Shelby County Board

After giving the matter a great deal of thought, I feel that the time has come for me to resign my seat on the County Board. My failing eye sight and other health concerns make it difficult for me to be an active member of the board and I feel it is in the best interest of everyone concerned if I resign at this time. I have enjoyed serving on the board and regret that I am unable to complete my term of office.

Sincerely,



Robert S. Connelly

Pipe Culvert  
Award

TO: THE SHELBY COUNTY BOARD

WE, THE MEMBERS OF THE ROAD AND BRIDGE COMMITTEE, HAVING  
EXAMINED THE ATTACHED

RESOLUTION

PETITION

AGREEMENT

DO HEREBY RECOMMEND APPROVAL OF SAME BY THE COUNTY BOARD.

RESPECTFULLY SUBMITTED,  
ROAD & BRIDGE COMMITTEE

[Redacted signature block]

**RESOLUTION**

2008-2

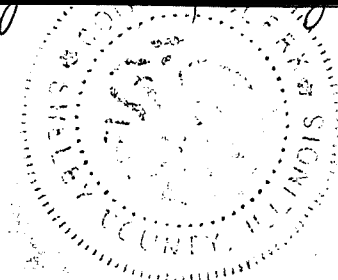
BE IT RESOLVED, by the County Board of Shelby County and State of Illinois, that Shelby County concurs in the awarding of a contract for various sizes of pipes and bands to CLARK COUNTY SUPPLY based on their low bid submitted at a letting held January 4, 2008, of \$ 24,818.40 for GROUP I, and \$ 26,053.50 for GROUP II.

STATE OF ILLINOIS     )  
  )  
COUNTY OF SHELBY    )

I, Kathy A. Lantz County Clerk in and for said County in the State aforesaid, and keeper of the records and files thereof, as provided by statute, do hereby certify the forgoing to be a true, perfect, and complete copy of a Resolution adopted by the County Board of Shelby County at its regular meeting held in Shelbyville, Illinois on January 9, 2008.

IN TESTIMONY WHEREOF, I have hereunto set my hand and affixed the seal of said County at my office in Shelbyville in said County this 9th day of January, 2008 A.D.

  
County Clerk



Rock David

TO: THE SHELBY COUNTY BOARD

WE, THE MEMBERS OF THE ROAD AND BRIDGE COMMITTEE, HAVING  
EXAMINED THE ATTACHED

RESOLUTION

PETITION

AGREEMENT

DO HEREBY RECOMMEND APPROVAL OF SAME BY THE COUNTY BOARD.

RESPECTFULLY SUBMITTED,  
ROAD & BRIDGE COMMITTEE

[Redacted signature area]

**RESOLUTION**

2008-01

BE IT RESOLVED, by the County Board of Shelby County that the following contracts be awarded as listed below as received at a letting held on January 4, 2008 for Shelby County Section 08-00000-00-GM.

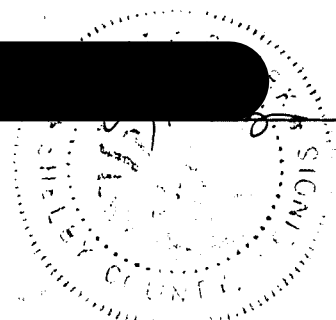
Group 1	Prosser Construction	350 Tons	CA14, CM14, CA15, CM15, CA16, CM16 @ \$8.50/TON – GRAVEL
Group 2	Mattoon Sand & Gravel	350 Tons	CA15, CM15 @ \$7.75/TON – GRAVEL
Group 3	Brush Creek Quarry	400 Tons	CA14, CM14, CA15, CM15, CA16, CM16 @ \$8.75/TON – CR. STONE
Group 4	Dwain Forby Trucking	750 Tons	CA14, CM15 @ \$13.50/TON – CR. STONE
Group 5	Millers Lime Service	500 Tons	CA10 @ \$9.20/TON – CR. STONE
Group 6	Brush Creek Quarry	500 Tons	CA14, CM14, CA15, CM15 @ \$8.75/TON – CR. STONE
Group 7	Nokomis Quarry Co.	250 Tons	CA14, CM14, CA15, CM15 @ \$10.25/TON – CR. STONE
Group 10	Nokomis Quarry Co.	250 Tons	AGG. SURF CSE TY B, CA-06 @ \$5.25/TON
Group 11	Brush Creek Quarry	400 Tons	AGG. SURF CSE TY B, CA-06 @ \$6.85/TON

STATE OF ILLINOIS     )  
  )  
COUNTY OF SHELBY    )

I, Kathy A. Rantz County Clerk in and for said County in the State aforesaid, and keeper of the records and files thereof, as provided by statute, do hereby certify the forgoing to be a true, perfect, and complete copy of a Resolution adopted by the County Board of Shelby County at its regular meeting held in Shelbyville, Illinois on January 9, 2008.

IN TESTIMONY WHEREOF, I have hereunto set my hand and affixed the seal of said County at my office in Shelbyville in said County this 9<sup>th</sup> day of January, 2008 A.D.

  
County Clerk



# **SHELBY COUNTY HIGHWAY DEPARTMENT**

## **ANNUAL REPORT**

**JANUARY 01, 2007 THRU DECEMBER 31, 2007**

**Issued January 09, 2008**

### **TABLE OF CONTENTS**

- **Summary of Major Achievements**
- **County Highway Department Services**
  - **General Function, Personnel, Engineering & Inspection, Maintenance**
- **Road & Bridge Committee Services**
  - **Function, Voting Members**
- **County Highway Department Funding**
  - **Annual Local & State Funding, State & Federal Controlled Funding, Miscellaneous Funding;**
- **Photos of Road & Bridge Capital Improvements**
- **Photos of Maintenance Program**

## COUNTY HIGHWAY DEPARTMENT SERVICES

### SUMMARY 2007 MAJOR ACHIEVEMENTS

- **Replaced eight (8) IDOT/FHWA Listed Shelby County Township Bridges**
  - Four Township Bridges were that had been closed were reopened (Rural, Ridge, Prairie, and Rose Township Bridges)
- **Resurfaced and widened 2 miles of Neoga Road (from Cumberland County line) \$1.3 million**
- **Received Grant for Bridge Replacement in Richland Township located 3miles west of Village of Strasburg for 80% of Construction Costs up to \$188,000**
- **Special County Highway Maintenance Projects:**
  - Made 2000 tons of cold-mix at Shelby County Highway Department Yard
  - Corrected surface and crown on Oconee to Nokomis County Highway
- **Partnered with Legislators and the Farm Bureau to work toward obtaining additional funding**
  - Worked with State Representative Flider to co-author House Bill 1963 to double the amount of statewide Township Bridge Funding (from \$15 million to \$30 million).
  - Provided testimony at the State Capitol on Bridge funding needs with the Farm Bureau

**GENERAL FUNCTION:**

The Shelby County Highway Department is dedicated to providing a high quality public service while performing the functions needed for the betterment of the Shelby County Highway System. The Shelby County Highway Department is directly responsible for the maintenance and capital improvements associated with 197.80 county roadway miles (Note: 27<sup>th</sup> out of 102 counties) and 59 County Highway bridges.

The Shelby County Highway Department, subject to the general supervision and approval of the county board and to the rules and regulations of the Illinois Department of Transportation, generally performs the following functions (ref. 605 ILCS 5/5 Division 2):

- Prepare or cause to be prepared all Plans, Specifications, and Estimates for all Capital Improvement Road & Bridge Projects, approved by the county board.
- Supervise the construction and maintenance of any public road or bridge constructed or maintained in whole or in part at the expense of the county.
- Generate and administer the Shelby County Highway Department Budget, approved by the county board.
- Provide technical and administrative assistance to township Highway Commissioners with regard to approximately 275 township bridges (Note 6<sup>th</sup> out of 102 Counties)
- Provide technical advice, and construction & maintenance support for township highway commissioners and municipalities, when requested and/or based on approved petitions
- Provide technical and administrative support for the Highway Commissioner's yearly Township Motor Fuel Tax Program (\$2.0 million annual program)



**SHELBY COUNTY HIGHWAY DEPARTMENT PERSONNEL:**

The Personnel employed by Shelby County to perform the above functions are:

**County Engineer:** Alan Spesard, P.E.

**\* Chief Engineer Assistant:** Keith Petard

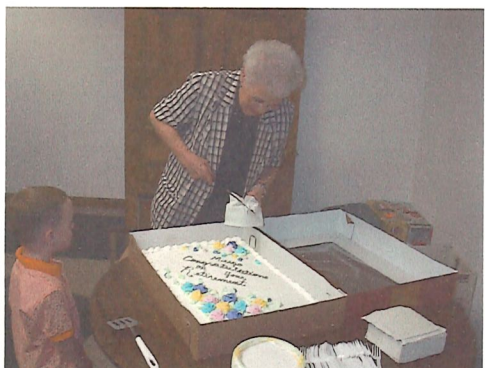
**\* Engineer Assistants:** Scott Short  
Mike Lorton (1) Open Position (Retirement in 12/2004)

**Secretary/Bookkeeper:** Danielle Culberson

**\*\*Foreman:** Marvin Hapner

**\*\*Laborers:** John Agney Charles Evans  
Roger Haycraft Bob Helton  
Doug Martin Marty Reider  
Kenneth Vail (1) Open Position (Retirements in 11/2004)

**\*\* CDL Require \* College Degree Required**



**Marge Kearney (Retirement in 08/2007)**

**ENGINEERING and INSPECTION SERVICES:**

- **Capital Improvement Resident Engineering activities for 10 construction projects**
  - 2 miles of Neoga road resurfacing Project
  - (2) Ridge Township Bridge Replacements
  - Rural township Bridge replacement (near Dollville)
  - Rose Township Bridge Replacement
  - Lakewood Township Bridge Replacements
  - Prairie Township Bridge Replacement
  - Started Richland Township Bridge Replacement (Open to Traffic)
  - City of Shelbyville Bike Path construction oversight
  - Started Clarksburg County Bridge Replacement (Closed to traffic)
  
- **Capital Improvement survey, layout, and design activities for engineering projects**
  - Completed Prairie Township Bridge Design
  - Completed Herrick/51 Bridge replacement design
  - Completed design of Nokomis/Oconee Road maintenance improvement
  - Completed design of Bridge Replacement with pipe culverts in Tower Hill & townships and for the City of Windsor, Rose and Ash Grove/Big Spring
  
- **Miscellaneous Engineering and Inspection Services**
  - Evaluation and Field Inspection of approximately 160 Bridges over western portion of County
  - Township Motor Fuel Tax Budget, Bid Document Preparation and Contract Administration for all 24 Townships (over \$2 million in budgeted maintenance work)
  - County Motor Fuel Tax Budget, Bid Document Preparation, and Contract Administration
  - County and Township Culvert procurement administration
  - Sizing of Culverts for approved Municipal & Township 50/50 petitions
  - Sizing of Culverts for County Highway Drainage Replacement projects
  - Ongoing Technical Review, design and Administration of approx. 30 Bridges approved for replacement
  - Hosted 2 educational conferences for Highway Commissioners and Municipal Street Department Heads (approximately 100 in attendance)
  - Technical document preparation for Right-Of-Way Parcels for township bridges and aid in acquisition negotiations
  - Evaluation of Future Road & Bridge Projects

## **MAINTENANCE SERVICES**

- **Maintenance of 198 miles of County Highways and 59 County Bridges**
  - **Maintenance to Highway Surfaces and Shoulders:**
    - Stockpiled and Spread rock for oil/chip seal coating of approximately 35 miles of County Highways.
    - Performed leveling overlay with cold-mix patch mix to over 20 miles of County Highways.
    - Applied Centerline Striping to 46 miles of County Highways: Tower Hill to Moweaqua Road; Findlay-Bruce Road; Findlay-Assumption Road; Lakewood Road; Neoga Road; Clarksburg Blacktop; Henton Road.
    - Made 2000 ton of cold-mix at County Yard.
    - Performed shoulder repair with the “Tiger-Claw Retriever” along all County Highways and provided shoulder rock and patch-mix repairs as needed
    - Performed Crack Sealing to Bruce-Findlay County Road; Findlay-Assumption County road; Village of Findlay Street;
    - Performed Snow Removal and Cinder Treatment to 198 miles of roadway
  - **Maintenance to Bridges, Culverts, and Ditches:**
    - Installed 6 Drainage Repair Projects at 50% cost share for Municipalities & Townships: Todds Point Township, Tower Hill Township, Village of Strasburg, Big Spring/Ash Grove; Village of Windsor; Rose Township
    - Replaced cross-road County Highway culverts: Lakewood Road; Clarksburg Blacktop; Oklahoma Road; Herrick/51 road
    - Ditch Cleaning, Mowing, Weed/brush spraying/removal on most County Highways.
    - Bridge repair of 8 ton posted Bridge in Prairie Township.

**MAINTENANCE SERVICES (continued)**

- **Maintenance of Traffic Control Rural Reference Signs**
  - Replace or repaired several hundred rural reference and traffic control signs;
- **Miscellaneous Maintenance Tasks:**
  - Provided in-house maintenance and repair to 24 County Highway owned vehicles and equipment.
  - Stockpiled Cinders for snow and ice control
  - Layout and implementation of dog burial program for Animal Control Department in accordance with state regulations
  - Installed numerous field culvert entrances
  - Patching damaged Highway surface areas/holes
  - Delivered Pipe Culverts to 19 Townships and provided culverts for 7 villages (including Cowden, Herrick, Shelbyville, Stewardson, Windsor, Strasburg, Tower Hill)
  - Performed trash bag pickup and disposal along County Highways in support of Probation Department
  - Helped with Courthouse sidewalk removal
  - Disposed of approved Courthouse records and documents
  - Snow Plowed the Airport runways and driveway



## **ROAD & BRIDGE COMMITTEE**

### **FUNCTION:**

The R&B Committee meets a minimum of two times a month. The “Road Trip Committee Meeting” involves site visits across the county to view proposed county road and bridge construction, proposed township & municipality petition work, ongoing construction projects, and maintenance and insurance work. The “Claim Review Meeting” involves a review of county and township claims for compliance with that budgeted and a review of proposed petitions, resolutions and agreements. Occasionally the R&B committee have “Random Committee Meetings” in order to observe local lettings for bridges, roads, and maintenance contracts; review land acquisition document and appraisals for construction projects, and observe county hosted township highway commissioner educational conferences and/or other information meetings.

### **ROAD & BRIDGE COMMITTEE VOTING MEMBERS:**

The 2007 Road & Bridge (R&B) Committee consisted of four county board members appointed by the county board chairman:

Chairman: Roger Pauley, District No. 4

Committee Members: Rob Behl, District No. 7  
Larry Lenz, District No. 9  
Ralph May, District No. 2



**Road & Bridge Committee**

### **KEY DECISIONS OF R&B COMMITTEE:**

- Refine Process of Prioritizing Bridges to be Replaced:
  - Top priority given to “Closed” bridges with significant traffic counts and all weather road surfaces to accommodate local agricultural and school bus traffic and urgent structural need;
  - Selected 4 bridges to begin engineering: Ash Grove Township Bridge, (2) Cold Spring Township Bridges, and one in Rose Township
  - Aggressively evaluated the replacement of bridges with pipe culverts.

## **COUNTY HIGHWAY DEPARTMENT FUNDING**

### **ANNUAL LOCAL TAX & STATE MFT FUNDING**

Shelby County receives local property tax funds and State motor fuel tax (MFT) funds. These funds are considered "Special Revenue Funds" due to the fact that they are legally restricted for expenditures for use by the Shelby County Highway Department for the construction and maintenance of Highways. The local tax revenues and expenditures are internally controlled by the County Bridge, County Highway, and Federal Aid Secondary accounts. The state motor fuel tax revenues and expenditures are internally controlled by the County Motor Fuel Tax and Township Motor Fuel Tax accounts. The expenditures and revenues associated with these funds are audited annually by the Shelby County contracted auditing firm of "Mose, Yockey, Brown & Kull, LLC (MY&K)". In addition to the audit performed by MY&K, the State & Township MFT expenditures and revenues are audited annually by the Illinois Department of Transportation.

- There was a reduction of local property tax revenues.
- Payoff debt to Holland Power Plant

Details associated with these revenues and expenditures for the current Fiscal Year ending in August 31, 2007 will be published by MY&K in a report entitled "AUDITED FINANCIAL STATEMENTS AND SUPPLEMENTAL INFORMATION" in the spring of 2008.

### **STATE & FEDERAL CONTROLLED FUNDING**

The IDOT committed State and Federal Funding for Shelby County Capital Improvement Projects as follows:

Total Federal, State and local Funds for Bridge & Road Projects = \$3,729,122

- Federal Bridge Replacement & Rehabilitation Funds totaling approximately \$2,254,250 toward 80 % of the awarded contract construction and engineering costs for township bridges.
- State Township Bridge Funds totaling approximately \$211,658 toward the awarded contract construction & construction engineering costs for township bridges construction
- Grant Funds totaling up to \$188,000 toward 80% of the construction of bridge in Richland Township

These funds are administered and controlled by the IDOT.

### MISCELLANEOUS FUNDING

The Shelby County Highway Department miscellaneous funding as follows:

- Engineering fees from the \$2.0 million Township Motor Fuel Tax Program, totaling approximately \$85,000 for technical and contract administration services
- Material Donations from Brush Creek Quarry in the amount of \$14,000
- Reimbursement for Resident Engineering expenses for approved requests from the City of Shelbyville
- Maintenance expense reimbursement totaling approximately \$50,000 for approved requests and petitions from townships and villages.
- Grant for Dollville Bridge in amount of \$40,000 was approved (by Rep. Flider)
- Grant from IDOT for 80% of Bridge Replacement costs located in Richland Township (up to \$188,000)

### Worked with Legislators to obtain additional Funding:

- Worked with Representative Flider to co-author House Bill 1963 to double the amount of statewide Township Bridge Funding (from \$15 million to \$30 million).
- Provided testimony at the State Capitol on Bridge funding needs with the Farm Bureau
- Testified at Public Hearing hosted by Rep. Flider, Rep. Mitchell, and Sen. Watson on need for a Capital improvement Bill.
- Communicated with Representative Stephens, Flider, Eddy, and Senators Righter and Watson concerning funding issues and bridge grants



**Rep. Bob Flider , Alan Spesard, and the Farm Bureau present Testimony to House of Representatives' Transportation Committee to justify legislation increasing bridge funding**



## ROAD & BRIDGE CAPITAL IMPROVEMENTS



Old Surface



Road Widening



Resurfacing Pavement



Final Road Surface

### NEOGA COUNTY HIGHWAY IMPROVEMENT PROJECT

- Location: East of Trowbridge; 2 mile length of road
- Construction Cost: Awarded to Howell Paving Const. for \$1,289,739
- Construction Funding: 80% Federal; 20% State
- Current Status: Final IDOT inspection on August 29, 2007 Open to Traffic



## ROAD & BRIDGE CAPITAL IMPROVEMENTS



Old Bridge (Closed)



New Bridge

### RURAL TOWNSHIP BRIDGE

- Location: 1 mile north of Village of Dollville
- Construction Cost: Awarded to Falbe Construction for \$156,968
- Construction Funding: 80% Federal; **\$40,000 Grant from Rep. Flider**
- Current Status: Final IDOT inspection on May 17, 2007 Open to Traffic



Old 5 Ton Posted Bridge



New Bridge

### RICHLAND TOWNSHIP BRIDGE

- Location: 3 miles west of Village of Stasburg
- Construction Cost: Awarded to Perry County Construction for \$185,131
- Construction Funding: **80% Grant State funding**; 20% local funds
- Current Status: IDOT Final Inspection in Spring 2008; Open to Traffic



## ROAD & BRIDGE CAPITAL IMPROVEMENTS



Old 5 Ton Posted Bridge



New Bridge

### LAKWOOD TOWNSHIP BRIDGE

- Location: 1.5 miles south of Village of Lakewood
- Construction Cost: Awarded to Schmidt Construction for \$194,702
- Construction Funding: 80% Federal; 16% State; 2% Township; 2% County
- Current Status: IDOT Final Inspection on Nov. 08, 2007; Open to Traffic



Old Closed Bridge



New Bridge

### PRAIRIE TOWNSHIP BRIDGE

- Location: 3 miles northwest of Village of Stewardson
- Construction Cost: Awarded to Perry County Construction for \$165,511
- Construction Funding: 80% Federal; 16% State; 2% Township; 2% County
- Current Status: Final Inspection by IDOT on October 24, 2007; Open to Traffic



## ROAD & BRIDGE CAPITAL IMPROVEMENTS



Bridge Inspection (Closed Bridge)



New Bridge

### RIDGE TOWNSHIP BRIDGE

- Location: 3 miles southwest of Village of Westervelt
- Construction Cost: Awarded to R.L. Brink Construction for \$439,057.50
- Construction Funding: 80% Federal; 16% State; 2% Township; 2% County
- Current Status: IDOT Final Inspection July 18, 2007; Open to Traffic



Old Bridge (Closed)



New Bridge

### ROSE TOWNSHIP BRIDGE

- Location: 4 miles west of City of Shelbyville
- Construction Cost: Awarded to R. L. Brink Construction for \$295,516
- Construction Funding: 80% Federal; 16% State; 2% Township; 2% County
- Current Status: IDOT Final Inspection on Sept. 07, 2007; open to traffic

## ROAD & BRIDGE CAPITAL IMPROVEMENTS



Old Bridge (15 Ton)



Bridge Under Construction

### CLARKSBURG COUNTY HIGHWAY BRIDGE

- Location: 3 miles southwest of Village of Strasburg
- Construction Cost: Awarded to A. J. Walker Construction for \$643,087.59
- Construction Funding: 100% Federal;
- Current Status: Under Construction: Closed to Traffic



Old Bridge (6 Ton) Under Construction



New Pipes

### TOWER HILL TOWNSHIP BRIDGE

- Location: 1 mile south of Village of Tower Hill
- Cost of Construction: \$22,178.21
- Construction: by County Highway and Township; 50% Township 50% County
- Current Status: Open to Traffic



## ROAD & BRIDGE CAPITAL IMPROVEMENTS



Repair of Deteriorated Cap

New Cap

### Prairie Township Bridge Cap Repair



Soil Boring at Major Bridge (near Mode) along County Highway



## MAINTENANCE OF COUNTY HIGHWAYS



**Lakewood County Highway Pipe Replacement**



**Repairing Shoulders along Cowden-Herrick County Highway**



**Brush Removal and Ditch Cleaning along Findlay County Highway**



### MAINTENANCE OF COUNTY HIGHWAYS



Old Surface



New Patched Surface

#### Patch Deteriorated Surface along Neoga Road



Old Surface



Tilling Old Surface



Compacting Surface



Final Road Surface

#### Nokomis County Highway Crown and Surface Repair



## MAINTENANCE OF COUNTY HIGHWAYS



**Crack Sealing the Bruce-Findlay County Highway**



Clarksburg Blacktop



Stewardson Road

**Seal Coating County Highways**



## MAINTENANCE OF COUNTY HIGHWAYS



Mowing County Highways (“The Mode Road”)



Cold Mix Production at County Highway Department



**AID TO TOWNSHIPS AND MUNICIPALITIES**



Old Structure



New Pipe

**Drainage Structure Replacement in Rose Township**



Old 3 ton Posted Structure



New Pipe Culverts

**Drainage Structure Replacement on Big Spring/Ash Grove Township Line**



## AID TO TOWNSHIPS AND MUNICIPALITIES



Old Pipe Culverts



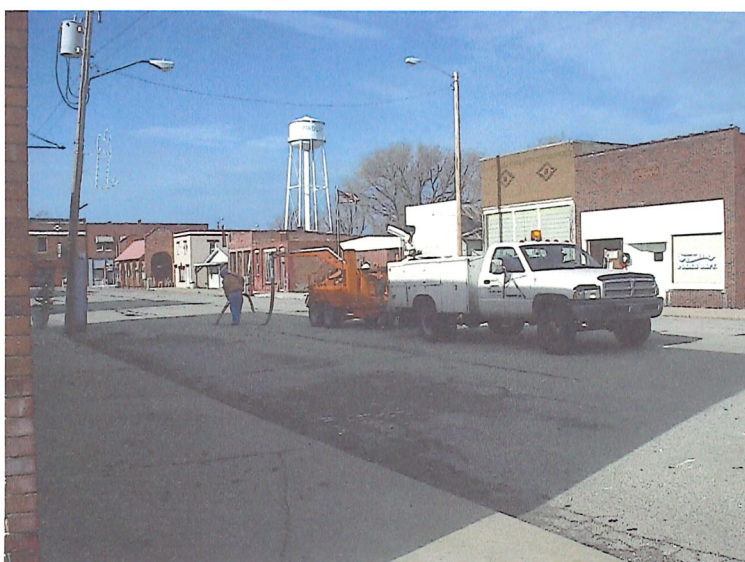
New Pipe Culverts

### Drainage Culvert Replacement in Todds Point Township



### Township, Municipal and County Culvert Deliveries

**AID TO TOWNSHIPS AND MUNICIPALITIES**



**Crack Sealing Road for Village of Findlay**



Old Structure



New Pipe

**Drainage Structure Replacement for Village of Strasburg**



## AID TO TOWNSHIPS AND MUNICIPALITIES



Existing Box Culvert

New Pipe

### Drainage Structure Replacement for City of Windsor



### Installation of Traffic Controls for Tower Hill School

## MISCELLANEOUS PROJECTS



**Courthouse Sidewalk Removal**

**SHELBY COUNTY BOARD MEETING  
ZONING INFORMATION**

**January 9, 2008**

The following are the documents that are germane to Shelby County Zoning, and should be helpful to consider during the County Board meeting.

- Zoning Administration Monthly Report.
- Special Exception to Zoning Ordinance for Home-Based Business, Ms. Bonita Blakey, "Clipper Box". Approved by Zoning Board of Appeals. Does not require County Board approval.
- Rezoning Petition by Mr. Bruce Steinke to rezone Weaver Dale Subdivision from Residential to General Business to establish spring, summer, and fall rental cottages. Parcel Numbers (2409-30-04-302-002, 2409-30-04-302-003, 2409-30-04-302-004, 2409-30-04-302-005, 2409-30-04-302-006, 2409-30-04-302-007, 2409-30-04-302-009, 2409-30-04-302-010) from Residential to General Business to establish vacation rental properties.

THIS ACTION WAS NOT RECOMMENDED FOR APPROVAL  
BY THE PLANNING COMMISSION, ONLY ZONING BOARD  
OF APPEALS RECOMMENDED APPROVAL.

If you have questions or comments, please ask.

Very Respectfully,  
Chuck Stanley

BUILDING PERMITS ISSUED - DECEMBER 2007

<u>Date</u>	<u>Name</u>	<u>Parcel Number</u>	<u>Township</u>	<u>Type Structure</u>	<u>Fee</u>
07-306	12/3/2007 Hampton, James	1812-14-00-100-006	Rose	Access Bldg	NC
07-307	12/4/2007 Furr, Terry	1812-02-00-300-003	Rose	Access Bldg	NC
07-308	12/17/2007 Wallace, Rick	0221-06-00-400-008	Big Spring	Access Bldg	NC



**Zoning Administration  
Monthly Report  
2007**

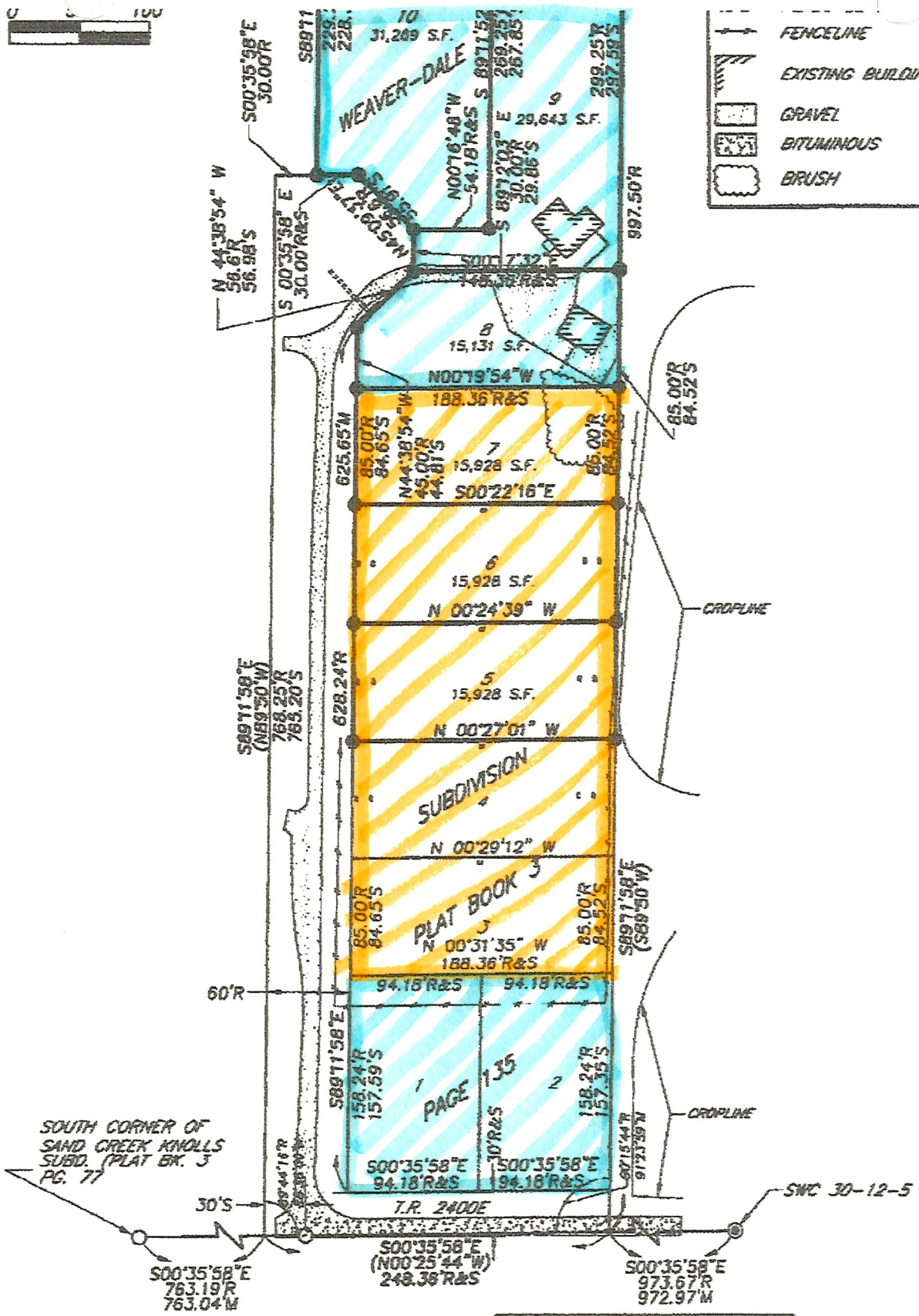
	January	February	March	April	May	June	July	August	September	October	November	December	Year Total
<b>Building Permits</b>													
Residence (Mobile, Modular, and Constructed)	4	2	5	9	10	5	4	9	4	8	2	0	62
Additions to Residence	0	0	0	1	0	0	1	0	0	0	1	0	3
Accessory Buildings	2	9	8	11	9	7	9	6	8	15	8	3	95
Grain Bins	0	0	0	0	0	0	0	0	0	0	0	0	0
Commercial	0	0	0	0	1	0	0	0	0	0	0	0	1
<b>Zoning Applications</b>													
Rezoning	1	1	0	0	0	2	2	1	0	0	0	0	7
Special Exceptions	0	0	0	0	0	0	0	0	0	0	2	0	2
Variances	0	0	0	0	0	0	0	0	0	0	0	0	0
Sub Divisions													
Preliminary Plat	1	0	0	0	0	0	0	0	0	0	0	0	1
Final Plat	0	0	1	0	0	0	0	0	1	0	0	0	2
<b>Fees Received</b>													
Last Year	\$ 375.00	\$2,575.00	\$2,195.00	\$1,650.00	\$3,015.00	\$3,140.00	\$1,325.00	\$1,600.00	\$ 2,275.00	\$ 2,054.00	\$ 825.00	\$ 525.00	\$18,604.00
	\$ 1,950.00	\$1,100.00	\$1,700.00	\$2,165.00	\$2,900.00	\$1,620.00	\$2,375.00	\$1,750.00	\$ 1,105.05	\$ 1,715.00	\$ 1,110.00	\$ -	\$19,490.05



①

**LEGEND**

- FENCELINE
- EXISTING BUILDINGS
- GRAVEL
- BITUMINOUS
- BRUSH



**OKAW VALLEY LAND SURVEYING, L.L.C.**

R.R. 3 BOX 358H  
(217) 797-5555

SULLMAN, ILLINOIS 61851  
FAX (217) 797-5556

DESIGN FIRM LIC. # 184-004388 (EXPIRES 4-30-07)



FB #13-CLIENT: B. STEINKE			
DRWG BY: TJH	CHK'D BY: MW	PROJ. NO: 098-0603	SHEET NO: 2
CAD DWG.		DATE: 02/07/06	OF 2
098-0603.DWG			

EXISTING

PROPOSED

December 19, 2007

Attention: Shelby County Zoning Commission  
Re: Weaver-Dale Subdivision Re-zoning

To Whom It May Concern,

We, Christopher and Pamela White of RR 1 Box 59, Windsor, IL. Are **completely against** the re-zoning of the Weaver-Dale Subdivision from Rural Residential to General Business or anything other than Rural Residential.

We purchased our Windsor home 4 years ago to get away from the traffic and noise of in-town living. We have put enormous effort and substantial monetary amount into making this our dream home where we can live Peacefully now and throughout our retirement.

We believe that re-zoning the Weaver-Dale Subdivision will not only ruin the peacefulness of our area, but will **INCREASE** traffic, litter and the potential for crime/vandalism. We also believe after talking to different real estate brokers that this will **DECREASE** our property value, contrary to the letter we received from Mr. Steinke's attorneys stating the very opposite.

This kind of re-zoning will also disrupt the nature and wildlife of this area along with a **negative** environmental impact of the Army Corp of Engineers' property.

We have spoken with all of our neighbors and believe that we all as a rural community are **COMPLETELY AGAINST** the re-zoning of the Weaver-Dale Subdivision.

Sincerely,

Christopher White  
Pamela White

DEC 18 2007 07:14 PM

TU 912172332802

F 11/17/07

December 17, 2007

Attention: Shelby County Zoning Division  
Re: Weaver Dale Subdivision Re-zoning

To Whom It May Concern:

We, Paul and Eileen Picman of RR 1 Box 58E, Windsor, IL, are highly against the re-zoning of the Weaver Dale Subdivision from Residential/Agricultural to a Commercial Zoning. We purchased our Windsor home about two years ago as place we use to relax on the weekends and vacation with our family, with plans of it becoming a place we retire. If we allow for the re-zoning of this area, located directly down the street from our home, we give up the peacefulness that we want. A commercial area will bring an extensive amount of traffic and noise to this quiet, peaceful neighborhood. We purposely bought in rural Illinois to enjoy these benefits that are about to be taken away with the re-zoning. The re-zoning will also disrupt the nature and the wildlife of this area along with a negative environmental impact of the Army Corp of Engineers' property. My intent of purchasing this property was to retire in rural America, not in a business district. If I wanted to be in a business district, with heavy traffic and noise, I simply could have retired in my Chicago home. My family and I have become very passionate of the Windsor community and do not want to see any changes that might disrupt this wonderful town.

Sincerely,



Paul Picman  
Eileen Picman

Concerned Home owner

Re: Commercial development in nearby area.

To Whom It May Concern:

As a concerned home owner of a property at RR.1 Box 59 C. We would have great issue with commercializing an area that our family and surrounding families go for a weekend retreat or to live. The housing in our area currently is priced higher do to the quiet setting that would now be disrupted by outside weekend renters. The traffic would be increase so that it wouldn't be as safe to let our kids ride their bikes to the neighbors and so on. We feel that the gain profit wise of one individual should not hinder the rest of the small community of people in this area. Lake Shelbyville prides itself in being a rustic out of the way lake that attracts many people. We believe that is great but, there are already plenty of areas to support the flow of visitors. In the small housing development we have all of the land owners have a stake in keeping our properties clean and neat. If we allow commercializing the area then we run a good chance of having people who don't care like we do.

Sincerely,

Chad A. Warner

Stephanie Warner

December 20, 2007

To Whom It May Concern,

Our names are Ed and Nancy Fazzdior we have a home at RR 1 Box 59a, Windsor, Illinois 61957 just down the road from Mr. Steinke.. This letter is in reference to Mr. Steinkes' interest in rezoning the property known as Weaver-Dale subdivision. We are adamantly opposed to Mr. Steinkes' proposal of building cabins for rental, as it will change the rural setting that is one of peace and quite which is why we purchased our home in that location. We believe that the zoning should not be changed to accommodate Mr. Steinkes' wish for developing the property or any other properties he has acquired in the area.

The road is a small rural road and is not built to hold up under the increased traffic that this property will produce and will adversely affect the road along with the small bridge that is in poor condition to begin with. Because the people that will be staying in the cabins do not have a vested interest in the area there will be the noise, trash traffic and pollution that comes with the business that we as neighbors do not welcome as we purchased our properties for the peace and quite of the rural settings not to deal with the people that will be impacting our lives in a negative way. Before any zoning changes are made that a indept study of what he wants to do needs to be done to find out if these will adversely effect the area. There are many unsold homes already on the market and a huge increase on for closers and we certainly don't need any more unsold homes in the area that are sitting empty

Respectfully,

Ed and Nancy Fazzdior

**Resolution Number:** 2008-03

**Applicant:** Bruce Steinke

**Whereas,** petition to rezone property by Mr. Bruce Steinke, Parcel Numbers (2409-30-04-302-002, 2409-30-04-302-003, 2409-30-04-302-004, 2409-30-04-302-005, 2409-30-04-302-006, 2409-30-04-302-007, 2409-30-04-302-009, 2409-30-04-302-010) Shelby County, Illinois, from Residential to General Business to establish vacation rental properties. Total of 10 acres. Weaver-Dale Subdivision.

NOT Recommended for approval by the Shelby County Planning Commission, BUT was recommended by the Zoning Board of Appeals.

**Whereas,** hearings with respect to this Rezoning request concerning the said real estate have been held before the Shelby County Planning Commission and the Zoning Board of Appeals;

**NOW, THEREFORE, BE IT HEREBY RESOLVED** by the County Board of Shelby County assembled this 9<sup>th</sup> day of January, 2008, that the rezoning request for the said real estate be approved.

**BE IT FURTHER RESOLVED** that the Zoning Administrator be, and he is, hereby directed to issue Notice of Rezoning Approval to the petitioner and owner of the said real estate.

Duly adopted and approved this 9<sup>th</sup> day of January, 2008.

  
George Frazier, Chairman  
Shelby County Board

ATTEST:

  
Kathy Lantz, Shelby County Clerk

Shelby County Treasurer  
 Monthly Report of Investments  
 As of: January 1, 2008

Bank Balance: \$11,419,697.47

Passbooks, Money Markets,  
& Certificates of Deposits

Checking & Cash

\$ 612,678.08	MMD		
\$ 1,513,100.15	MMD	General Fund	\$ 2,000.00
\$ -			
\$ -		County Payroll Clearing	\$ 18,166.32
\$ -			
\$ -		Section 105 Claims	\$ 1,000.00
\$ -			
\$ 322,233.98	PB	County Health Fund	\$ -
\$ 114,054.46	CD		
\$ 11,990.95	MMD	County Health-TB	\$ -
\$ -			
\$ 36,079.77	MMD	Animal Control Fund	\$ 35,325.18
\$ 22,460.14	MMD		
\$ 84,625.14	PB	Ambulance Fund	\$ -
\$ 145,990.76	MMD		
\$ 797,692.54	MMD	Mental Health Fund	\$ -
\$ -			
\$ 337,323.66	PB	IMRF Fund	\$ -
\$ -			
\$ 186,575.07	PB	Social Security Fund	\$ -
\$ 54,198.15	CD & MMD		
\$ 14,194.67	PB	Indemnity Fund	\$ -
\$ -			
\$ 6,854.52	PB	Court Security Fund	\$ -
\$ -			
\$ 208,305.24	MMD	County Bridge Fund	\$ -
\$ -			
\$ 68,075.48	PB	County Highway Fund	\$ -
\$ -			
\$ 158,234.56	MMD	FASM Fund	\$ -
\$ -			
\$ 476,243.38	MMD	County Motor Fuel Tax Fund	\$ -
\$ -			
\$ 11,444.54	PB	Tourism Fund	\$ -
\$ 93,238.73	CD & MMD		
\$ 33,930.04	PB	Probation Fund	\$ -
\$ 55,214.22	CD & MMD		
\$ 69,182.83	PB	Assist Court Fund	\$ -
\$ -			
\$ 837.69	PB	Law Library Fund	\$ -
\$ -			
\$ 85,791.95	PB	Automation Fund	\$ -
\$ -			
\$ 53,096.51	PB	Recording Fund	\$ -
\$ -			
\$ 9,493.57	PB	Drug Traffic Fund	\$ -
\$ -			
\$ -		Airport Fund	\$ 14,501.49
\$ 237,300.62	CD & MMD		
\$ 314,048.09	MMD	Home Nursing Fund	\$ -
\$ -			
\$ -		W.I.C. Fund	\$ 23,127.94
\$ -			
\$ 169,468.60	MMD	Local Bridge Fund	\$ -
\$ -			
\$ -		Township Bridge Fund	\$ 16,984.38
\$ -			
\$ -		Township Construction Fund	\$ 714.05
\$ -			



\$	280,751.56	MMD		
\$	721,672.12	MMD	Township Motor Fuel Tax	\$ -
\$	-			
\$	1,104.17	PB	Estate Tax Fund	\$ -
\$	-			
\$	60,957.13	PB	Minor Unknown Heirs Fund	\$ -
\$	-			
\$	8,562.83	PB	Probation Drug Testing	\$ -
\$	178.82	MMD	Carriage Park Fund	\$ -
\$	41,282.13	MMD		
\$	182,481.76	PB	Drainage Fund	\$ 3,444.80
\$	-			
\$	64,984.32	PB	Document Storage Fund	\$ -
\$	78,610.41	MMD		
\$	78,440.43	PB	Misc County Health Fund	\$ -
\$	26,462.53	MMD		
\$	43,527.21	PB	Litigation Fund	\$ -
\$	204,289.61	CD		
\$	100,758.63	PB	Revolving Loan Fund	\$ -
\$	-			
\$	10,663.63	PB	Victim Impact Panel Fund	\$ -
\$	-			
\$	842.78	PB	States Attorney Forf Fund	\$ -
\$	-			
\$	612.49	MMD	Findlay Road Project Fund	\$ -
\$	-			
\$	14,968.30	PB	Rescue Squad Fund	\$ -
\$	-			
\$	304.93	MMD	Garden Acres Road Fund	\$ -
\$	-			
\$	12,997.38	PB	DUI Equipment Fund	\$ -
\$	-			
\$	1,835.84	PB	GIS Fund	\$ -
\$	1,054,966.72	CD		
\$	479,504.82	PB	Capital Improvement Fund	\$ 520,404.68
\$	-			
\$	-		County Health Petty Cash	\$ 135.64
\$	-			
\$	-		Probation Petty Cash	\$ 50.00
\$	-			
\$	-		County Treasurer Cash	\$ 5,000.00
\$	-			
				\$ 10,415,573.12

County Collector Accounts

Shelby County State Bank-Checking	\$ 26,468.00
First Trust Bank-Checking	\$ 20,723.26
National Bank at Pana	\$ 214.04
First National Bank of Assumption	\$ 147.55
Community Banks of Shelby County-Cowden	\$ 100.20
Shelby County State Bank-Strasburg	\$ 475.70
First Federal Savings & Loan-Shelbyville	\$ 367.84
First Trust Bank-Real Estate Tax Trust Account	\$ 7,040.53
Shelby County State Bank-Shelbyville-Money Market	\$ 424,522.95
First Trust Bank-Money Market	\$ 489,927.24
Ayars State Bank-Moweaqua	\$ 12,657.64
Shelby County State Bank-Findlay	\$ 18,592.77
First National Bank of Pana	\$ 854.50
Peoples Bank of Pana	\$ 167.83
Stewardson National Bank	\$ 514.36
Shelby County State Bank-Windsor Branch	\$ 596.73
Dewitt Federal Savings & Loan-Moweaqua	\$ 208.76
Sigel Community Bank	\$ 544.45
	\$ 1,004,124.35

CERTIFICATE OF DEPOSITS  
January 1, 2008

General Fund(001) Community Banks of Shelby County-MMD# 390	
2.02% Interest	<u>\$ 612,678.08</u>
Animal Control Fund(003) Community Banks of Shelby County-MMD# 390	
2.02% Interest	<u>\$ 36,079.77</u>
Ambulance Fund(004) Community Banks of Shelby County-MMD# 390	
2.02% Interest	<u>\$ 22,460.14</u>
Mental Health Fund(005) Community Banks of Shelby County-MMD# 390	
2.02% Interest	<u>\$ 145,990.76</u>
Indemnity Fund(008) Community Banks of Shelby County-MMD# 390	
2.02% Interest	<u>\$ 9,198.15</u>
Probation Fund(016) Community Banks of Shelby County-MMD# 390	
2.02% Interest	<u>\$ 93,238.73</u>
Assist Court(017) Community Banks of Shelby County-MMD# 390	
2.02% Interest	<u>\$ 214.22</u>
Home Nursing Fund(024) Community Banks of Shelby County-MMD# 390	
2.02% Interest	<u>\$ 112,300.62</u>
Township Motor Fuel Tax Fund(029) Community Banks of Shelby County-MMD# 390	
2.02% Interest	<u>\$ 280,751.56</u>
Miscellaneous County Health Fund(043) Community Banks of Shelby County-MMD# 390	
2.02% Interest	<u>\$ 78,610.41</u>
County Health Fund-TB(002) Ayars State Bank-CD# 3162 Matures 02/03/2008 4.25% Interest	<u>\$ 114,054.46</u>

CERTIFICATE OF DEPOSITS  
January 1, 2008

Indemnity Fund(008) Shelby County State Bank-CD# 14065 Matures 02/15/2008 4.0% Interest	\$ <u>45,000.00</u>
Assist Court Fund(017) Shelby County State Bank-CD# 14794 Matures 04/22/2008 4.94% Interest	\$ <u>55,000.00</u>
Home Nursing Fund(024) Prairie National Bank-CD# 14288 Matures 02/21/2008 3.75% Interest	\$ <u>125,000.00</u>
Revolving Loan Fund(045) Community Banks of Shelby County-MMD# 720151  .65% Interest	\$ <u>204,289.61</u>
Capital Improvement(054) First Federal Savings & Loan-CD# 20555 Matures 10/17/2008 5.15% Interest	\$ <u>1,054,966.72</u>
TOTAL	\$ <u>2,989,833.23</u>