

January 8, 2021

SHELBY COUNTY BOARD MEETING AGENDA

January 14, 2021 – 7:00 P. M.

Lion's Club in Forest Park Shelbyville

1. Call to Order- Prayer - Pledge of Allegiance
2. Roll Call
3. Approval of Minutes from 12/7/2020 Organizational meeting and the 12/9/2020 regular meeting
4. Public Body Comment
5. Bobby Orman, Chairman – Request approval of changes to the order of business(#4 rising to speak, if able; #14 formation of Executive Committee; #18 remove Clerk to read rules before every board meeting, #21 budget to be passed by majority of board present, amendments by 2/3's)
6. Bobby Orman, Chairman – Designate the Shelby County Treasurer as PCOM for Shelby County and Central Illinois Public Transportation
7. Brad Phegley, Coroner – Request approval to purchase a vehicle for the Coroner's office
8. Undersheriff Sean McQueen – Update on the CURES Funding Grant
9. John Pogue – Discussion regarding those County offices requiring regular purchase of fuel(excluding the Highway Department) to apply for and use the WEX fuel card
10. Gary Patterson, LEC Chairman – Request to approve and award low bid for fuel for Sheriff and other County Departments in tank housed at the County Highway Department
11. Jeff Slifer – Request the board approval a temporary moratorium on any Wind Farm Ordinance and/or Wind Farm Permits
12. Erica Firnhaber, County Treasurer – Revenue/Expense report
13. County Highway Engineer Alan Spesard – Highway Engineer's Report - Approval for the following: Engineering agreement with Civil Design, Inc. to design box culvert in Prairie township; Resolution to provide matching funds for the Cowden-Herrick Road Upgrade project; Joint agreement with IDOT for funding the Cowden-Herrick Road Upgrade project; Construction Engineering Agreement with Hampton, Lenzini and Renwick to help County Highway Department with the Cowden-Herrick road construction oversite project
14. Committee Reports
15. Chairman Updates
16. Chairman Appointments –Annie Reid – Mental Health “708” Board
Penny Standerfer – Mental Health “708” Board
William Kroncke – Sheriff's Merit Commission
Gary Crowder – Sheriff's Merit Commission
Ramiro Estrada – ETSB 911 Board (Public Safety Appointee)
County Board committee appts. – see attached list
17. Correspondence
18. Terry Metzger, Purchasing Committee – Request approval for the payment of the 2019 Shelby County Farm Taxes
19. Payment of claims
20. Public Body Comment
21. Adjournment

Please silence cell phones prior to start of the Board meeting.

Prayer today is given by board member Rod Hite

SHELBY COUNTY BOARD MEETING

January 14, 2021 – 7:00 P.M.

The Shelby County Board met on Thursday, January 14, 2021 at 7:00 P.M. at the Lion's Club in Forest Park in Shelbyville, Illinois.

Chairman Orman called the meeting to order. Board member Rod Hite gave the prayer, and all present recited the Pledge of Allegiance.

County Clerk Jessica Fox called the roll. Barr, Lenz, and Metzger were absent.

Minutes for the December 7 Organizational meeting were presented for approval. Baker made motion to approve these minutes. Lines seconded said motion, which passed by voice vote (19 yes, 0 no). Minutes for the December 9, 2020 meeting were presented for approval. Patterson made motion to approve the minutes with the correction of the fuel usage by the Sheriff's office to read 2,800 gallons not \$2,800. Tate seconded said motion, which passed by voice vote (19 yes, 0 no).

At this time Chairman Orman called for Public Body Comment.

A question about why the Coroner needed a vehicle was asked and the board was thanked for moving the meetings to the evening.

Orman next presented changes to the Order of Business. A motion to change #4 on the order of business to *every member, before speaking, shall raise his hand and rise from his seat, if able and address himself to the Chair* was made by Mark Bennett and seconded by Pogue. Motion passed by voice vote (16 yes, 3 no – B. Bennett, Swits and Williams).

The next change was for #14, which creates an Executive Committee in place of the Budget Committee, which has never been listed as a standing committee in the Order of Business. *The Executive Committee will be made up of the Chairman, Vice-Chairman and the Chairs of Fees/Salaries, Finance, Purchasing and Legislative Committees.* Discussion was held. Slifer made motion to approve the Executive Committee. Pogue seconded said motion, which passed by voice vote (10 yes, 7 no – B. Bennett, Drnjevic, Durbin, Coffman, Patterson, Swits, Simpson and Williams and 1 present – Lines).

The next change presented was for #18, which removes, *and the rules adopted by the Board shall be publicly read by the Clerk at the beginning of each meeting.* Motion by Baker to approve this change. Seconded by Lines and passed by voice vote (19 yes, 0 no).

The final change to be presented was to #21 which stated the annual budget would be approved by the majority instead of by 2/3's vote. This change was tabled on a motion by Drnjevic and a second by Orman until the statute was reviewed. Motion to table passed by voice vote (19 yes, 0 no). (The statute states the budget must be approved by 2/3's so #21 will remain as passed at the 12/7/2020 meeting).

Next, Chairman Orman made a motion to appoint the County Treasurer as PCOM for CIPT Rural Transportation. This position had previously been handled by the Treasurer's office prior to 2013-2020. Job duties involve the pass through of State and Federal monies, presentation of documents to the board for approval and overseeing rural transportation for 5 other counties. Both Orman and Coffman had recently met with Beth Beck-Marts who oversees the Rural Transportation for CEFS. Shelby County has been without this position since mid-August and Treasurer Firnhaber has tried to handle the duties associated with this position since that time. Motion by Orman to approve the Treasurer to be responsible for PCOM. Baker seconded said motion, which passed by voice vote (19 yes, 0 no).

Coroner Brad Phegley addressed the board about the need for the Coroner's office to have a vehicle to transport bodies from the death scene to Bloomington for autopsies. The County currently pays Lockart-Green funeral home \$500.00 per trip for use of a van for this purpose. Baker made motion to table this item until Phegley has more information for the board. Drnjevic seconded said motion, which passed by voice vote (19 yes, 0 no).

Undersheriff Sean McQueen updated the board regarding CURES grant funding (coronavirus relief) the County applied for to reimburse public safety salaries. The County was awarded \$426,824 in grant funding. Small items purchased by various office heads to provide safety measures were also reimbursed(1300.00). McQueen stated a check for \$404,000 was recently received and the County was waiting on the remainder of the funds received. McQueen was thanked for securing this funding for Shelby County.

At this time, board member John Pogue presented info on the WEX fuel card he recommends the County departments requiring fuel (excluding the Highway Department) to apply for and use the WEX fuel card. Pogue makes motion to approve the WEX card for fueling uses for the various county departments. Slifer seconded said motion, which passed by voice vote (19 yes, 0 no).

Law Enforcement Chair Gary Patterson spoke with the board about the replacement of a 500-gallon fuel tank at the Highway Department with a 1,000-gallon tank for use by both the Highway, Sheriff's office and any other county office which needs to fuel their department vehicle. The low bid on this tank was presented by Equity. The equipment would be provided to the County at no charge and the only expense would be the fuel costs. The terms of this would be for 5 years and the fuel savings looks to be 20 – 30 cents a gallon. Patterson made motion to award the low fuel bid for Equity. A security camera and light will also be installed at the Highway Department by this tank for added security. This expense will be split between the Highway and Sheriff's Department. Baker seconded said motion which passed by voice vote (18 yes, 1 no – Pogue).

Board member Jeff Slifer addressed the board and recommended that due to the vacancy in the Zoning Administrator position, the board approve a temporary moratorium on a Wind Farm Ordinance, or any Wind Farm permits. Discussion was held. Slifer made motion to approve the temporary moratorium. Patterson seconded said motion, which passed by voice vote (18 yes, 1 no – Lines).

Shelby County Board
January 14, 2021

In Treasurer Firnhaber's absence, Chairman Orman presented the Treasurer's report. Canaday made motion to approve the Treasurer's report as presented. Tate seconded said motion, which passed by voice vote (19 yes, 0 no).

At this time, Chairman Orman called for the County Highway Engineer's report.

Alan Spesard, County Highway Engineer, requested approval for 3 agreements and a resolution. (Supportive documents are attached to these minutes).

Spesard presented an Engineering agreement with Civil Designs, Inc. to design a box culvert in Prairie Township, which will be funded with Rebuild Illinois funds. Simpson made motion to approve the agreement. Baker seconded said motion, which passed by voice vote (19 yes, 0 no).

Spesard reported the next 3 items to be presented all deal with the Cowden-Herrick improvement project. This project will be bid on March 5th in Springfield. The agreement is between the contractor and IDOT and involves Federal funds, that is the reason it is bid in Springfield.

As required by IDOT, the first item presented is a funding resolution stating the County has the funds to match the dollars of the project. This project is funded with 80% Federal funds, up to \$200K State funds and the remaining Rebuild Illinois and local funds. B. Bennett made motion to approve the resolution. Tate seconded said motion, which passed by voice vote (19 yes, 0 no).

Spesard next presented a funding agreement with IDOT for this project. The estimated costs are 1.5 million dollars. B. Bennett made motion to approve the agreement. Williams seconded said motion, which passed by voice vote (19 yes, 0 no).

The final agreement was an Engineering agreement with Hampton, Lenzini and Renwick for the Cowden-Herrick improvement project for \$82,000 which will be reimbursed by Rebuild Illinois funds. B. Bennet made motion to approve the agreement. Gergeni seconded said motion. Discussion was held about Spesard serving as oversite engineer, the Highway Department's lack of engineering staff, and whether this item should be put out for bids. After much discussion, Baker made motion to table this agreement. Pogue seconded said motion, which passed by voice vote (13 yes, 5 no - B. Bennett, Swits, Patterson, Williams, and Simpson, 1 present - Coffman).

Spesard next presented the annual report for the Highway Department highlighting the 2020 major achievements. Spesard also updated the board that the Oil and Cold Mix bids will be opened on February 5th. Township bids for rock and hauling will also be done on Feb. 5. The Highway Department will perform the annual bridge inspection on the West side of the County beginning in March and continuing through April. The Highway Department also completed an IDOT compliance audit in December. It was requested of Spesard to include a road address on his reports so the members can know the location of the various jobs.

Orman called for committee reports.

Rescue Squad Chair Williams informed the board the Rescue squad/Dive teams had responded to 8 calls recently and updated the board the Rescue Squad needed more budget funding to purchase needed equipment. The Rescue Squad needs a new truck.

LEC Chair Patterson stated the Sheriff's department would begin taking applications for deputies and the Sheriff's Merit Commission would draft a listing of qualified applicants. Patterson also mentioned legislation recently passed that will impact law enforcement and the county financially.

Under Chairman updates, Orman mentioned a refund of dues by UCCI in the amount of \$1,500. Orman stated some grievances were filed by Sheriff's office employees due to vacation time not being awarded at the beginning of the calendar year. The contract states vacation time is to be accrued on the anniversary of the date of hire. Since the 1990's vacation time has been given at the beginning of the calendar year. Past practice could potentially prevail should this go to the arbitration process. The agreement was made to allow the vacation time to be awarded at the beginning of January 2021 through August 31, 2021.

Continuing with Chairman appointments, Orman requested the following:

Reappoint Annie Reid to the Mental Health "708" Board. Drnjevic made motion to approve the appointment. Patterson seconded said motion, which passed by voice vote.

Reappoint Penny Standerfer to the Mental Health "708" Board. Simpson made motion to approve the appointment. B. Bennett seconded said motion, which passed by voice vote (19 yes, 0 no).

Appoint Gary Crowder to the Sheriff's Merit Commission. Patterson made motion to approve the appointment. Simpson seconded said motion, which passed by voice vote (19 yes, 0 no).

Appoint Ramiro Estrada to the Christian-Shelby 9-1-1 Board. Coffman made motion to approve the appointment. Hite seconded said motion, which passed by voice vote (19 yes, 0 no).

Chairman Orman informed the board they should have all received the county committee appointments and these had also been posted. M. Bennett made motion to appointments. Tate seconded said motion, which passed by voice vote.

Jeff Slifer requested that Orman send a letter to former board member Bruce Cannon requesting reimbursement for the 32 meetings he should not have be paid for between Feb. 2017 and December of 2019. This overpayment totals \$2,676.52.


Shelby County Board
January 14, 2021

A discussion was held regarding payment of the County Farm taxes due in 2020. State's Attorney Kroncke has requested a written opinion on this matter from the Illinois Attorney General. At this time, Orman made motion to table the payment of the county farm taxes. Baker seconded said motion, which passed by voice vote (19 yes, 0 no). Kroncke will continue to review this matter and wait for the opinion from the IL AG.

Swits made motion to approve the payment of the monthly claims as reviewed by the respective committees. B. Bennett seconded said motion, which passed by roll call vote (19 yes, 0 no). Aye – Baker, Bennet, B., Bennett, M., Canaday, Coffman, Drnjevic, Durbin, Gergeni, Hite, Lines, Orman, Patterson, Pearcy, Pogue, Simpson, Slifer, Swits, Tate and Williams. No – none.

At this time, Orman called for follow up to public body comment. During public body comment, Kirk Allen suggested asking the Dept. of Revenue for their input in regards to the County paying the farm taxes and also commented that just because something has always been done one way does not mean it is correct. Sonny Ross thanked the board for terminating the contract with Dove and Dove to represent the Sheriff's Merit Commission and putting PCOM back in the hands of the County Treasurer. Earl Baker asked about the forensic audit, the gun sales, and issues at the Highway Department. Kroncke stated she had spoken with John Vanderburg about the audit, he hopes to have it finished at the end of Feb. Kroncke has been in contact with 2 prosecuting agencies regarding the overpayment and the gun sales, as her office will have a conflict with the Sheriff's office. An investigation has just started regarding issues involving the County Highway Engineer.

Swits made motion to adjourn until the next regular meeting to be held on February 11, 2021. B. Bennett seconded said motion, which passed by voice vote (19 yes, 0 no) and the meeting was adjourned at 9:46 P.M.


Jessica Fox
Shelby County Clerk and Recorder

STATE OF ILLINOIS

ROLL CALL VOTES IN COUNTY BOARD

SHELBY COUNTY

Jan. 14, 2021 REGULAR MEETING

		ROLL CALL			QUESTIONS							
			1/14/2020	1/1/2020	Payment of ON MOTIONS TO Claim		ON MOTIONS TO		ON MOTIONS TO		ON MOTIONS TO	
COUNTY BOARD MEMBERS		MILEAGE	A.M.	P.M.	AYE	NAY	AYE	NAY	AYE	NAY	AYE	NAY
	BAKER, EARL	50	✓		✓							
	BARR, KENNETH	50	A									
	BENNETT, BARBARA	40	✓		✓							
	BENNETT, MARK	32	✓		✓							
	CANADAY, PAUL	0	✓		✓							
	COFFMAN, BRYON	48	✓		✓							
	DRNJEVIC, DENNIS	22	✓		✓							
	DURBIN, JESSE	12	✓		✓							
	GERGENI, GARY	26	✓		✓							
	HITE, ROD	56	✓		✓							
	LENZ, LARRY	26	A									
	LINES, PATRICK	0	✓		✓							
	METZGER, TERRY	0	A									
	ORMAN, ROBERT	34	✓		✓							
	PATTERSON, GARY	0	✓		✓							
	PEARCY, DEREK	20	✓		✓							
	POGUE, JOHN	0	✓		✓							
	SIMPSON ROBERT	32	✓		✓							
	SLIFER, JEFF	32	✓		✓							
	SWITS, DAVID	34	✓		✓							
	TATE, DON	40	✓		✓							
	WILLIAMS, LYNN	0	✓		✓							

ORDER OF BUSINESS

- 1st. The order of business will be as follows:
- Calling the roll.
 - Approve minutes of last meeting.
 - Amendments and approvals.
 - The presentation of petitions, communications and bills.
 - Reports of standing committees shall be received and acted upon in regular order as presented to the Chair.
 - Reports of special committees.
 - Resolutions and unfinished business.
- 2nd. All questions relating to the priority of business shall be decided without debate.
- 3rd. The Chairman shall preserve order and decide questions of order, subject to an appeal to the Board.
- 4th. Every member, before his speaking shall raise his hand and rise from his seat, if able, and address himself to the Chair. **
- 5th. When two or more members arise at once the Chair shall name the member who is to speak first.
- 6th. No member shall speak more than twice on the same question, without leave from the Board, and shall not occupy more than fifteen minutes the first time, no more than five the second.
- 7th. A member called to order whether by the Chair or any member of the Board, shall immediately take his seat, and if there be no appeal the decision of the Chair shall be conclusive.
- 8th. Every member present on the putting of a question if not directly interested, shall vote thereon, unless excused by the Board.
- 9th. No motion shall be debated upon or put unless first seconded. When a motion is seconded, it shall be stated by the Chair before debated, and every motion shall be reduced to writing by the maker when called upon by the Chairman or any member of the Board.
- 10th. When a blank is to be filled and different sums and times are proposed, the question shall first be put upon the largest sum and the longest time.
- 11th. A motion to adjourn shall always be in order, and shall be decided without debate, unless a question of time to adjourn shall occur.
- 12th. The Chair shall appoint all committees, unless otherwise directed by the Board.
- 13th. All committees shall report in writing, with the state of the facts and their opinions thereon, and the report to be signed by the majority of the committee. All committee meetings shall be voice recorded. Said recording kept on computer file in the County Clerk's
- 14th. There shall be 17 standing committees, as follows: Fees and Salaries, to consist of three members; County Farm, to consist of three members; Road and Bridge to consist of four members; Miscellaneous and Ambulance to consist of five members; Finance to consist of five members; Public Building, to consist of five members; Airport, to consist of three members; Animal Control, to consist of three members; County Public Health, to consist of five members; Purchasing, to consist of seven members; Zoning, to consist of three members; Emergency Services and Disaster Agency (ESDA), to consist of three members; Law Enforcement, composed of three members; Liquor, composed of the County Board Chairman and two members; Legislative, composed of five members; Public Aid, to consist of the County Board Chairman and 2 Republican and 2 Democratic members; and Insurance Risk, to consist of three members. *There shall also be an Executive Committee made up of the Chairman, Vice Chairman and the Chairs of the Fees/Salaries, Finance, Purchasing, and Legislative Committees.**
- 15th. No alterations shall be made in any of the Rules of the Board, without the consent of a majority of the members thereof, or without one day's notice being given of the proposed change.
- 16th. After a motion is stated by the chairman, or read by the Clerk, it shall be deemed to be in the possession of the Board but may be withdrawn by the mover with consent of second any time before a decision.
- 17th. The rules may be suspended in any particular case by a vote of two-thirds of the members present.
- 18th. All bids or petitions presented to the Board involving an outlay of public funds, upon the request of any one member of the Board, an aye and nay vote shall be taken; and in calling the names of the members they will be called in alphabetical order.
- 19th. All claims must be presented 7 days before the first day of any meeting of the Board to be considered at any such meeting.
- 20th. If any question arises not covered by these Rules, Board will be governed by Roberts' Rules of Order.
- 21st. Annual Budget must be approved by 2/3's of the members present.

Effective 1/14/2021

Shelby County Board

P.O. Box 230
Shelbyville, Illinois 62565

Phone:
217/774-4421

IDOT
David Maziarz
IDOT Compliance Project Manager
217-785-2751
david.maziarz@illinois.gov

January 15, 2021

Mr. Maziarz,

On January 14th, 2021 the Shelby County Board appointed Erica Firnhaber, Shelby County Treasurer, to serve as PCOM for the Shelby County Rural Transportation service area, effective immediately. Erica's contact information is listed as:

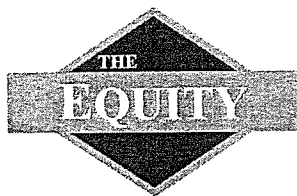
Erica Firnhaber, Shelby County Treasurer
P. O. Box 326
Shelbyville, IL 62565
217-774-3841
shcotre@shelbycounty-il.com

Should you have any questions, please do not hesitate to contact myself or Erica.

Sincerely,



Robert Orman, Chairman
Shelby County Board



ENERGY



P.O. Box 488
201 W. Roadway Ave.
Effingham, IL 62401

Phone: (217) 342-4101
Toll Free: (800) 223-1337
Fax: 217-347-7601

Shelby County Sheriff Fuel Bid

I would like to thank you for the opportunity to place a bid for your fuel needs. Effingham Equity will agree to provide the following equipment at no cost to the customer so long as all gasoline usage is purchased through The Equity. Customer will be responsible to provide a suitable location for our equipment and be responsible for any electrical expense to power our equipment. Please sign and return a copy upon approval.

(We currently have no licensed electricians on staff to do the required work)

Pricing

All pricing will be set at the same rate as the Shelby County Highway Department.

Current pricing is set at \$.10 over Robinson low Opis daily rack price.

The bid will be set for a five-year term to ensure a return on equipment and labor cost.

Equipment

1. 1000-gallon double wall tank
2. GPI 20 GPM pump with 17' hose and automatic nozzle
3. Piusi MC Box 1.5 (Fuel Management System)
4. Any required hardware/software required for fuel management system
5. Installation and training for fuel management system

Total retail value for tank, pump, and fuel management system -\$7627.00

Eddie Cavanah

Approved by _____

Title _____

VP Energy

Phone: 217-342-3123 Ext. 6113

eddie.cavanah@theequity.com

189

Eddie Cavanah

From: Ann Jansen
Sent: Thursday, January 14, 2021 8:03 AM
To: Jesse Mumm; Bill Murray; Amy Mathis; Eddie Cavanah; Mike Danneberger
Subject: FW: OPIS Wholesale Racks with OPIS Spot Mean 01-14-2021

From: opisadmin@opisnet.com
Sent: Thursday, January 14, 2021 8:03:03 AM (UTC-06:00) Central Time (US & Canada)
To: Ann Jansen
Subject: OPIS Wholesale Racks with OPIS Spot Mean 01-14-2021

Account #137242

To align the following data, change the font size to 9 in Courier New.

ROBINSON, IL 2021-01-14 09:00:32 EST
9.0 RVP

OPIS GROSS CLEAR PRICES

	Terms	Unl	Move	Mid	Move	Pre	Move	Date	Time
Marathon	u N-10	165.75	+ .05	-- --	-- --	178.25	- .65	01/13	18:00
Marathon	b 1-10	-- --	-- --	-- --	-- --	181.06	- .66	01/13	18:00
PSX	b 1-10	-- --	-- --	-- --	-- --	193.77	- .80	01/13	18:00
PSX	u N-10	-- --	-- --	-- --	-- --	189.00	- 1.00	01/13	18:00
LOW RACK		165.75		-- --		178.25			
HIGH RACK		165.75		-- --		193.77			
RACK AVG		165.75		-- --		185.52			
BRD LOW RACK		-- --		-- --		181.06			
BRD HIGH RACK		-- --		-- --		193.77			
BRD RACK AVG		-- --		-- --		187.42			
UBD LOW RACK		165.75		-- --		178.25			
UBD HIGH RACK		165.75		-- --		189.00			
UBD RACK AVG		165.75		-- --		183.63			
CONT AVG-01/13		165.70		-- --		186.30			
CONT LOW-01/13		165.70		-- --		178.90			
CONT HIGH-01/13		165.70		-- --		194.57			

ROBINSON, IL 2021-01-14 09:00:32 EST
9.0 RVP

OPIS GROSS CBOB ETHANOL(10%) PRICES

	Terms	Unl	Move	Mid	Move	Pre	Move	Date	Time
PSX	u N-10	147.00	- .75	160.50	- .75	187.50	- .75	01/13	18:00
Marathon	u N-10	147.05	- .65	160.38	- .65	202.05	- .65	01/13	18:00
PSX	b 1-10	151.35	- .80	164.48	- .80	191.75	- .80	01/13	18:00
Sunoco	b 125-3	151.46	- 1.63	-- --	-- --	198.38	- 1.62	01/13	18:00
Marathon	b 1-10	151.62	+ .31	165.08	+ .30	202.12	+ .30	01/13	18:00
Citgo	b 1-10	151.71	+ .17	167.87	+ .17	191.86	+ .17	01/13	18:00
Shell	u N-10	152.88	- .38	181.83	- .38	220.88	- .38	01/13	18:00
Shell	b 125-3	152.98	+ 2.93	176.58	+ 2.94	197.04	+ 2.93	01/12	18:00
LOW RACK		147.00		160.38		187.50			
HIGH RACK		152.98		181.83		220.88			
RACK AVG		150.76		168.10		198.95			
BRD LOW RACK		151.35		164.48		191.75			
BRD HIGH RACK		152.98		176.58		202.12			
BRD RACK AVG		151.82		168.50		196.23			
UBD LOW RACK		147.00		160.38		187.50			
UBD HIGH RACK		152.88		181.83		220.88			
UBD RACK AVG		148.98		167.57		203.48			
CONT AVG-01/13		151.22		168.40		199.41			
CONT LOW-01/13		147.70		161.03		188.25			



EFFINGHAM EQUITY
P.O. Box 488 • Effingham, IL 62401
www.TheEquity.com
Phone (217) 342-4101 • Toll Free 800-223-1337

Invoice

9049468

Invoice Date 12/23/2020
Due Date 01/12/2021
Control Number 963525
Customer ID 46121

Salesperson Goad_C
Shipping Loc. 09Lov

Shelby County Highway Dept
1590 State Highway 16
Shelbyville, IL 62565-4470

Quantity	Description	Unit Price	Total \$
184.400 Gal	Nolead-E10	1.44 /Gal	265.54
184.400 Gal	Illinois Motor Fuel Tax - Gasoline/Gasohol	.387 /Gal	71.36
184.400 Gal	Environmental Impact Fee	.008 /Gal	1.48
184.400 Gal	Underground Storage Tank Tax	.003 /Gal	.55

Sub Total 338.93

Amount Due 338.93

Remit To: Effingham Equity
201 West Roadway
PO Box 488
Effingham IL 62401

Shelby County Highway Dept

Invoice

9049468

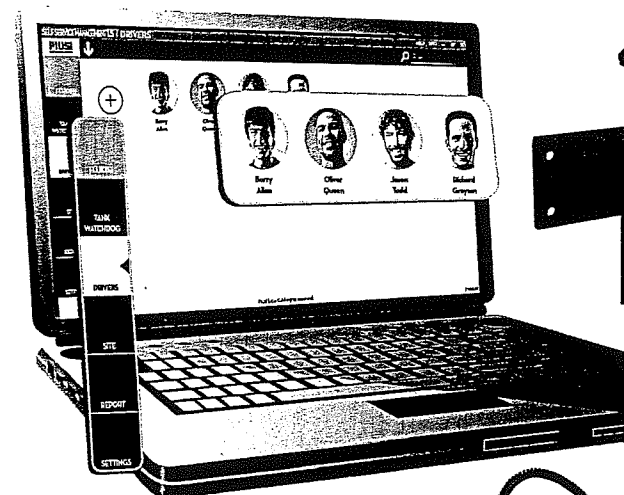
MC BOX 1.5

ECONOMICAL FLEET MANAGEMENT

The MC Box 1.5 is **certified ETL 1238** "Control equipment for use with flammable liquid dispensing devices." The MC Box 1.5 was designed for **small to mid-sized fleet management** and can monitor and **control up to 60 or 120 users** based on software. Data is transferred via gray management key which can record the last **650 transactions**.

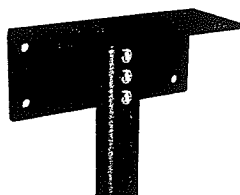
*MC Box and pump are powered by single circuit

- Setup, monitoring, and reporting done from your PC.
- Sliding front cover protects the display from wind and rain.
- Intuitive dashboard for fleet management.
- Lockable front panel for added security.
- Lowest storage temp: -4°F (-20°C)
- Lowest working temp: -4°F (-20°C)
- MC Box, Self Service Software, Key Reader, and manager key sold separately



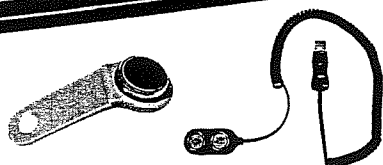
Pedestal:
(optional)

Part #
F1270800



Bottom
plate
mounting
bracket:
(optional)

Part #
F21729000



Part #	Description	Fluids	AC/DC volts/hz	Weight lb.	Packaging in.
F0059750	MCBox 1.5 - 90-240V 50-60HZ - ETL/CETL	Any	120/60	12	14 x 7.5 x 11.25
F20552000	Gray manager key for 1.5/2.0	-	-	-	-
F15904000	User keys (yellow - 10 pcs)	-	-	-	box of 10
F1226201A	Key Reader				

* Complete 1.5 management system requires: MC Box 1.5, Self Service 1.5 software (Standard or Professional), Gray Manager Key (F20552000), and Key Reader (F12262010).



SELF SERVICE 1.5 SOFTWARE

- Simplified dashboard panel.
- Data can be sent to a PC via electronic key with memory or key reader.
- Continuously monitors current tank levels, users, and vehicles.

Manager Key 1.5



Part #	Description	Control up to	Users
F00772400	SSM 1.5 Standard software 60 user 2 box	2 MC Boxes	60
F00772420	SSM 1.5 Professional sw 120 user 4 box	4 MC Boxes	120

PRICING EXAMPLE

No Lead E10 Pricing 1/14/21

Rack Price \$1.47

Margin \$.10

State tax \$.387

Environmental Fee \$.008

Underground Storage tax \$.003

Total Price All Tax \$1.96

Search Gas Prices

Show Search Options

62565

Search

☒ Regular ☐ Midgrade ☐ Premium ☐ Diesel

☒ All of Illinois State ☐ Illinois

Stations Areas Other Area

All Stations	All Areas	
2001	Abingdon	
7-Eleven	Addison	Prices in the last
76	Albion	24 hours
Amoco	Aledo	

(Hold Ctrl to select multiple areas/stations)

Search Gas prices

Lowest Regular Gas Prices in the Last 24 hours

- Regular Gas
- Midgrade
- Premium
- Diesel Fuel

Price	Station	Area	Thanks
<u>2.49</u> <u>update</u>	Clark 615 N Cedar St & W North 5th St	Shelbyville	<u>hendy72</u> 23 hours ago
<u>2.59</u> <u>update</u>	Casey's 1700 W Main St near Hickory St	Shelbyville	<u>Owner</u> 1 hour ago
<u>2.59</u> <u>update</u>	BP 1950 IL-16 & Clarksburg Rd	Shelbyville	<u>lathy6352</u> 24 hours ago

Shelby County Monthly Investment Report

			11/30/2020	12/31/2020
	ASSETS			
GENERAL	001-1000-00-000	BU CHECKING	\$7,516.59	\$7,516.59
GENERAL	001-1001-00-000	SC PAYROLL .50% INT	\$30,229.71	\$37,459.66
GENERAL	001-1005-00-000	FF AP CLAIMS .25% INT	\$27,164.75	\$20,091.57
GENERAL	001-1100-00-000	PC TREASURER	\$2,500.00	\$2,500.00
GENERAL	001-1101-00-000	PC PROBATION	\$50.00	\$50.00
GENERAL	001-1300-00-000	BU .15% INT	\$368,797.86	\$369,937.62
GENERAL	001-1302-00-000	FF .50% INT	\$2,253,568.88	\$2,260,609.73
GENERAL	001-1999-00-000	DUE TO/FROM GENERAL FUND	\$34,405.69	\$36,736.67
		Totals for Fund 001:	\$2,724,233.48	\$2,734,901.84
COUNTY HEALTH	002-1100-00-000	PETTY CASH	\$135.64	\$135.64
COUNTY HEALTH	002-1200-00-000	FF .50% INT	\$181,682.89	\$138,727.14
COUNTY HEALTH	002-1300-00-000	FF .375% INT	\$30,686.51	\$30,746.64
COUNTY HEALTH	002-1999-00-000	DUE TO/FROM GENERAL FUND	\$22.00	\$0.00
		Totals for Fund 002:	\$212,527.04	\$169,609.42
ANIMAL CONTROL	003-1300-00-000	SC .50% INT	\$55,619.51	\$57,324.05
ANIMAL CONTROL	003-1400-00-000	SC CD MATURES 1/31/2021 1.55%	\$25,193.22	\$25,193.22
ANIMAL CONTROL	003-1402-00-000	BU CD MATURES 1/31/2021 2.50%	\$41,517.77	\$41,778.67
		Totals for Fund 003:	\$122,330.50	\$124,295.94
AMBULANCE	004-1200-00-000	FF .50% INT	\$122,701.77	\$122,156.18
		Totals for Fund 004:	\$122,701.77	\$122,156.18
MENTAL HEALTH	005-1300-00-000	SC .50% INT	\$623,723.60	\$590,016.52
MENTAL HEALTH	005-1400-00-000	FF CD MATURES 2/3/2021 .50% INT	\$411,951.92	\$411,951.92
MENTAL HEALTH	005-1402-00-000	SC CD MATURES 1/25/2021 2.33%	\$416,604.41	\$416,604.41
MENTAL HEALTH	005-1403-00-000	SC CD MATURES 1/25/2022 2.53%	\$418,056.81	\$418,056.81
		Totals for Fund 005:	\$1,870,336.74	\$1,836,629.66
IMRF	006-1200-00-000	FF .50% INT	\$1,064,742.40	\$719,371.22
IMRF	006-1999-00-000	DUE TO/FROM GENERAL FUND	(\$35,446.66)	(\$36,736.67)
		Totals for Fund 006:	\$1,029,295.74	\$682,634.55
SOCIAL SECURITY	007-1200-00-000	FF .50% INT	\$307,774.21	\$283,199.13
		Totals for Fund 007:	\$307,774.21	\$283,199.13
INDEMNITY	008-1200-00-000	FF .50% INT	\$9,034.67	\$9,042.35
INDEMNITY	008-1400-00-000	SC CD MATURES 1/28/2021 1.55%	\$120,927.45	\$120,927.45
		Totals for Fund 008:	\$129,962.12	\$129,969.80
HEALTH INSURANCE	009-1002-00-000	BU SECTION 105	\$10,000.00	\$12,389.91
HEALTH INSURANCE	009-1203-00-000	BU SHELBY CO GROUP INS .01% INT	\$153,985.07	\$179,164.98
HEALTH INSURANCE	009-1450-00-000	PARADIGM HOLDINGS	\$46,662.00	\$46,662.00
		Totals for Fund 009:	\$210,647.07	\$238,216.89
COURT SECURITY	010-1200-00-000	FF .50% INT	\$61,462.20	\$65,228.37
		Totals for Fund 010:	\$61,462.20	\$65,228.37
COUNTY BRIDGE	011-1300-00-000	FF .50% INT	\$214,814.03	\$194,228.31
		Totals for Fund 011:	\$214,814.03	\$194,228.31
COUNTY HIGHWAY	012-1200-00-000	FF .50% INT	\$269,369.25	\$205,784.66
COUNTY HIGHWAY	012-1999-00-000	DUE TO/FROM GENERAL FUND	\$1,018.97	\$0.00
		Totals for Fund 012:	\$270,388.22	\$205,784.66
FASM	013-1300-00-000	SC .50% INT	\$200,234.79	\$201,501.49
		Totals for Fund 013:	\$200,234.79	\$201,501.49
COUNTY MFT	014-1300-00-000	SC .50% INT	\$930,790.52	\$962,839.42
		Totals for Fund 014:	\$930,790.52	\$962,839.42

TOURISM	015-1200-00-000	FF .50% INT Totals for Fund 015:	<u>\$23,264.35</u> \$23,264.35	<u>\$27,006.33</u> \$27,006.33
PROBATION	016-1200-00-000	FF .50% INT Totals for Fund 016:	<u>\$345,664.54</u> \$345,664.54	<u>\$353,417.52</u> \$353,417.52
ASSIST COURT	017-1200-00-000	FF .50% INT Totals for Fund 017:	<u>\$65,788.04</u> \$65,788.04	<u>\$70,044.59</u> \$70,044.59
LAW LIBRARY	018-1200-00-000	FF .50% INT Totals for Fund 018:	<u>\$6,310.85</u> \$6,310.85	<u>\$6,366.59</u> \$6,366.59
AUTOMATION	019-1200-00-000	FF .50% INT Totals for Fund 019:	<u>\$55,070.31</u> \$55,070.31	<u>\$57,488.82</u> \$57,488.82
RECORDING	020-1200-00-000	FF .50% INT	\$121,754.91	\$129,955.21
RECORDING	020-1400-00-000	SC CD MATURES 1/28/2021 1.55% Totals for Fund 020:	<u>\$103,172.25</u> \$224,927.16	<u>\$103,172.25</u> \$233,127.46
DRUG TRAFFIC PREVENTION	021-1200-00-000	FF .50% INT Totals for Fund 021:	<u>\$1,367.57</u> \$1,367.57	<u>\$1,468.82</u> \$1,468.82
AIRPORT	022-1000-00-000	FF .25% INT	\$2,580.42	\$2,752.33
AIRPORT	022-1300-00-000	MONEY MARKETS	\$55,904.50	\$55,904.50
AIRPORT	022-1400-00-000	CERTIFICATE OF DEPOSITS Totals for Fund 022:	<u>\$21,498.19</u> \$79,983.11	<u>\$21,498.19</u> \$80,155.02
CEFS	023-1200-00-000	FF .50% INT Totals for Fund 023:	<u>\$2,583.04</u> \$2,583.04	<u>\$2,586.30</u> \$2,586.30
HOME NURSING	024-1300-00-000	SC .50% INT	\$838,069.85	\$840,859.19
HOME NURSING	024-1400-00-000	BU CD MATURES 2/4/2021 2.50%	\$259,503.45	\$261,134.21
HOME NURSING	024-1402-00-000	SC CD MATURES 2/11/2021 1.55% Totals for Fund 024:	<u>\$103,172.24</u> \$1,200,745.54	<u>\$103,172.24</u> \$1,205,165.64
WIC	025-1200-00-000	FF .00% INT Totals for Fund 025:	<u>\$41,898.02</u> \$41,898.02	<u>\$51,158.99</u> \$51,158.99
LOCAL BRIDGE	026-1300-00-000	SC .50% INT Totals for Fund 026:	<u>\$175,045.41</u> \$175,045.41	<u>\$57,938.78</u> \$57,938.78
TOWNSHIP CONTRUCTION	028-1000-00-000	BU CHECKING Totals for Fund 028:	<u>\$0.23</u> \$0.23	<u>\$0.23</u> \$0.23
TOWNSHIP MFT	029-1300-00-000	SC .50% INT Totals for Fund 029:	<u>\$2,073,401.79</u> \$2,073,401.79	<u>\$2,267,360.77</u> \$2,267,360.77
COUNTY JAIL MEDICAL COST	030-1200-00-000	FF .50% INT Totals for Fund 030:	<u>\$2,671.45</u> \$2,671.45	<u>\$3,006.06</u> \$3,006.06
MINOR UNKNOWN HEIRS	032-1200-00-000	FF .50% INT	\$602.31	\$602.82
MINOR UNKNOWN HEIRS	032-1400-00-000	FF CD MATURES 3/29/2021 .75% Totals for Fund 032:	<u>\$44,318.78</u> \$44,921.09	<u>\$44,318.78</u> \$44,921.60
PUBLIC DEFENDER RECORDS AUTO	033-1200-00-000	FF .50% INT Totals for Fund 033:	<u>\$225.15</u> \$225.15	<u>\$265.34</u> \$265.34
SHOP WITH A COP	034-1200-00-000	FF .50% INT Totals for Fund 034:	<u>\$4,923.18</u> \$4,923.18	<u>\$4,929.39</u> \$4,929.39
PROBATION DRUG TESTING	037-1200-00-000	FF .50% INT Totals for Fund 037:	<u>\$16,439.57</u> \$16,439.57	<u>\$18,222.46</u> \$18,222.46
DRAINAGE	039-1000-00-000	FF .25% INT	\$953.84	\$922.43
DRAINAGE	039-1200-00-000	FF .50% INT	\$167,025.68	\$171,275.14
DRAINAGE	039-1400-00-000	FF CD MATURES 3/23/2021 .50%	\$203,830.55	\$203,830.55
DRAINAGE	039-1402-00-000	FF CD MATURES 3/29/2021 .75% Totals for Fund 039:	<u>\$103,073.73</u> \$474,883.80	<u>\$103,073.73</u> \$479,101.85

DOCUMENT STORAGE	040-1200-00-000	FF .50% INT Totals for Fund 040:	<u>\$112,460.00</u>	<u>\$114,793.87</u>
MISC COUNTY HEALTH	043-1200-00-000	FF .50% INT Totals for Fund 043:	<u>\$406,232.48</u>	<u>\$489,899.07</u>
VICTIM IMPACT PANEL	046-1200-00-000	FF .50% INT Totals for Fund 046:	<u>\$15,665.73</u>	<u>\$15,840.17</u>
STATE'S ATTORNEY FORFEITED	047-1200-00-000	FF .50% INT Totals for Fund 047:	<u>\$1,138.81</u>	<u>\$1,140.25</u>
RESCUE SQUAD DIVE TEAM	050-1200-00-000	FF .50% INT Totals for Fund 050:	<u>\$3,673.01</u>	<u>\$3,677.68</u>
DUI EQUIPMENT	051-1200-00-000	FF .50% INT Totals for Fund 051:	<u>\$31,248.86</u>	<u>\$31,288.19</u>
GIS	052-1200-00-000	FF .50% INT	\$227,036.05	\$228,540.80
GIS	052-1400-00-000	SC CD MATURES 1/28/2021 1.55% Totals for Fund 052:	<u>\$206,344.49</u>	<u>\$206,344.49</u>
CAPITAL IMPROVEMENT	054-1300-00-000	FF .375% INT Totals for Fund 054:	<u>\$83,117.34</u>	<u>\$83,143.82</u>
PET POPULATION	055-1000-00-000	SC .50% INT	\$21,470.03	\$22,042.13
PET POPULATION	055-1400-00-000	SC CD MATURES 1/31/2021 1.55% Totals for Fund 055:	<u>\$20,154.58</u>	<u>\$20,154.58</u>
EMA SPECIAL	056-1300-00-000	SC .50% INT Totals for Fund 056:	<u>\$15,380.37</u>	<u>\$15,386.88</u>
STATE'S ATTORNEY AUTOMATION	057-1200-00-000	FF .50% INT Totals for Fund 057:	<u>\$5,748.49</u>	<u>\$5,803.72</u>
DRUG COURT	058-1200-00-000	FF .50% INT Totals for Fund 058:	<u>\$22,978.53</u>	<u>\$23,688.85</u>
TAX SALE AUTOMATION	060-1200-00-000	FF .50% INT Totals for Fund 060:	<u>\$8,179.35</u>	<u>\$6,969.23</u>
RESCUE SQUAD	062-1200-00-000	FF .50% INT Totals for Fund 062:	<u>\$14,021.13</u>	<u>\$17,014.94</u>
CORONER SPECIAL FUND	063-1200-00-000	FF .50% INT Totals for Fund 063:	<u>\$27,261.23</u>	<u>\$27,445.35</u>
SOLID WASTE FUND	064-1200-00-000	FF .50% INT Totals for Fund 064:	<u>\$882.36</u>	<u>\$883.47</u>
SALE IN ERROR	065-1200-00-000	FF .50% INT Totals for Fund 065:	<u>\$6,264.85</u>	<u>\$6,272.75</u>
Total			<u>\$14,476,819.09</u>	<u>\$14,235,258.46</u>
Total ASSETS			<u>\$14,476,819.09</u>	<u>\$14,235,258.46</u>
LIABILITIES AND FUND BALANCE				
LIABILITIES				
GENERAL	001-2001-00-000	ACCOUNTS PAYABLE CLEARING	\$2,150.00	\$2,150.00
GENERAL	001-2002-00-000	PAYROLL CLEARING	\$63,824.76	\$66,516.28
Totals for Fund 001:			<u>(\$65,974.76)</u>	<u>(\$68,666.28)</u>
TOTAL LIABILITIES			<u>\$65,974.76</u>	<u>\$68,666.28</u>
TOTAL LIABILITIES AND FUND BALANCE			<u>\$65,974.76</u>	<u>\$68,666.28</u>

**Shelby County Collector
Balance Sheet
County Collector Accounts**

		11/30/2020	12/31/2020
Assets			
100-1001-001	SHELBY COUNTY STATE BANK .50% INT	\$743.72	\$743.72
100-1203-003	1ST NATL BANK OF ASSUMPTION	\$76.53	\$76.53
100-1205-005	COMMUNITY BANKS OF SHELBY COUNTY	\$50.00	\$50.00
100-1210-010	SCSB-STRASBURG .29% INT	\$406.94	\$406.94
100-1215-015	BUSEYBANK-TAX TRUST .01% INT	\$11,615.80	\$11,615.80
100-1301-001	SHELBY COUNTY STATE BANK .50% INT	\$4,198.47	\$3,885.72
100-1302-002	BUSEYBANK .15% INT	\$1,522.54	\$1,522.54
100-1304-004	FIRST NATL BANK OF NOKOMIS-MOWEAQUA .08% INT	\$763.34	\$763.34
100-1306-006	SCSB-FINDLAY .50% INT	\$313.98	\$313.98
100-1307-007	FIRST NATL BANK OF PANA .39% INT	\$238.04	\$238.04
100-1308-008	PEOPLES BANK & TRUST-PANA	\$50.00	\$50.00
100-1309-009	1ST NATL BANK OF WATERLOO-STEWARDSON .20% INT	\$72.08	\$72.08
100-1311-011	SCSB-WINDSOR .50% INT	\$947.08	\$947.08
100-1312-012	DEWITT SAVINGS BANK-MOWEAQUA .03% INT	\$250.00	\$250.00
100-1313-013	FIRST FEDERAL S & L .15% INT	\$119,521.78	\$124,472.40
100-1316-016	TSB-TEUTOPOLIS STATE BANK-SIGEL .22% INT	\$215.25	\$215.25
100-1317-017	BANK OF HILLSBORO-PANA .14% INT	\$52.08	\$52.08
100-1318-018	SCSB-MOWEAQUA .50% INT	\$300.63	\$300.63
Total Assets		\$141,338.26	\$145,976.13
Liabilities and Fund Balance			
Fund Balance			
100-3000-000	Fund Balance--	\$141,424.66	\$146,062.53
Total Fund Balance		\$141,424.66	\$146,062.53
Total Liabilities and Fund Balance		\$141,424.66	\$146,062.53
BEGINNING BALANCE WITH CURRENT YEAR ADJUSTMENTS		\$3,925,815.83	\$3,925,815.83
NET SURPLUS/(DEFICIT)		(\$3,784,391.17)	(\$3,779,753.30)
ENDING FUND BALANCE		\$141,424.66	\$146,062.53

GENERAL FUND AVAILABLE CASH REPORT

FY 20

General Fund	September	October	November	December	January	February	March	April	May	June	July	August
Beginning Balance	\$2,619,477.42	\$2,445,173.36	\$3,013,355.22	\$2,887,161.24	\$2,583,412.86	\$2,389,186.28	\$2,332,869.66	\$2,159,315.02	\$2,129,657.17	\$1,890,659.16	\$1,712,257.10	\$2,758,762.11
-Payroll Liability	\$58,981.57	\$54,311.82	\$55,321.10	\$78,651.02	\$54,403.19	\$46,341.99	\$67,335.41	\$67,855.50	\$63,324.57	\$85,524.45	\$65,164.46	\$64,836.64
+Revenue	\$204,432.75	\$895,204.71	\$296,788.68	\$291,226.54	\$239,725.05	\$243,803.02	\$225,444.77	\$306,034.80	\$251,227.84	\$204,173.48	\$1,390,450.08	\$329,310.31
-Expense	\$374,067.06	\$328,032.13	\$446,312.58	\$570,727.14	\$425,890.43	\$321,106.38	\$399,519.50	\$331,161.72	\$512,425.73	\$362,215.55	\$343,616.45	\$401,889.08
+Payroll Liability	\$54,311.82	\$55,321.10	\$78,651.02	\$54,403.19	\$46,341.99	\$67,335.41	\$67,855.50	\$63,324.57	\$85,524.45	\$65,164.46	\$64,836.64	\$65,165.39
Ending Balance	\$2,445,173.36	\$3,013,355.22	\$2,887,161.24	\$2,583,412.81	\$2,389,186.28	\$2,332,869.66	\$2,159,315.02	\$2,129,657.17	\$1,890,659.16	\$1,712,257.10	\$2,758,762.91	\$2,686,512.89
-Restricted Funds	\$737,088.97	\$737,008.38	\$732,085.99	\$554,478.07	\$551,860.55	\$549,361.66	\$547,214.05	\$545,896.86	\$545,200.24	\$545,025.59	\$544,942.74	\$544,979.74
Cash Balance	\$1,708,084.39	\$2,276,346.84	\$2,155,075.25	\$2,028,934.74	\$1,837,325.73	\$1,783,508.00	\$1,612,100.97	\$1,583,760.31	\$1,345,458.92	\$1,144,083.27	\$2,213,820.17	\$2,141,533.15

FY 21

General Fund	September	October	November	December	January	February	March	April	May	June	July	August
Beginning Balance	\$2,686,512.89	\$2,708,642.71	\$3,101,844.92	\$3,017,997.89								
-Payroll Liability	\$65,165.39	\$62,838.38	\$89,902.56	\$65,974.76								
+Revenue	\$414,333.03	\$839,703.73	\$275,720.54	\$682,048.04								
-Expense	\$389,876.20	\$473,565.70	\$335,639.77	\$646,474.90								
+Payroll Liability	\$62,838.38	\$89,902.56	\$65,974.76	\$68,666.28								
Ending Balance	\$2,708,642.71	\$3,101,844.92	\$3,017,997.89	\$3,056,262.55								
-Restricted Funds	\$544,856.21	\$544,569.45	\$544,367.17	\$339,312.00								
Cash Balance	\$2,163,786.50	\$2,557,275.47	\$2,473,630.72	\$2,716,950.55								

Engr Design
of Practices
RBT

20-15136-008R

TO: THE SHELBY COUNTY BOARD

WE, THE MEMBERS OF THE ROAD AND BRIDGE COMMITTEE, HAVING
EXAMINED THE ATTACHED

RESOLUTION _____

PETITION _____

AGREEMENT X

DO HEREBY RECOMMEND APPROVAL OF SAME BY THE COUNTY BOARD.

RESPECTFULLY SUBMITTED,
ROAD & BRIDGE COMMITTEE

Municipality	L O C A L A G E N C Y	 Illinois Department of Transportation Preliminary Engineering Services Agreement For Motor Fuel Tax Funds	C O N S U L T A N T	Name Civil Design, Inc.
Township Prairie				Address 104 N. Second St., Suite A
County Shelby				City Effingham
Section 20-15136-00-DR				State Illinois

THIS AGREEMENT is made and entered into this 14th day of January 2021 between the above Local Agency (LA) and Consultant (ENGINEER) and covers certain professional engineering services in connection with the improvement of the above SECTION. Motor Fuel Tax Funds, allotted to the LA by the State of Illinois under the general supervision of the State Department of Transportation, hereinafter called the "DEPARTMENT", will be used entirely or in part to finance ENGINEERING services as described under AGREEMENT PROVISIONS.

Section Description

Name Engineering Services to replace the 600N over Drainage Ditch structure

Route 600N Length Mi. ±300 FT (Structure No.)

Termini Approx. ±150' west of the bridge to ±150' east of the structure, to be determined in design

Description:
2.7 mi. N of Stewardson, T10N R5E SEC 15 and 22, 3rd PM

Agreement Provisions

The Engineer Agrees,

1. To perform or be responsible for the performance of the following engineering services for the LA, in connection with the proposed improvements herein before described, and checked below:
 - a. ☒ Make such detailed surveys as are necessary for the preparation of detailed roadway plans
 - b. ☒ Make stream and flood plain hydraulic surveys and gather high water data, and flood histories for the preparation of detailed bridge plans.
 - c. ☒ Make or cause to be made such soil surveys or subsurface investigations including borings and soil profiles and analyses thereof as may be required to furnish sufficient data for the design of the proposed improvement. Such investigations are to be made in accordance with the current requirements of the DEPARTMENT.
 - d. ☐ Make or cause to be made such traffic studies and counts and special intersection studies as may be required to furnish sufficient data for the design of the proposed improvement.
 - e. ☒ Prepare Army Corps of Engineers Permit, Department of Natural Resources-Office of Water Resources Permit, Bridge waterway sketch, and/or Channel Change sketch, Utility plan and locations, and Railroad Crossing work agreements.
 - f. ☒ Prepare Preliminary Bridge design and Hydraulic Report, (including economic analysis of bridge or culvert types) and high water effects on roadway overflows and bridge approaches.
 - g. ☒ Make complete general and detailed plans, special provisions, proposals and estimates of cost and furnish the LA with five (5) copies of the plans, special provisions, proposals and estimates. Additional copies of any or all documents, if required, shall be furnished to the LA by the ENGINEER at his actual cost for reproduction.
 - h. ☐ Furnish the LA with survey and drafts in quadruplicate of all necessary right-of-way dedications, construction easement and borrow pit and channel change agreements including prints of the corresponding plats and staking as required.

Note: Four copies to be submitted to the Regional Engineer

- i. ☒ Assist the LA in the tabulation and interpretation of the contractors' proposals
 - j. ☒ Prepare the necessary environmental documents in accordance with the procedures adopted by the DEPARTMENT's Bureau of Local Roads & Streets.
 - k. ☐ Prepare the Project Development Report when required by the DEPARTMENT.
 - l. ☐ Perform initial construction staking, including abutment centerline stakes, and roadway offset stakes.
- (2) That all reports, plans, plats and special provisions to be furnished by the ENGINEER pursuant to the AGREEMENT, will be in accordance with current standard specifications and policies of the DEPARTMENT. It is being understood that all such reports, plans, plats and drafts shall, before being finally accepted, be subject to approval by the LA and the DEPARTMENT.
- (3) To attend conferences at any reasonable time when requested to do so by representatives of the LA or the Department.
- (4) In the event plans or surveys are found to be in error during construction of the SECTION and revisions of the plans or survey corrections are necessary, the ENGINEER agrees that he will perform such work without expense to the LA, even though final payment has been received by him. He shall give immediate attention to these changes so there will be a minimum delay to the Contractor.
- (5) That basic survey notes and sketches, charts, computations and other data prepared or obtained by the Engineer pursuant to this AGREEMENT will be made available, upon request, to the LA or the DEPARTMENT without cost and without restriction or limitations as to their use.
- (6) That all plans and other documents furnished by the ENGINEER pursuant to this AGREEMENT will be endorsed by him and will show his professional seal where such is required by law.

The LA Agrees,

1. ~~To pay the ENGINEER as compensation for all services performed as stipulated in paragraphs 1a, 1b, 1c, 1f, 1g, 1h, 1i, 1j, 1k, 2, 3, 5 and 6 in accordance with one of the following methods indicated by a check mark: SEE ADDENDUM~~
- a. ☒ A sum of money equal to _____ percent of the awarded contract cost of the proposed improvement as approved by the DEPARTMENT. **SEE ADDENDUM**
 - b. ☐ A sum of money equal to the percent of the awarded contract cost for the proposed improvement as approved by the DEPARTMENT based on the following schedule:

Schedule for Percentages Based on Awarded Contract Cost

Awarded Cost	Percentage Fees	(see note)
Under \$50,000	_____	%
	_____	%
	_____	%
	_____	%
	_____	%

Note: Not necessarily a percentage. Could use per diem, cost-plus or lump sum.

2. ~~To pay for services stipulated in paragraph 1c of the ENGINEER AGREES at actual cost of performing such work plus _____ percent to cover profit, overhead and readiness to serve "actual cost" being defined as material cost plus payrolls, insurance, social security and retirement deductions. Traveling and other out of pocket expenses will be reimbursed to the ENGINEER at his actual cost. Subject to the approval of the LA, the ENGINEER may sublet all or part of the services provided under the paragraph 1b, 1c, 1d, 1e, 1f, 1h, 1j & 1k. If the ENGINEER sublets all or part of this work, the LA will pay the cost to the ENGINEER plus a five (5) percent service charge. SEE ADDENDUM~~
- "Cost to Engineer" to be verified by furnishing the LA and the DEPARTMENT copies of invoices from the party doing the work. The classifications of the employees used in the work should be consistent with the employee classifications for the services performed. If the personnel of the firm, including the Principal Engineer, perform routine services that should normally be performed by lesser-salaried personnel, the wage rate billed for such services shall be commensurate with the work performed.

3. That payments due the ENGINEER for services rendered in accordance with this AGREEMENT will be made as soon as practicable after the services have been performed ~~in accordance with the following schedule:~~
- ~~Upon completion of detailed plans, special provisions, proposals and estimate of cost being the work required by paragraphs 1a through 1g under THE ENGINEER AGREES to the satisfaction of the LA and their approval by the DEPARTMENT, 90 percent of the total fee due under this AGREEMENT based on the approved estimate of cost.~~
 - ~~Upon award of the contract for the improvement by the LA and its approval by the DEPARTMENT, 100 percent of the total fee due under the AGREEMENT based on the awarded contract cost, less any amounts paid under "a" above.~~

By Mutual agreement, partial payments, ~~not to exceed 90 percent of the amount earned,~~ may be made from time to time as the work progresses.

4. That, should the improvement be abandoned at any time after the ENGINEER has performed any part of the services provided for in paragraphs 1a, through 1h and prior to the completion of such services, the LA shall reimburse the ENGINEER for his actual costs plus 140.7 percent incurred up to the time he is notified in writing of such abandonment -"actual cost" being defined as in paragraph 2 of THE LA AGREES.
5. That, should the LA require changes in any of the detailed plans, specifications or estimates except for those required pursuant to paragraph 4 of THE ENGINEER AGREES, after they have been approved by the DEPARTMENT, the LA will pay the ENGINEER for such changes on the basis of actual cost plus 140.7 percent to cover profit, overhead and readiness to serve -"actual cost" being defined as in paragraph 2 of THE LA AGREES. It is understood that "changes" as used in this paragraph shall in no way relieve the ENGINEER of his responsibility to prepare a complete and adequate set of plans and specifications.

It is Mutually Agreed,

1. That any difference between the ENGINEER and the LA concerning their interpretation of the provisions of this Agreement shall be referred to a committee of disinterested parties consisting of one member appointed by the ENGINEER, one member appointed by the LA and a third member appointed by the two other members for disposition and that the committee's decision shall be final.
2. This AGREEMENT may be terminated by the LA upon giving notice in writing to the ENGINEER at his last known post office address. Upon such termination, the ENGINEER shall cause to be delivered to the LA all surveys, permits, agreements, preliminary bridge design & hydraulic report, drawings, specifications, partial and completed estimates and data, if any from traffic studies and soil survey and subsurface investigations with the understanding that all such material becomes the property of the LA. The ENGINEER shall be paid for any services completed and any services partially completed in accordance with Section 4 of THE LA AGREES.
3. That if the contract for construction has not been awarded one year after the acceptance of the plans by the LA and their approval by the DEPARTMENT, the LA will pay the ENGINEER the balance of the engineering fee due to make 100 percent of the total fees due under this AGREEMENT, based on the estimate of cost as prepared by the ENGINEER and approved by the LA and the DEPARTMENT.
4. That the ENGINEER warrants that he/she has not employed or retained any company or person, other than a bona fide employee working solely for the ENGINEER, to solicit or secure this contract, and that he/she has not paid or agreed to pay any company or person, other than a bona fide employee working solely for the ENGINEER, any fee, commission, percentage, brokerage fee, gifts or any other consideration, contingent upon or resulting from the award or making of this contract. For Breach or violation of this warranty the LA shall have the right to annul this contract without liability.

IN WITNESS WHEREOF, the parties have caused the AGREEMENT to be executed in quadruplicate counterparts, each of which shall be considered as an original by their duly authorized officers.

Executed by the LA:

Shelby County of the
(Municipality/Township/County)

ATTEST:

State of Illinois, acting by and through its

By [Redacted]
Shelby County Clerk

By [Redacted]
Title Shelby County Board Chairman

Executed by the ENGINEER:

Civil Design, Inc.

104 N. Second St., Suite A

Effingham, IL 62401

ATTEST:

By [Redacted]
Title Adam Bohnhoff, PE, SE Office Manager

By [Redacted]
Title Tyler Ziegler, PE, SE Project Manager

Approved

1-21-21

Date

Department of Transportation

[Redacted]
Regional Engineer

ADDENDUM
Preliminary Engineering Services Agreement

600N over Drainage Ditch
Prairie Township
Shelby County

- Revise Item 1 of THE LA AGREES to:

To pay the ENGINEER as compensation for all services performed as stipulated above and on the attached cost estimate summary sheet with one of the following methods indicated by a check mark:

- Revise Item 1a of THE LA AGREES to:

- a. A sum of money NOT TO EXCEED \$35,648.00, including out-of-pocket expenses such as mileage, printing, shipping costs, etc.

Civil Design Inc. Labor Fee =	\$33,548.00
Soil Boring Fee (MET) =	<u>\$ 2,100.00</u>
Total Engineering Fee =	\$35,648.00

600N over Drainage Ditch Structure Replacement
Prairie Township
Shelby County Highway Department

LABOR COSTS

Classification Hourly Rates	Proj Mgr \$165.00	Proj Eng II \$115.00	Proj Eng I \$92.00	Land Surv \$100.00	2-man survey \$160.00	Clerical \$75.00	
Task Description	Hours						Fee
FIELD SURVEY							
Perform Hydraulic Survey					36		\$ 5,760.00
Survey Data Processing				6			\$ 600.00
HYDRAULIC ANALYSIS							
Determine Drainage Area/Flows		4					\$ 460.00
Natural Model		12					\$ 1,380.00
Existing Model		6					\$ 690.00
Proposed Model		8					\$ 920.00
Scour Analysis		4					\$ 460.00
Special Ditches		6					\$ 690.00
Ditch Hydraulics		4					\$ 460.00
Entrance Culverts		2					\$ 230.00
REPORTS							
Preliminary Bridge Design & Hydraulic Report (PBDHR)		8	4				\$ 1,288.00
Scour Critical Evaluation Coding Report		1					\$ 115.00
Asbestos Determination Certification		1					\$ 115.00
PERMITS							
ESR (Cultural, Biological, Wetlands)		8	4				\$ 1,288.00
404 Permit (Joint Application)		4	2				\$ 644.00
SWPPP		4	2				\$ 644.00
ROADWAY PLANS							
Roadway Design		6					\$ 690.00
Coversheet		2	4				\$ 598.00
General Notes, SOQ, Schedules		6	4				\$ 1,058.00
Typical Sections, Field Entrance Details		4	4				\$ 828.00
Erosion Control and Drainage Details		4	4				\$ 828.00
Plan and Profile, Alignments and Ties		8	8				\$ 1,656.00
Cross Sections		2	4				\$ 598.00
Quantities		6					\$ 690.00
CULVERT PLANS							
Analysis and Design		4					\$ 460.00
Geometry of Culvert		4					\$ 460.00
General Plan and Elevation, Notes, Total Bill of Material		4	8				\$ 1,196.00
End Section Details		4	4				\$ 828.00
Railing Details, Rail Post Layout		4	2				\$ 644.00
Miscellaneous Details		4	2				\$ 644.00
Soil Borings			1				\$ 92.00
Quantities		8					\$ 920.00
FINAL PLANS, SPECIFICATIONS AND ESTIMATES							
Special Provisions		8					\$ 920.00
Estimate of Cost		4					\$ 460.00
Estimate of Time		4					\$ 460.00
Plan Revision Comments		2	2				\$ 414.00
Final Roadway QC/QA	4						\$ 660.00
Final Bridge QC/QA	4						\$ 660.00
MISCELLANEOUS							
Field Visit/Inspection		8					\$ 920.00
Shop Drawing Review		4					\$ 460.00
PROJECT MANAGEMENT & MEETINGS							
Project Management	4						\$ 660.00
Bid Meeting							\$ -
Grand Total Labor	12	172	59	6	36	0	
Total Costs							\$ 33,548.00

Scope of Work:

Remove and replace existing structure with a concrete box culvert. Resurface roadway/shoulders as needed, install guardrail if needed. Perform field survey, conduct hydraulic analysis and prepare all reports and permits as needed to gain design approval from District. Prepare final plans, special provisions and estimates. Assist the County with minor bidding and construction questions as necessary. Construction to be completed with Rebuild Illinois funds.

**Midwest Engineering and Technology, Inc.**

geotechnical - environmental - material engineers

501 Mercury Drive

Champaign, IL 61822

217-359-2128

FAX 217-359-8446

www.metgeotech.com

Estimate Worksheet

Mr. Tyler Ziegler
Civil Design Inc
104 N. Second Street, Suite A
Effingham, IL 62401
tziegler@civildesigninc.com

Proposal for Structural Borings
County Road 600 North
Over Drainage Ditch
Shelby County, Illinois
MET Proposal No. 9013
December 22, 2020

ESTIMATE WORKSHEET**Quantity****Unit Fee****Total*****Field Exploration Services***

Mobilization of drilling equipment and personnel	1	Lump Sum	\$450.00	\$450.00
Support vehicle	1	Days	\$100.00	\$100.00
Soil drilling and sampling per ft. (0-50 ft. depth)	60	Feet	\$14.00	\$840.00
Two-Man Flagger for traffic control	0	Hours	\$100.00	\$0.00
Traffic Control Equipment per Day	0	Days	\$125.00	\$0.00
Subtotal for Field Service:				\$1,390.00

Geotechnical Laboratory Soil Testing Services

Unconfined compressive strength tests	12	Tests	\$5.00	\$60.00
Moisture content tests	18	Tests	\$5.00	\$90.00
Dry Density Tests	12	Tests	\$5.00	\$60.00
Subtotal for Lab Service:				\$210.00

Engineering Services

Project Engineer- Coordination, and Log Preparation	4	Hours	\$125.00	\$500.00
Principal Engineer- Report Review and Consultation	0	Hours	\$150.00	\$0.00
Subtotal for Engineering Services:				\$500.00

TOTAL ESTIMATED FEE:**\$2,100.00**

Finishing
Cowden-Herrick Road

TO: THE SHELBY COUNTY BOARD

WE, THE MEMBERS OF THE ROAD AND BRIDGE COMMITTEE, HAVING
EXAMINED THE ATTACHED

RESOLUTION X

PETITION _____

AGREEMENT _____

DO HEREBY RECOMMEND APPROVAL OF SAME BY THE COUNTY BOARD.

RESPECTFULLY SUBMITTED,
ROAD & BRIDGE COMMITTEE

[Redacted Signature]

[Redacted Signature]

[Redacted Signature]

COUNTY of Shelby
Section No.: 19-00288-00 BR
Project No.: ZGJP(412)
Job No.: C-97-111-21
Addenda #2

RESOLUTION
2021-01

WHEREAS, the County of Shelby endeavors to resurface County Highway #22 (AKA The Cowden-Herrick Road) 5.04 miles in length and known to the Illinois Department of Transportation as MFT Section Number 19-00288-00 RS and State Job Number C-97-111-21.

WHEREAS, the cost of said improvement has necessitated the use of federal funds.

WHEREAS, the federal fund source requires a match of local funds.

WHEREAS, the use of federal funds requires a joint funding agreement (AGREEMENT) with the Department of Transportation.

NOW THEREFORE, BE IT RESOLVED that the County of Shelby authorizes thirty-one thousand dollars, (\$31,000) or as much of such sum as may be needed to match federal funds in the completion of the aforementioned project known as MFT Section Number 19-00288-00 RS.

BE IT FURTHER RESOLVED that the Chairman is hereby authorized and directed to execute the above-mentioned AGREEMENT and any other such documents related to advancement and completion of said project.

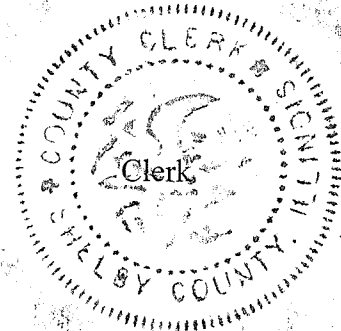
Certificate:

I, Jessica Fox, Clerk in and for said County in the State of Illinois, and keeper of the records and files thereof, as provided by statute, do hereby certify the foregoing to be a true, perfect, and complete copy of a Resolution adopted by the County Board at its meeting held on January 14, 2021.

In testimony whereof, I have hereunto set my hand and affixed the seal of said County at my office in Shelbyville, in Shelby County, this 14th day of January, 2021.

(SEAL)





Cowden - Joint Agreement
w/ IDOT
19-00288-00RS

TO: THE SHELBY COUNTY BOARD

WE, THE MEMBERS OF THE ROAD AND BRIDGE COMMITTEE, HAVING
EXAMINED THE ATTACHED

RESOLUTION _____

PETITION _____

AGREEMENT X _____

DO HEREBY RECOMMEND APPROVAL OF SAME BY THE COUNTY BOARD.

RESPECTFULLY SUBMITTED,
ROAD & BRIDGE COMMITTEE

[REDACTED]

[REDACTED]

[REDACTED]



LOCAL PUBLIC AGENCY

Local Public Agency		County	Section Number
Shelby County		Shelby	19-00288-00-RS
Fund Type	ITEP, SRTS, HSIP Number(s)	MPO Name	MPO TIP Number
STR, SMA	N/A	N/A	N/A
<input checked="" type="checkbox"/> Construction on State Letting <input type="checkbox"/> Construction Local Letting <input type="checkbox"/> Day Labor <input type="checkbox"/> Local Administered Engineering <input type="checkbox"/> Right-of-Way			
Construction		Engineering	
Job Number	Project Number	Job Number	Project Number
C-97-111-21	ZGJP(412)		

This Agreement is made and entered into between the above local public agency, hereinafter referred to as the "LPA" and the State of Illinois, acting by and through its Department of Transportation, hereinafter referred to as "STATE". The STATE and LPA jointly propose to improve the designated location as described below. The improvement shall be consulted in accordance with plans prepared by, or on behalf of the LPA and approved by the STATE using the STATE's policies and procedures approved and/or required by the Federal Highway Administration, hereinafter referred to as "FHWA".

LOCATION

Local Street/Road Name	Key Route	Length	Stationing	
East 000 North Road	FAS 0651	2.42 miles	From	To
			17.93	20.35
Location Termini				
North 1800th Street to Fayette / Shelby County Line				
Current Jurisdiction	Existing Structure Number(s)	<input type="button" value="Add Location"/>		
Shelby County	N/A	<input type="button" value="Remove"/>		

LOCATION

Local Street/Road Name	Key Route	Length	Stationing	
North 1450 East Road	FAS 0651	2.42 miles	From	To
			0.00	2.42
Location Termini				
Fayette / Shelby County Line to ILL 128				
Current Jurisdiction	Existing Structure Number(s)	<input type="button" value="Add Location"/>		
Shelby County	N/A	<input type="button" value="Remove"/>		

PROJECT DESCRIPTION

Project consist of milling and resurfacing 1 1/2" Hot-Mix asphalt surface course, aggregate shoulders, paint pavement marking line, raised reflective pavement markers and other items to complete the project.

LOCAL PUBLIC AGENCY APPROPRIATION - REQUIRED FOR STATE LET CONTRACTS

By execution of this Agreement the LPA attests that sufficient moneys have been appropriated or reserved by resolution or ordinance to fund the LPA share of project costs. A copy of the authorizing resolution or ordinance is attached as an addendum.

METHOD OF FINANCING - (State-Let Contract Work Only)

Check One

☐ METHOD A - Lump Sum (80% of LPA Obligation _____)

Lump Sum Payment - Upon award of the contract for this improvement, the LPA will pay the STATE within thirty (30) calendar days of billing, in lump sum, an amount equal to 80% of the LPA's estimated obligation incurred under this agreement. The LPA will pay to the STATE the remainder of the LPA's obligation (including any nonparticipating costs) in a lump sum within thirty (30) calendar days of billing in a lump sum, upon completion of the project based on final costs.

☐ METHOD B - _____ Monthly Payments of _____ due by the _____ of each successive month.

Monthly Payments - Upon award of the contract for this improvement, the LPA will pay to the STATE a specified amount each month for an estimated period of months, or until 80% of the LPA's estimated obligation under the provisions of the agreement has been paid. The LPA will pay to the STATE the remainder of the LPA's obligation (including any nonparticipating costs) in a lump sum, upon completion of the project based upon final costs.

☒ METHOD C - LPA's Share BALANCE divided by estimated total cost multiplied by actual progress payment.

Progress Payments - Upon receipt of the contractor's first and subsequent progressive bills for this improvement, the LPA will pay to the STATE within thirty (30) calendar days of receipt, an amount equal to the LPA's share of the construction cost divided by the estimated total cost multiplied by the actual payment (appropriately adjust for nonparticipating costs) made to the contractor until the entire obligation incurred under this agreement has been paid.

Failure to remit the payment(s) in a timely manner as required under Methods A, B, or C shall allow the STATE to internally offset, reduce, or deduct the arrearage from any payment or reimbursement due or about to become due and payable from the STATE to the LPA on this or any other contract. The STATE at its sole option, upon notice to the LPA, may place the debit into the Illinois Comptroller's Offset System (15 ILCS 405/10.05) or take such other and further action as may be required to recover the debt.

THE LPA AGREES:

1. To acquire in its name, or in the name of the STATE if on the STATE highway system, all right-of-way necessary for this project in accordance with the requirements of Titles II and III of the Uniform Relocation Assistance and Real Property Acquisition Policies Act of 1970, and established State policies and procedures. Prior to advertising for bids, the LPA shall certify to the STATE that all requirements of Titles II and III of said Uniform Act have been satisfied. The disposition of encroachments, if any, will be cooperatively determined by representatives of the LPA, the STATE, and the FHWA if required.
2. To provide for all utility adjustments and to regulate the use of the right-of-way of this improvement by utilities, public and private, in accordance with the current Utility Accommodation Policy for Local Public Agency Highway and Street Systems.
3. To provide for surveys and the preparation of plans for the proposed improvement and engineering supervision during construction of the proposed improvement.
4. To retain jurisdiction of the completed improvement unless specified otherwise by addendum (addendum should be accompanied by a location map). If the improvement location is currently under road district jurisdiction, a jurisdictional addendum is required.
5. To maintain or cause to be maintained the completed improvement (or that portion within its jurisdiction as established by addendum referred to in item 4 above) in a manner satisfactory to the STATE and the FHWA.
6. To comply with all applicable Executive Orders and Federal Highway Acts pursuant to the Equal Employment Opportunity and Nondiscrimination Regulations required by the U.S. Department of Transportation.
7. To maintain for a minimum of 3 years after final project close out by the STATE, adequate books, records and supporting documents to verify the amounts, recipients and uses of all disbursements of funds passing in conjunction with the contract. The contract and all books, records, and supporting documents related to the contract shall be available for review and audit by the Auditor General and the STATE. The LPA agrees to cooperate fully with any audit conducted by the Auditor General, the STATE, and to provide full access to all relevant materials. Failure to maintain the books, records, and supporting documents required by this section shall establish presumption in favor of the STATE for recovery of any funds paid by the STATE under the contract for which adequate books, records and supporting documentation are not available to support their purported disbursement.
8. To provide if required, for the improvement of any railroad-highway grade crossing and rail crossing protection within the limits of the proposed improvement.
9. To comply with Federal requirements or possibly lose (partial or total) Federal participation as determined by the FHWA.
10. (Local Contracts or Day Labor) To provide or cause to be provided all of the initial funding, equipment, labor, material and services necessary to complete the project.
11. (Preliminary Engineering) In the event that right-of-way acquisition for, or construction of, the project for which this preliminary engineering is undertaken with Federal participation is not started by the close of the tenth fiscal year following FHWA authorization, the LPA will repay the STATE any Federal funds received under the terms of this agreement.
12. (Right-of-Way Acquisition) In the event construction has not commenced by the close of the twentieth fiscal year following FHWA authorization using right-of-way acquired this agreement, the LPA will repay the STATE any Federal Funds received under the terms of this agreement.
13. (Railroad Related Work) The LPA is responsible for the payment of the railroad related expenses in accordance with the LPA/ railroad agreement prior to requesting reimbursement from the STATE. Requests for reimbursement should be sent to the appropriate IDOT District Bureau of Local Roads and Streets Office. Engineer's Payment Estimates shall be in accordance with the Division of Cost.
14. Certifies to the best of its knowledge and belief that it's officials:
 - a. are not presently debarred, suspended, proposed for debarment, declared ineligible or voluntarily excluded from covered transactions by any Federal department or agency;
 - b. have not within a three-year period preceding this agreement been convicted of or had a civil judgment rendered against them for commission of fraud or a criminal offense in connection with obtaining, attempting to obtain, or performing a public (Federal, State or local) transaction or contract under a public transaction; violation of Federal or State antitrust statutes or commission of embezzlement, theft, forgery, bribery, falsification or destruction of records, making false statements receiving stolen property;
 - c. are not presently indicted for or otherwise criminally or civilly charged by a governmental entity (Federal, State, Local) with commission of any of the offenses enumerated in item (b) of this certification; and

- d. have not in a three-year period preceding the agreement had one or more public transactions (Federal, Local) terminated for cause or default.
15. To include the certifications, listed in item 14 above, and all other certifications required by State statutes, in every contract, including procurement of materials and leases of equipment.
16. (STATE Contracts). That execution of this agreement constitutes the LPA's concurrence in the award of the construction contract to the responsible low bidder as determined by the STATE.
17. That for agreements exceeding \$100,000 in federal funds, execution of this agreement constitutes the LPA's certification that:
- a. No federal appropriated funds have been paid or will be paid, by or on behalf of the undersigned, to any person for influencing or attempting to influence an officer or employee of any agency, a member of congress, an officer or employee of congress, or any employee of a member of congress in connection with the awarding of any federal contract, the making of any cooperative agreement, and the extension, continuation, renewal, amendment or modification of any Federal contract, grant, loan or cooperative agreement.
 - b. If any funds other than federal appropriated funds have been paid or will be paid to any person for influencing or attempting to influence an officer or employee of any agency, a member of congress, an officer or employee of congress or an employee of a member of congress in connection with this federal contract, grant, loan, or cooperative agreement, the undersigned shall complete and submit standard form - LLL, "Disclosure Form to Report Lobbying", in accordance with its instructions.
 - c. The LPA shall require that the language of this certification be included in the award documents for all subawards (including subcontracts, subgrants and contracts under grants, loans and cooperative agreements), and that all subrecipients shall certify and disclose accordingly.
18. To regulate parking and traffic in accordance with the approved project report.
19. To regulate encroachments on public rights-of-way in accordance with current Illinois Compiled Statutes.
20. To regulate the discharge of sanitary sewage into any storm water drainage system constructed with this improvement in accordance with the current Illinois Compiled Statutes.
21. To comply with the federal Financial Integrity Review and Evaluation (FIRE) program, which requires States and subrecipients to justify continued federal funding on inactive projects. 23 CFR 630.106(a)(5) defines an inactive project as a project in which no expenditures have been charged against federal funds for the past twelve (12) months.
22. (Reimbursement Requests) For reimbursement requests the LPA will submit supporting documentation with each invoice. Supporting documentation is defined as verification of payment, certified time sheets or summaries, vendor invoices, vendor receipts, cost plus fix fee invoice, progress report, personnel and direct cost summaries, and other documentation supporting the requested reimbursement amount (Form BLR 05621 should be used for consultant invoicing purposes). LPA invoice requests to the STATE will be submitted with sequential invoice numbers by project.
23. (Final Invoice) The LPA will submit to the STATE a complete and detailed final invoice with applicable supporting documentation of all incurred costs, less previous payments, no later than twelve (12) months from the date of completion of work or from the date of the previous invoice, which ever occurs first. If a final invoice is not received within this time frame, the most recent invoice may be considered the final invoice and the obligation of the funds closed. Form BLR 05613 (Engineering Payment Record) is required to be submitted with the final invoice on the engineering projects.
24. (Project Closeout) The LPA shall provide the final report to the appropriate STATE district office within twelve (12) months of the physical completion date of the project so that the report may be audited and approved for payment. If the deadline cannot be met, a written explanation must be provided to the district prior to the end of the twelve (12) months documenting the reason and the new anticipated date of completion. If the extended deadline is not met, this process must be repeated until the project is closed. Failure to follow this process may result in the immediate close-out of the project and loss of further funding.
25. (Project End Date) For Preliminary Engineering projects the end date is ten (10) years from the execution date of the agreement. For Right-of-Way projects the end date is fifteen (15) years from the execution date of the agreement. For Construction projects the end date is five (5) years for projects under \$1,000,000 or seven (7) years for projects over \$1,000,000 from the execution date of the agreement. Requests for time extensions and joint agreement amendments must be received and approved prior to expiration of the project end date. Failure to extend the end date may result in the immediate close-out of the project and loss of further funding.
26. (Single Audit Requirements) That if the LPA expends \$750,000 or more a year in federal financial assistance they shall have an audit made in accordance with 2 CFR 200. LPA's expending less than \$750,000 a year shall be exempt from compliance. A copy of the audit report must be submitted to the STATE (Office of Internal Audit, Room 201, 2300 South Dirksen Parkway, Springfield, Illinois, 62764) within 30 days after the completion of the audit, but no later than one year after the end of the LPA's fiscal year. The CFDA number for all highway planning and construction activities is 20.205.
27. That the LPA is required to register with the System for Award Management or SAM, which is a web-enabled government-wide application that collects, validates, stores, and disseminates business information about the federal government's trading partners in support of the contract award and the electronic payment processes. To register or renew, please use the following website: <https://www.sam.gov/SAM/>
28. (Required Uniform Reporting) To comply with the Grant Accountability and Transparency Act (30 ILCS 708) that requires a uniform reporting of expenditures. Uniform reports of expenditures shall be reported no less than quarterly using IDOT's BoBS 2832 form available on IDOT's web page under the "Resources" tab. Additional reporting frequency may be required based upon specific conditions, as listed in the accepted Notice of State Award (NOSA). Specific conditions are based upon the award recipient/grantee's responses to the Fiscal and Administrative Risk Assessment (ICQ) and the Programmatic Risk Assessment (PRA).

NOTE: Under the terms of the Grant Funds Recovery Act (30 ILCS 705/4.1), "Grantor agencies may withhold or suspend the distribution of grant funds for failure to file requirement reports" if the report is more than 30 calendar days delinquent, without any

approved with an explanation by the grantee, the entity will be placed on the Illinois Stop Payment List. (Refer to the Grantee Compliance Enforcement System for detail about the Illinois Stop Payment List: <https://www.illinois.gov/sites/GATA/Pages/ResourceLibrary.aspx>)

THE STATE AGREES:

1. To provide such guidance, assistance, and supervision to monitor and perform audits to the extent necessary to assure validity of the LPA's certification of compliance with Title II and III Requirements.
2. (State Contracts) To receive bids for construction of the proposed improvement when the plans have been approved by the STATE (and FHWA, if required) and to award a contract for construction of the proposed improvement after receipt of a satisfactory bid.
3. (Day Labor) To authorize the LPA to proceed with the construction of the improvement when agreed unit prices are approved, and to reimburse the LPA for that portion of the cost payable from Federal and/or State funds based on the agreed unit prices and engineer's pay estimates in accordance with the division of cost page.
4. (Local Contracts) For agreements with federal and/or state funds in engineering, right-of-way, utility work and/or construction work:
 - a. To reimburse the LPA for federal and/or state share on the basis of periodic billings, provided said billings contain sufficient cost information and show evidence of payments by the LPA;
 - b. To provide independent assurance sampling and furnish off-site material inspection and testing at sources normally visited by STATE inspectors for steel, cement, aggregate, structural steel, and other materials customarily tested by the STATE.

IT IS MUTUALLY AGREED:

1. Construction of the project will utilize domestic steel as required by Section 106.01 of the current edition of the Standard Specifications for Road and Bridge Construction and federal Buy America provisions.
2. That this Agreement and the covenants contained herein shall become null and void in the event that the FHWA does not approve the proposed improvement for Federal-aid participation within one (1) year of the date of execution of this agreement.
3. This agreement shall be binding upon the parties, their successors and assigns.
4. For contracts awarded by the LPA, the LPA shall not discriminate on the basis of race, color, national origin or sex in the award and performance of any USDOT - assisted contract or in the administration of its DBE program or the requirements of 49 CFR part 26. The LPA shall take all necessary and reasonable steps under 49 CFR part 26 to ensure nondiscrimination in the award and administration of USDOT - assisted contracts. The LPA's DBE program, as required by 49 CFR part 26 and as approved by USDOT, is incorporated by reference in this agreement. Upon notification to the recipient of its failure to carry out its approved program, the STATE may impose sanctions as provided for under part 26 and may, in appropriate cases, refer the matter for enforcement under 18 U.S. C 1001 and/or the Program Fraud Civil Remedies Act of 1986 (31 U.S.C 3801 et seq.). In the absence of a USDOT - approved LPA DBE Program or on state awarded contracts, this agreement shall be administered under the provisions of the STATE'S USDOT approved Disadvantaged Business Enterprise Program.
5. In cases where the STATE is reimbursing the LPA, obligation of the STATE shall cease immediately without penalty or further payment being required if, in any fiscal year, the Illinois General Assembly or applicable federal funding source fails to appropriate or otherwise make available funds for the work contemplated herein.
6. All projects for the construction of fixed works which are financed in whole or in part with funds provided by this agreement and/or amendment shall be subject to the Prevailing Wage Act (820 ILCS 130/0.01 et seq.) unless the provisions of the act exempt its application.

ADDENDA

Additional information and/or stipulations are hereby attached and identified below as being a part of this agreement.

<input checked="" type="checkbox"/>	1. Location Map
<input checked="" type="checkbox"/>	2. Division of Cost
<input checked="" type="checkbox"/>	3. Local Agency Funding Resolution
Add Row	

The LPA further agrees as a condition of payment, that it accepts and will comply with the applicable provisions set forth in this agreement and all Addenda indicated above.

APPROVED

Local Public Agency

Name of Official (Print or Type Name)

Robert Orman

Title of Official

County Board Chairperson

Signature

[Redacted Signature]

Date

Jan-14-2021

The above signature certifies the agency's Tin number is
376002119 conducting business as a Governmental Entity.

Duns Number 040135279

APPROVED

State of Illinois
Department of Transportation

Omer Osman P.E., Acting Secretary

Date

[Redacted Signature]

5/31/21

By: George Tapas, Engineer of Local Roads and Streets

N/A

Director of Planning & Programming

Date

N/A

N/A

Date

Joanne Woodworth, Acting Chief Fiscal Officer

Date

N/A

NOTE: if the LPA signature is by an APPOINTED official, a resolution authorizing said appointed official to execute this agreement is required.

Bureau of Local Roads and Streets
Joint Agreement Approval List

7-1	C-91-402-15	Brookfield	\$3,080,000	
7-2	C-92-034-20	Winnebago County	\$4,070,000	
7-3	C-96-005-20	Menard County	\$625,000	
7-4	C-97-056-19	Fayette County	\$400,000	
7-5	C-98-018-21	Marion County	\$325,000	
8-1	C-99-085-19	Herrin	\$89,034	
9-1	C-94-072-14	Macomb	\$1,769,500	

The above is a listing of joint agreements for improvements scheduled for the State Letting. The joint funding agreements associated with these projects have been reviewed by the Department and recommended for execution. Concurrence is hereby given to execute the joint funding agreements listed above.

By: 
Orner Osmani, Acting Secretary

Date: 4/06/21

By: 
Joanne Woodworth, Acting Chief
Fiscal Officer

Date: 4-1-21

By: N/A
Director of Planning and
Programming

Date: N/A

By: 
Philip C. Kaufmann, Chief
Counsel

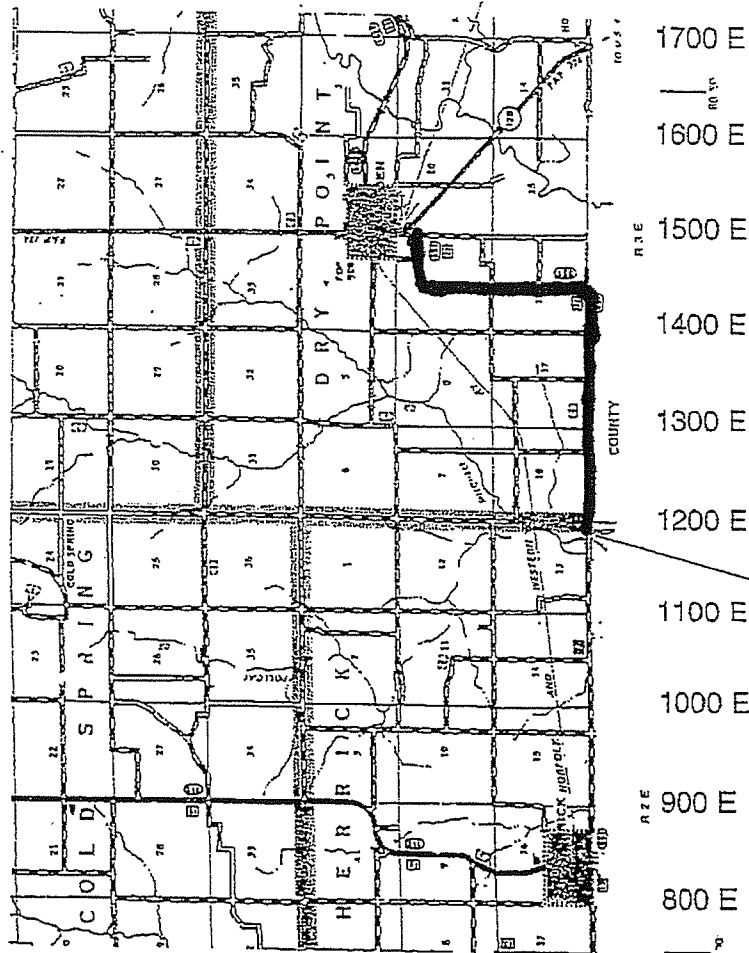
Date: 3/29/21

Bureau of Local Roads and Streets
Joint Agreement Approval List

Page	Job Number	Local Agency	Amount of Agreement	Excluded from Approval
1-1	C-91-018-17	Barrington	\$2,300,500	
1-2	C-91-232-16	Long Grove	\$1,864,438	
1-3	C-91-163-20	Algonquin	\$6,700,000	
1-4	C-91-423-15	Palos Heights	\$1,838,564	
1-5	C-91-175-18	Indian Head Park	\$1,857,089	
1-6	C-93-052-21	Genoa	\$480,000	
2-1	C-96-212-17	Quincy	\$1,000,000	
2-2	C-97-107-21	Decatur	\$1,300,000	
2-3	C-98-015-20	Belleville	\$831,045	
3-1	C-92-027-20	Ogle County	\$800,000	
3-2	C-92-038-20	Lee County	\$845,000	
3-3	C-93-059-20	Livingston County	\$2,600,000	
3-4	C-94-077-07	Knox County	\$950,000	
3-5	C-94-046-19	Fulton County	\$3,000,000	
3-6	C-94-077-20	McDonough County	\$1,075,000	
4-1	C-96-050-18	Schuyler County	\$650,000	
4-2	C-97-098-21	Clark County	\$850,000	
4-3	C-97-111-21	Shelby County	\$1,155,000	
4-4	C-99-012-19	Jackson County	\$740,000	
4-5	C-99-035-19	Pope County	\$436,000	
4-6	C-99-036-19	Pope County	\$316,000	
5-1	C-91-297-19	Cary Park District	\$1,249,000	
5-2	C-92-128-00	East Moline	\$3,554,875	
5-3	C-92-005-17	Port Byron	\$3,440,604	
5-4	C-97-137-21	Decatur Park District	\$1,927,740	
5-5	C-99-101-18	John A. Logan Community College	\$800,000	
6-1	C-91-126-16	Des Plaines	\$4,574,468	
6-2	C-91-251-16	Aurora	\$634,812	

LOCATION MAP

SHELBY COUNTY
19-00288-00-R5



ADDENDA NUMBER 2

Local Public Agency	County	Section Number
Shelby County	Shelby	19-00288-00-RS

Construction	Engineering	Right of Way
Job Number	Job Number	Job Number
C-97-111-21	ZGJP(412)	
Project Number	Project Number	Project Number

DIVISION OF COST

Type of Work	Federal Funds			State Funds			Local Public Agency		
	Fund Type	Amount	%	Fund Type	Amount	%	Fund Type	Amount	%
Participating Construction	STR	\$924,000.00	80%	SMA	\$200,000.00	*	Local Match	\$31,000.00	BAL
Total		\$924,000.00		Total	\$200,000.00		Total	\$31,000.00	
Total									\$1,155,000.00
Add									

If funding is not a percentage of the total place an asterisk (*) in the space provided for the percentage and explain below:

* Lump Sum State Match Assist NTE \$200,000 to be used as match to federal funds.

NOTE: The costs shown in the Division of Cost table are approximate and subject to change. The final LPA share is dependent on the final Federal and State participation. The actual costs will be used in the final division of cost for billing and reimbursement.

COUNTY of Shelby
Section No.: 19-00288-00 BR
Project No.: ZGJP(412)
Job No.: C-97-111-21
Addenda #2

RESOLUTION
2021-01

WHEREAS, the County of Shelby endeavors to resurface County Highway #22 (AKA The Cowden-Herrick Road) 5.04 miles in length and known to the Illinois Department of Transportation as MFT Section Number 19-00288-00 RS and State Job Number C-97-111-21.

WHEREAS, the cost of said improvement has necessitated the use of federal funds.

WHEREAS, the federal fund source requires a match of local funds.

WHEREAS, the use of federal funds requires a joint funding agreement (AGREEMENT) with the Department of Transportation.

NOW THEREFORE, BE IT RESOLVED that the County of Shelby authorizes thirty-one thousand dollars, (\$31,000) or as much of such sum as may be needed to match federal funds in the completion of the aforementioned project known as MFT Section Number 19-00288-00 RS.

BE IT FURTHER RESOLVED that the Chairman is hereby authorized and directed to execute the above-mentioned AGREEMENT and any other such documents related to advancement and completion of said project.

Certificate:

I, Jessica Fox, Clerk in and for said County in the State of Illinois, and keeper of the records and files thereof, as provided by statute, do hereby certify the foregoing to be a true, perfect, and complete copy of a Resolution adopted by the County Board at its meeting held on January 14, 20 21.

In testimony whereof, I have hereunto set my hand and affixed the seal of said County at my office in Shelbyville, in Shelby County, this 14th day of January, 20 21.

(SEAL)



Clerk

SHELBY COUNTY HIGHWAY DEPARTMENT

ANNUAL REPORT

JANUARY 01, 2020 THRU DECEMBER 31, 2020

Issued January 14, 2021

TABLE OF CONTENTS

- **Summary of Major Achievements**
- **County Highway Department Services**
 - **General Function, Personnel, Engineering, Maintenance**
- **Road & Bridge Committee Services**
 - **Function, Voting Members**
- **County Highway Department Funding**
 - **Annual Local & State Funding, State & Federal Controlled Funding, Miscellaneous Funding; Additional Awarded Funding**
- **Photos of Road & Bridge Capital Improvements**
- **Photos of Maintenance Program**
- **Support Services for other Departments**

COUNTY HIGHWAY DEPARTMENT SERVICES

SUMMARY 2020 MAJOR ACHIEVEMENTS

- Five Capital Improvement Construction Projects

- Windsor Township Bridge replacement was completed
- Ash Grove/Big Spring Bridge replacement was completed
- Prairie Township Bridge replacement was completed
- Clarksburg Township railroad crossing approach upgrades was completed (100% funded)
- Ridge Township railroad crossing approach upgrades is open to traffic (100% funded)

- Responded to approved Township & Village Petitions for drainage structure replacement

- 14 new Petitions for Township drainage structure replacements

- Awarded Grants for \$1.03 million County Highway #5 Road Improvements (AKA the Country Club Road):

- Federal grant award from the Federal Land Access Program (FLAP) = \$827,500.
- State grant award from the Truck Access Route Program (TARP) = \$206,500

- Approval to replace Bridges in Clarksburg Township and Moweaqua County Highway.

- Received additional funding from the "Rebuild Illinois" capital bill:

- County and Township Motor Fuel Tax (MFT) funds allotments increased by 68% due to 19 cent gas tax (Transportation Renewal Funds)
- Bond proceeds received into the MFT accounts - \$318,000 in the County MFT account
 - Cowden-Herrick road resurfacing
 - County Highway Bridge (AKA Westervelt Bridge)
 - County Highway #5 resurfacing Phase 1 (AKA Country Club Road)
 - Moweaqua County Highway Bridge 087-3000
- County Consolidated MFT funds increased by 68%

GENERAL FUNCTION:

The Shelby County Highway Department is dedicated to providing a high quality public service while performing the functions needed for the betterment of the Shelby County Highway System. The Shelby County Highway Department is directly responsible for the maintenance and capital improvements associated with 197.80 county roadway miles and 54 County Highway bridges.

The Shelby County Highway Department, subject to the general supervision and approval of the county board and to the rules and policies of the Illinois Department of Transportation, generally performs the following functions (ref. 605 ILCS 5/5 Division 2):

- Prepare or cause to be prepared all Plans, Specifications, and Estimates for all Capital Improvement Road & Bridge Projects, approved by the county board.
- Supervise the construction and maintenance of any public road or bridge constructed or maintained in whole or in part at the expense of the county.
- Generate and administer the Shelby County Highway Department Budget, approved by the county board.
- Provide technical and administrative assistance to township Highway Commissioners with regard to approximately 258 township bridges and 1250 miles of road
- Provide technical advice, and construction & maintenance support for township highway commissioners and municipalities, when requested and/or based on approved petitions
- Provide technical and administrative support for the Highway Commissioner's yearly Township Motor Fuel Tax Program and Rebuild Illinois Program.

SHELBY COUNTY HIGHWAY DEPARTMENT PERSONNEL:

The Personnel employed by Shelby County to perform the above functions are:

County Engineer: Alan Spesard, P.E.

*** Chief Engineer Assistant:** Mike Lorton

*** Engineer Assistants:** Scott Short (Retired in January)
Trevor Pruemer (Left for other employment January)
Reed Best (new employee hired in July)
1 open position

Secretary/Bookkeeper: Danielle Culberson

****Foreman:** Stacy Prosser

****Laborers:** John Agney
Kenneth Vail
Mike Binnion
Cody Miller
Shane Kircher
Jordon Camic
(2) Open Positions due to retirements and leaving employment

**** CDL Required * College Degree Required**



Beginning of 2020



End of 2020

ENGINEERING SERVICES (as of December 3, 2020):

1. Construction Oversight Projects:
 - a. Windsor Township bridge: Open to Traffic; IDOT audit need material certifications
 - b. Ash Grove/Big Spring Township Bridge: Open to Traffic; Final document & IDOT audit
 - c. Prairie Bridge: Open to Traffic, Final Documentation and IDOT audit
 - d. Clarksburg Railroad Crossing Approach: Open to Traffic, Final invoice to IDOT
 - e. Westervelt Railroad Crossing Approach: Open to Traffic, complete in Spring 2021
2. Design Projects in progress:
 - a. Cowden-Herrick Road: Design in-house; Submit Draft Plans in October; Received IDOT approval for FY 2021; Scheduled for March 2021 Bid
 - b. Country Club Road: Design in-house; Project Report approved; Acquire ROW and bid in November 2021 or January 2022
 - c. Findlay-Bethany Road: Design in-house; Programmed for FY 2025 construction
 - d. Todds Point Railroad Crossing Approach 2250N: Design in-House; Received Stipulated Agreement from ICC for signature; Bid in June 2021
 - e. Westervelt County Highway Bridge 087-3016: Consulting Engineering Firm; Acquire ROW and bid in September 2021
 - f. Rural Township Bridge 087-3304: Consulting Engineering Firm; Programmed for FY 2024 construction
 - g. Flat Branch Township Bridge 087-3101: Consulting Engineering Firm; Bid in April 2021
 - h. Rose Township Bridge 087-3135: Consulting Engineering Firm; Bid in June 2021
 - i. Shelbyville Township Bridge 087-3337: Consulting Engineering Firm; Programmed for FY 2023 construction
 - j. Ridge Township Bridge 087-3120: Consulting Engineering Firm; Programmed for FY 2023 construction
 - k. Ash Grove/Big Spring Township Bridge 087-3038: Consulting Engineering Firm; Programmed for FY 2024 construction
 - l. Oconee Township Bridge 087-3236: Consulting Engineering Firm; Programmed for FY 2025 construction
 - m. Clarksburg Bridge – 087-3198; Approved by Co. Board in November 2020
 - n. Moweaqua Road Bridge – 087-3000 Rebuild Illinois Funds; Approved by Co. Board in November 2020
 - o. Okaw RRxing approach 1975E: Design in-house

ENGINEERING SERVICES (as of December 3, 2020):

Continued

3. Miscellaneous Engineering Projects:

- a. Bridge Inspections: In-House inspections; Required by Federal Law
- b. Cross-Sections for over 300 Bridges: New IDOT requirement
- c. Right-Of-Way Plats and appraisals: Required to acquire easements for bridge and road projects
- d. Drainage Structure Highway Commissioner 50/50 Petitions: Construction by in-house Day Labor
- e. Inspection/GIS of township culverts: Consulting Engineering Firm
- f. Grant Application submitted in June for Federal Land Access Program
- g. Administer Township MFT and Rebuild Illinois programs – approve budgets; bid maintenance materials; provide advice to Highway Commissioners

4. Pending Projects:

- a. Prairie 2725E – Rebuild Illinois
- b. Richland Township Bridge 087-3186: requested by Richland Highway Commissioner
- c. Prairie/Sigel Bridge 087-3225 requested by Sigel Highway Commissioner
- d. Prairie Bridge – 087-3209 Requested by Prairie Highway Commissioner
- e. Herrick Bridge – 087-3062 Requested by Herrick Highway Commissioner
- f. Cold Spring Bridge – 087-3231 Requested by Cold Spring Highway Commissioner

• **Responded to Audits by outside agencies:**

- Bridge Inspection procedures were audited by IDOT in accordance with FHWA
- Motor Fuel Tax expenditures were audited by IDOT
- Construction Documentation procedures were audited by IDOT and FHWA

MAINTENANCE SERVICES

- **Maintenance of 198 miles of County Highways and 59 County Bridges**
 - **Maintenance to Highway Surfaces and Shoulders:**
 - Stockpiled and Spread rock for oil/chip seal coating of approximately 20 miles of County Highways.
 - Performed leveling overlay with cold-mix patch mix to over 15 miles of County Highways.
 - Applied Centerline Striping to 62 miles of County Highways.
 - Made 2500 ton of cold-mix at County Yard.
 - Performed shoulder repair with the “Tiger-Claw Retriever” along all County Highways and provided shoulder rock and patch-mix repairs as needed
 - Performed Snow Removal and Sand Treatment to 198 miles of roadway
 - **Maintenance to Bridges, Culverts, and Ditches:**
 - Installed 14 Drainage Repair Projects at 50% cost share for Townships: Windsor, Prairie, Pickaway, Ash Grove, Penn, Lakewood, Clarksburg, Ridge, Richland
 - Ditch Cleaning, Mowing, Weed/brush spraying/removal on most County Highways.
 - **Maintenance of Traffic Control Rural Reference Signs**
 - Replace or repaired several hundred rural reference and traffic control signs;
 - **Miscellaneous Maintenance Tasks:**
 - Provided in-house maintenance and repair to 24 County Highway owned vehicles and equipment.
 - Stockpiled sand for snow and ice control
 - Installed numerous field culvert entrances
 - Patching damaged Highway surface areas/holes and Shoulder Repair
 - Delivered Pipe Culverts to 19 Townships and provided culverts for 7 villages (including Cowden, Herrick, Shelbyville, Stewardson, Windsor, Strasburg, Tower Hill, Sigel)

ROAD & BRIDGE COMMITTEE

FUNCTION:

The R&B Committee meets a minimum of two times a month. The “Road Trip Committee Meeting” involves site visits across the county to view proposed county road and bridge construction, proposed township & municipality petition work, ongoing construction projects, and maintenance and insurance work (The road trip committee meeting will be discontinued in the future). The “Business Meeting” involves a review of county and township claims for compliance with that budgeted and a review of proposed petitions, resolutions and agreements. Occasionally the R&B committee have “Random Committee Meetings” in order to observe local lettings for bridges, roads, and maintenance contracts; review land acquisition document and appraisals for construction projects, and observe county hosted township highway commissioner educational conferences and/or other information meetings.

ROAD & BRIDGE COMMITTEE VOTING MEMBERS:

The 2020 Road & Bridge (R&B) Committee consisted of four county board members:

Chairman:	Bruce Cannon,	District No. 2
Committee Members:	Bryon Coffman,	District No. 1
	Jesse Durbin,	District No. 9
	Larry Lenz,	District No. 9
	Robert Simpson	District No. 4



KEY DECISIONS OF R&B COMMITTEE:

- Reviewed Highway Commissioner Petitions for drainage structure replacements
- Clarksburg Bridge was approved
- Review Covid-19 policies and staffing rotation
- Review County Highway finances and budgets
- Approve hiring of Engineering Technician
- Review County Highway expenses/claims
- Review of Snow Removal Policy
- Observe Bid Openings and review results
- Selection of Grant Project: Country Club Road
- Review plans for salt storage shed
- Cowden-Herrick road resurfacing
- County Highway Bridge (AKA Westervelt Bridge)
- County Highway #5 resurfacing Phase 1 (AKA Country Club Road)
- Moweaqua County Highway Bridge 087-3000
 - Prairie 2725E – Rebuild Illinois

ROAD & BRIDGE COMMITTEE

- **KEY DECISIONS OF R&B COMMITTEE:**
 - Richland Township Bridge 087-3186: requested by Richland Highway Commissioner
 - Prairie/Sigel Bridge 087-3225 requested by Sigel Highway Commissioner
 - Prairie Bridge – 087-3209 Requested by Prairie Highway Commissioner
 - Herrick Bridge – 087-3062 Requested by Herrick Highway Commissioner
 - Cold Spring Bridge – 087-3231 Requested by Cold Spring Highway Commissioner

COUNTY HIGHWAY DEPARTMENT FUNDING

ANNUAL LOCAL TAX & STATE MFT FUNDING

Shelby County receives local property tax funds and State motor fuel tax (MFT) funds. These funds are considered “Special Revenue Funds” due to the fact that they are legally restricted for expenditures for use by the Shelby County Highway Department for the construction and maintenance of Highways. The local tax revenues and expenditures are internally controlled by the County Bridge, County Highway, and Federal Aid Secondary accounts. The state motor fuel tax revenues and expenditures are internally controlled by the County Motor Fuel Tax and Township Motor Fuel Tax accounts. The expenditures and revenues associated with these funds are audited annually by the Shelby County contracted accounting firm of West & Company, LLC. In addition, the State & Township MFT expenditures and revenues are audited by the Illinois Department of Transportation.

Details associated with these revenues and expenditures for the current Fiscal Year ending in August 31, 2020 will be published by West & Company, LLC in a report entitled “AUDITED FINANCIAL STATEMENTS AND SUPPLEMENTAL INFORMATION” in the spring of 2021.

STATE & FEDERAL CONTROLLED FUNDING

The IDOT committed State and Federal Funding for Shelby County Capital Improvement Projects as follows:

Construction Costs using Federal, State and local Construction Funds for Bridge & Road Projects =\$1.4M

- Federal Bridge and Road Funds toward 80 % of the awarded contract construction and engineering costs for township and County bridges.
- State Bridge Funds toward the awarded design engineering, contract construction & construction engineering costs for township bridges construction
- Federal and State Funds for the Cowden-Herrick Road
- Federal and State Grant Funds for the Country Club Road Project

These funds are administered and controlled by the IDOT.

MISCELLANEOUS FUNDING

The Shelby County Highway Department miscellaneous funding as follows:

- Engineering fees from the \$3 million Township Motor Fuel Tax Program, totaling approximately \$100,000 for technical and contract administration services
- Maintenance expense reimbursement for approved petitions from townships and villages.
- Engineering Fees reimbursed for Construction Oversight of Grant funded projects: Wood Street Bridge
 - “Rebuild Illinois” capital bill was signed into law resulting in additional funding: County and Township MFT allotments increase – 68% - increase of \$252k per year
 - Bond proceeds to increase MFT Funding - \$959K over 3 years for County and \$4.1M for Townships

COUNTY HIGHWAY DEPARTMENT SPECIAL FUNDING

- **Rebuild Illinois Bond funds were approved for bondable projects in place of local funds:**
 - **Cowden-Herrick road resurfacing**
 - **County Highway Bridge (AKA Westervelt Bridge)**
 - **County Highway #5 resurfacing Phase 1 (AKA Country Club Road)**
 - **Moweaqua County Highway Bridge 087-3000**



Moweaqua County Highway Bridge 087-3000

- **Federal Land Access Program Grant to fund Phase 2 of County Highway #5 (AKA Country Club Road) was awarded to Shelby County in December 2020 - \$1.034 million**

ROAD & BRIDGE CAPITAL IMPROVEMENTS



Existing Approach



Upgraded Approach

Westervelt Railroad Crossing – 100% funded - \$347K



Existing Approach



Upgraded Approach

Clarksburg Railroad Crossing – 100% Funded - \$105K

ROAD & BRIDGE CAPITAL IMPROVEMENTS



New Bridge



New Bridge

Ash Grove/Big Spring Bridge Replacement (Closed Bridge)

- Location: On the Township Line 3 miles East of Village of Strasburg
- Awarded Construction Contract: \$546,988



Existing Bridge



New Bridge

Windsor Bridge Replacement (3 Ton Posted)

- Location: 2.5 miles North of City of Windsor
- Awarded Construction Contract: \$224,688

ROAD & BRIDGE CAPITAL IMPROVEMENTS



Under Construction



New Bridge

Prairie Bridge Replacement (Closed Bridge)

- Location: 3 miles Northwest of Village of Stewardson
- Awarded Construction Contract: \$326,288

MAINTENANCE OF COUNTY HIGHWAYS



Making Cold Mix at County Highway Department

MAINTENANCE OF COUNTY HIGHWAYS



Preparing Dollville County Highway



Patching Tower-Hill/Moweaqua County Highway

Repairing Dollville County Highway and Tower-Hill/Moweaqua County Highway



Striping Tower-Hill/Moweaqua County Highway



Shoulder Repair along the Windsor County Highway

MAINTENANCE OF COUNTY HIGHWAYS



Existing Intersection



Upgraded Intersection

Improvements to Blue Star County Highway at Duval Corner



Repair Equipment by County Highway Personnel



Joint Repair of Findlay-Assumption County Highway (milling)

MAINTENANCE OF COUNTY HIGHWAYS



Guardrail Repair along Tower-Hill/Herrick County Highway



Ditch Cleaning & Tree Removal along Sigel County Highway

AID TO TOWNSHIPS AND MUNICIPALITIES



Existing Box



New Pipe

Drainage Structure Replacement in Ridge Township



Existing Structure



New Pipe

Drainage Structure Replacement in Richland Township

AID TO TOWNSHIPS AND MUNICIPALITIES



Existing Pipe



New Pipe

Drainage Structure Replacement in Prairie Township



Existing Pipe



New Pipe

Drainage Structure Replacement in Ash Grove Township

AID TO TOWNSHIPS AND MUNICIPALITIES



Existing Washed out Structure



New Pipe

Drainage Structure Emergency Replacement in Penn Township



Existing Pipe



New Pipe

Drainage Structure Replacement in Lakewood Township

AID TO TOWNSHIPS AND MUNICIPALITIES



Existing Collapsed Structure



New Pipe

Drainage Structure Replacement in Clarksburg Township



Existing Structure



New Pipe

Drainage Structure Replacement in Windsor Township

AID TO TOWNSHIPS AND MUNICIPALITIES



Existing Pipe



New Pipe

Drainage Structure Replacement in Pickaway Township

Other Support Services for County Departments:

- Animal Control Dept.: Burial of dogs

Road & Bridge Committee Meeting Minutes

- **Date and Time of Meeting:** January 11, 2021; 9am
- **Location of Meeting:** Shelby County Highway Department
1590 State Highway 16
Shelbyville, Illinois 62565
- **Roll Call:** Bryon Coffman, Jesse Durbin, Robert Simpson
 - Also in attendance: Alan Spesard
- **Approval of Last Month's Minutes**
 - **Committee recommended approval**
- **Financial Review**
- **Review Claims**
 - **Committee recommended approval**
- **New Business:**
 - Resolution for Cowden-Herrick Road upgrade funding
 - Committee recommended approval
 - Agreement with IDOT on Cowden Herrick Road upgrade funding
 - Committee recommended approval
 - Agreement with Hampton, Lenzi and Renwick Inc. to provide construction engineering support for the Cowden-Herrick Road upgrade project
 - Committee recommended approval
 - Agreement with Civil Design, Inc. to provide engineering design to replace drainage structure in Prairie Township
 - Committee recommended approval
 - Updated project list and bridge status – attached
 - Duval Corner (County Highway #5) box culvert replacement open to traffic, finish in Spring 2021
 - Oil Bid for Townships and County on February 5, 2021
 - Cold Mix Bid on February 5, 2021
 - Rock and Rock hauling for a few Townships on February 5, 2021
 - Submitted Certificates of Compliance reports to IDOT Auditors for MFT and Township Bridge Program for Townships and County
 - Bridge Inspections to begin in February and end in March for west half of County – 88 bridges
 - Salt Storage Shed approval from FAA
 - 3 month budget review
 - County Audit has begun
 - Bryon Coffman will ask States Attorney about allowing road trip being part of this committee.
- **Old Business:**
 - Review snow plow policy; Contacted Christian, Cumberland and Fayette County for their policy – they do not have a written policy but they do same as us.
 - Sherriff Department has requested fuel tank to be installed at highway department because they are having issues with their current filling stations.
 - Request to install cable for security camera's to help save costs
 - Tabled at December County Board Meeting
 - Multiple requests for bridge replacements of bridges that had been put on hold:
 - K. Barr request to replace closed bridge in Herrick Township: Tony Smith signed petition 087- 3062
 - Chris Tabbert signed petition to replace closed bridge in Prairie Township 087- 3209

Road & Bridge Committee Meeting Minutes

- Don Simpson signed petition to replace closed bridge in Cold Spring Township 087-3231
 - Sigel Highway Commissioner requesting replacement of bridge on township line with Prairie 087-3225 posted 10 ton
 - Richland Highway Commissioner requesting replacement of closed bridge on township line with Prairie 087-3186
-
- **Adjournment:** Next meetings February 5 and 8, 2021 at 9:00 am

ENGINEERING PROJECT LIST

December 3, 2020

1. Construction Oversight Projects:

- a. Windsor Township bridge: Open to Traffic; IDOT audit need material certifications
- b. Ash Grove/Big Spring Township Bridge: Open to Traffic; Final document & IDOT audit
- c. Prairie Bridge: Open to Traffic, Final Documentation and IDOT audit
- d. Clarksburg Railroad Crossing Approach: Open to Traffic, Final invoice to IDOT
- e. Westervelt Railroad Crossing Approach: Open to Traffic, complete in Spring 2021

2. Design Projects in progress:

- a. Cowden-Herrick Road: Design in-house; Submit Draft Plans in October; Received IDOT approval for FY 2021; Scheduled for March 2021 Bid
- b. Country Club Road: Design in-house; Project Report approved; Acquire ROW and bid in November 2021 or January 2022
- c. Findlay-Bethany Road: Design in-house; Programmed for FY 2025 construction
- d. Todds Point Railroad Crossing Approach 2250N: Design in-House; Received Stipulated Agreement from ICC for signature; Bid in June 2021
- e. Westervelt County Highway Bridge 087-3016: Consulting Engineering Firm; Acquire ROW and bid in September 2021
- f. Rural Township Bridge 087-3304: Consulting Engineering Firm; Programmed for FY 2024 construction
- g. Flat Branch Township Bridge 087-3101: Consulting Engineering Firm; Bid in April 2021
- h. Rose Township Bridge 087-3135: Consulting Engineering Firm; Bid in June 2021
- i. Shelbyville Township Bridge 087-3337: Consulting Engineering Firm; Programmed for FY 2023 construction
- j. Ridge Township Bridge 087-3120: Consulting Engineering Firm; Programmed for FY 2023 construction
- k. Ash Grove/Big Spring Township Bridge 087-3038: Consulting Engineering Firm; Programmed for FY 2024 construction
- l. Oconee Township Bridge 087-3236: Consulting Engineering Firm; Programmed for FY 2025 construction
- m. Clarksburg Bridge – 087-3198; Approved by Co. Board in November 2020
- n. Moweaqua Road Bridge – 087-3000 Rebuild Illinois Funds; Approved by Co. Board in November 2020
- o. Okaw RRxing approach 1975E: Design in-house

3. Miscellaneous Engineering Projects:

- a. Bridge Inspections: In-House inspections; Required by Federal Law
- b. Cross-Sections for over 300 Bridges: New IDOT requirement
- c. Right-Of-Way Plats and appraisals: Required to acquire easements for bridge and road projects
- d. Drainage Structure Highway Commissioner 50/50 Petitions: Construction by in-house Day Labor
- e. Inspection/GIS of township culverts: Consulting Engineering Firm
- f. Grant Application submitted in June for Federal Land Access Program
- g. Administer Township MFT and Rebuild Illinois programs – approve budgets; bid maintenance materials; provide advice to Highway Commissioners,

ENGINEERING PROJECT LIST

December 3, 2020

4. Pending Projects:

- a. Prairie 2725E – Rebuild Illinois
- b. Richland Township Bridge 087-3186: requested by Richland Highway Commissioner
- c. Prairie/Sigel Bridge 087-3225 requested by Sigel Highway Commissioner
- d. Prairie Bridge – 087-3209 Requested by Prairie Highway Commissioner
- e. Herrick Bridge – 087-3062 Requested by Herrick Highway Commissioner
- f. Cold Spring Bridge – 087-3231 Requested by Cold Spring Highway Commissioner

Health Dept 1-12/2021

Lynn Williams

Time 10:00

Jesse Durbin

Jury Room

Thomitt Boor

Lynn Williams motion to accept bills as
preceded

2nd Jesse Durbin

Pass

Jesse Durbin motion to Adjourn
2nd Lynn Williams

Pass

FILED

JAN 12 2021

Jenna Cox

SHELBY COUNTY CLERK

Lees & Salary
Jan 12, 2021

Barbara Bennett
9:00 - 10:04 AM

Claims were submitted & checked.

FILED
JAN 12 2021

Jessie Cox
SHELBY COUNTY CLERK

Purchasing Committee

1-12-2021

Time 9:00 AM
Court Room B

[REDACTED]
[REDACTED]
[REDACTED]

Terry Metzger Motion to pay
bills as presented
2nd Kenny Born
Pass

Kenny Born Motion to Adjourn
2nd Terry Metzger

Pass

FILED

JAN 12 2021

Jessica Fox

SHELBY COUNTY CLERK

Law Enforcement Committee

Meeting Agenda January 7, 2021 & Meeting Minutes

The meeting was called to order at 9:00a.m. with the following present: Sheriff Don Koonce, Undersheriff Sean McQueen, SrSgt. Jeffrey Wood, States Attorney Nichole Kroncke, Gary Patterson, Bob Simpson, Denny Drnjevic, John Pogue and Derek Pearcy

1. Approval of minutes of December Meeting

-A motion to approve the minutes of the December meeting was made by Bob Simpson and was seconded by Gary Patterson with all in favor during vote.

2. Cures Finding

-Discussion on the matter. Undersheriff McQueen reported the county had already received in excess of \$404,000 from this program. There is currently \$21,000 (estimated) in claims submitted and are expected to be approved. Most of the claims submitted were from the sheriff's office by using employee salary but, any department who had submitted their claims to Undersheriff McQueen had been submitted for approval. Undersheriff McQueen reported he was assisted with this program by the County Treasurer and County Clerk and he thanked them for their work on this program. Undersheriff McQueen stated once all the approvals which he submitted are approved, the county would have attained all the money allotted for Shelby County for this program.

3. Deputy Applications

-Undersheriff McQueen reported there were currently 2 applications so far for the new Deputy Eligibility List. Sheriff reported Stephen Thompson had had announced his resignation from the Deputies' Merit Commission on 01/06/21. Undersheriff McQueen was instructed to inform the County Clerk to place on the January Board Meeting Agenda two new recommendations for appointment to the Commission. The names of the recommendations would be given to the County Clerk in time to be placed onto the Agenda. The creation of the new Deputy Eligibility List would be placed on hold until these appointments were approved.

4. Gas Tank

-Discussion of the matter. After looking at the numbers provided, it would be .20 to .30 cheaper, for the sheriff's office's to have a gas tank as opposed to using the WEX gas card but, because the WEX program is free to participate in, it would benefit the sheriff's office and citizens of the county to use the WEX gas card in conjunction

with the gas tank. This would allow sheriff's office vehicles to be fueled all around the county and also while outside the county on business, the employees would have a means to fuel the vehicles. Sheriff reported the sheriff's office in the process of applying for the WEX gas card. Gary Patterson stated he would be contacting the County Clerk to have the approval for the lowest gas tank bid to be approved and the use of the WEX gas card to be on the Agenda for the January County Board Meeting.

5. Surplus Vehicles

-Sheriff Koonce reported the sheriff's office will be having two vehicles retired. The Sheriff would be in contact with the States Attorney to complete the required process to declare them as Surplus vehicles. Undersheriff McQueen spoke about possible grant funding for future vehicle(s) but, stated it would be at least a 2 year waiting period if the grant was approved.

6. Employee Injury

-Undersheriff McQueen reported an employee had fallen at the sheriff's office and had been treated at Good Shepherd Hospital. The employee is back to at work after the incident. The employee was spoken with about why the fall had occurred.

7. Review Expenditures

-Committee Reviewed Expenditures

Denny Drnjevic thanked the employees of the Sheriff's Office for their work while he was a member of the Law Enforcement Committee. Gary Patterson and Bob Simpson agreed with Denny's statements.

There was a Motion to Adjourn the Meeting by Bob Simpson and Seconded by Denny Drnjevic with all in favor during vote.

Meeting Adjourned at 11:20am.

C.E.F.S. Economic Opportunity Corporation

"Community Action Agency"



1805 S. Banker Street, P.O. Box 928
Effingham, Illinois 62401-0928
PHONE: (217) 342-2193 ~ FAX: (217) 342-4701
E-MAIL: cefs@cefseoc.org
WEBSITE: www.cefseoc.org

KEVIN BUSHUR
Chief Executive Officer

December 2, 2020

TO: Jessica Fox
Shelby County Clerk
301 E. Main
PO Box 320
Shelbyville, IL 62565

FROM: John Gillmore
Program Manager
1805 S. Banker St.
Effingham, IL 62041

Enclosed is a copy of the Shelby County November PCOM report to share with your board members. Please contact me at 217-342-2193 ext. 161 or by e-mail at jgillmore@cefseoc.org if there are any questions.


John Gillmore
Program Manager

Enclosures

EQUAL OPPORTUNITY EMPLOYER

FILED
DEC 28 2020


SHELBY COUNTY CLERK

Daily Management Statistics Report

C.E.F.S. Eco. Opp. Corp.

11/01/2020 - 11/30/2020

Shelby

Days of Service:	20
Invoice Revenue:	\$2,962.04
Fares Collected:	\$113.00
Total Revenue:	\$3,075.04
ServiceMiles:	6796
Non-Service/Admin Miles:	1,267
Service Hours:	426.54999
NonService Hours:	3.0
Total Billable Riders:	809
Average Revenue Per Ride:	\$3.80
Average Miles Per Ride:	8.4
Average Hours Per Ride:	0.5273
Average Rides Per Day:	40.5
Average Service Miles Per Day:	339.8
Average Service Hours Per Day:	21.3
Average Revenue Per Day:	\$153.75
Total Passenger Trips	809
NonBillable No Shows:	5
Rider Cancels:	121
Subscription Rides:	323
Demand Rides:	486
Immediate Rides:	19
In Area Rides:	809
Out of Area Rides:	0
In County Rides:	809
Out of County Rides:	0
Unduplicated Riders:	35
Denied Rides:	1
Ambulatory Rides:	799
Non Ambulatory Rides:	10
Accidents:	0
Breakdowns:	0
Wait Hours:	0.0
Escort Hours:	0.0
Trainee Hours:	0.0
Fuel Cost:	\$1,332.88
Gallons Fuel:	597.7
Fuel Cost Per Gallon	\$2.23

FILED
DEC 28 2020

James [Signature]
SHELBY COUNTY CLERK

C.E.F.S./Central Illinois Public Transit
Grant Recipient Monthly Monitoring Outcome Report

Shelby County

Hours of Service for Shelby County Transportation are 6:00 A.M. to 6:00 P.M.													
Monitoring Indexes	Jul-21	Aug-21	Sep-21	Oct-21	Nov-21	Dec-21	Jan-21	Feb-21	Mar-21	Apr-21	May-21	Jun-21	Total
Number of Days of Service	23	21	22	22	20								108
Number of Trips	418	823	1,167	1,068	809								4,285
Number of Vehicles	2	14	11	11	16								2,100
Revenue Vehicle Hours	314	406	476	477	427								3,106
Revenue Vehicle Miles	5,180	6,034	6,356	6,696	6,796								31,062
DOAP Revenues													\$0
5311 Revenues													\$0
Contract Revenues		\$2,112	\$4,319	\$712	\$6,895								\$14,038
Fares	\$154	\$200	\$872	\$204	\$261								\$1,691
System Expenses	\$13,657	\$19,123	\$20,297	\$22,130	\$20,265								\$95,472
Net Revenues	-\$13,503	-\$16,811	-\$15,106	-\$21,214	-\$13,109	\$0	\$0	\$0	\$0	\$0	\$0	\$0	-\$79,743
Ridership	30	25	36	33	35								159
Trip Denials	0	0	1	1	1								3
Trip Denied but Provided	0	0	0	0	0								0
Cost per Trip	\$32.67	\$23.24	\$17.39	\$20.72	\$25.05	\$0.00	\$0.00	\$0.00	\$0.00	\$0.00	\$0.00	\$0.00	\$22.28
Cost per Hour	\$43.49	\$47.10	\$42.64	\$46.39	\$47.46	\$0.00	\$0.00	\$0.00	\$0.00	\$0.00	\$0.00	\$0.00	\$45.46
Cost per Mile	\$2.64	\$3.17	\$3.19	\$3.30	\$2.98	\$0.00	\$0.00	\$0.00	\$0.00	\$0.00	\$0.00	\$0.00	\$3.07
Maintenance of Vehicles	3	3	5	6	5								22
Maintenance of Facilities	0	0	0	0	0								0
New Service Contracts	0	0	0	0	0								0
Overtime Hours	9	7	19	16	24								75
Complaints	0	0	0	0	0								0
Vehicle Accidents	0	0	0	0	0								0
Mobility Index Outcomes/Efforts	0.019	0.037	0.052	0.048	0.036	0.000	0.000	0.000	0.000	0.000	0.000	0.000	0.192
Annualized Mobility Index	0.224	0.333	0.431	0.466	0.460	0.383	0.328	0.287	0.255	0.230	0.209	0.192	
(Note - Annual Goal is .69)													
2010 Census Rural Population													
Shelby County	22,363												

232

Law Enforcement Committee Meeting Agenda

January 7, 2021 at 9:00 a.m.

Shelby Co. Sheriff's Office

1. Approval of Minutes of December Meeting
2. Cures Funding
3. Deputy Applications
4. Gas tank
5. Surplus Vehicles
6. Employee Injury
7. Review Expenditures

Animal Control

In Attendance:

Robert Simpson
Stanley Spesard

Brad Hudson
Terry Metzger

Committee met and approved Animal Control spending for month.

Animal Control would like to be included in getting gas with Sheriff's department at County Highway Dept.

Motion to adjourn at 9:58.

FILED

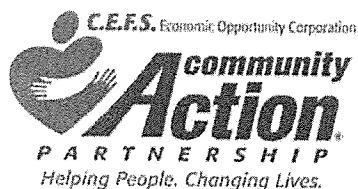
DEC 30 2020

Jenna Cox

SHELBY COUNTY CLERK

C.E.F.S. Economic Opportunity Corporation

"Community Action Agency"



1805 S. Banker Street, P.O. Box 928
Effingham, Illinois 62401-0928
PHONE: (217) 342-2193 ~ FAX: (217) 342-4701
E-MAIL: cefs@cefseoc.org
WEBSITE: www.cefseoc.org

KEVIN BUSHUR
Chief Executive Officer


December 2, 2020

TO: Shelby County Representative
Shelby County PCOM
315 ½ E. Main Street
Shelbyville, IL 62565


FROM: John Gillmore
Program Manager
1805 S. Banker St.
Effingham, IL 62041

During the month of November, Nathan Nichols, Mobility Manager Nathan took part in various meetings. 11/5 HSHS Community Outreach Virtual Event/Zoom. 11/17 Webinar Safe Fleet-Strategies for Rebuilding-Primary discussion on sanitizing buses and best way to document that. Relay that to customers in hope of boosting ridership. 11/18 Trifolds given out to Christian Outreach to send out in their mailings. Marketing efforts such as fliers, information, and advertising to different locations.

Included in the attachment is a copy of the November PCOM report to share with your board members. Please contact me at 217-342-2193 ext. 161 or by e-mail at jgillmore@cefseoc.org if there are any questions.


John Gillmore
Program Manager

Enclosures

FILED
DEC 22 2020

SHELBY COUNTY CLERK

EQUAL OPPORTUNITY EMPLOYER

C.E.F.S./Central Illinois Public Transit

Grant Recipient Monthly Monitoring Outcome Report

Combined Report for Shelby County Transportation Project

Hours of Service for Transportation for All Counties are 6:00 A.M. to 6:00 P.M.

[illegible][illegible]

2010 Census Rural Population	EXPENSES	5311	DOAP
Shelby County	22,363	#DIV/0!	#DIV/0!
Moultrie County	14,846	#DIV/0!	#DIV/0!
Montgomery County	30,104	#DIV/0!	#DIV/0!
Fayette County	22,140	#DIV/0!	#DIV/0!
Christian County	34,800	#DIV/0!	#DIV/0!
Clay County	13,815	#DIV/0!	#DIV/0!
Total Population	138,068	#DIV/0!	#DIV/0!

County	Total Population	#DIV/0!	#DIV/0!	#DIV/0!	#DIV/0!
Chaff County	13,612	138,068	-	-	-

C.E.F.S./Central Illinois Public Transit													
Grant Recipient Monthly Monitoring Outcome Report													
Christian County													
Hours of Service for Christian County Transportation are 6:00 A.M. to 6:00 P.M.													
Monitoring Indexes	Jul-21	Aug-21	Sep-21	Oct-21	Nov-21	Dec-21	Jan-21	Feb-21	Mar-21	Apr-21	May-21	Jun-21	Total
Number of Days of Service	23	21	22	22	20								108
Number of Trips	276	283	268	337	318								1,482
Number of Vehicles	3	6	6	4	6								
Revenue Vehicle Hours	349	338	319	350	284								1,640
Revenue Vehicle Miles	2,637	710	3,269	3,850	3,750								14,216
DOAP Revenues													\$0
5311 Revenues													\$0
Contract Revenues	\$1,250												\$1,250
Fares	\$269	\$237	\$184	\$304	\$180								\$1,174
System Expenses	\$13,773	\$15,036	\$13,414	\$16,357	\$12,702								\$71,282
Net Revenues	-\$12,254	-\$14,799	-\$13,230	-\$16,053	-\$12,522	\$0	\$0	\$0	\$0	\$0	\$0	\$0	-\$68,858
Ridership	22	23	24	29	26								124
Trip Denials	1	0	1	2	3								7
Trip Denied but Provided	0	0	0	0	0								0
Cost per Trip	\$49.90	\$53.13	\$50.05	\$48.54	\$39.94	\$0.00	\$0.00	\$0.00	\$0.00	\$0.00	\$0.00	\$0.00	\$48.10
Cost per Hour	\$39.46	\$44.49	\$42.05	\$46.73	\$44.73	\$0.00	\$0.00	\$0.00	\$0.00	\$0.00	\$0.00	\$0.00	\$43.46
Cost per Mile	\$5.22	\$21.18	\$4.10	\$4.25	\$3.39	\$0.00	\$0.00	\$0.00	\$0.00	\$0.00	\$0.00	\$0.00	\$5.01
Maintenance of Vehicles	3	3	2	8	1								17
Maintenance of Facilities	0	0	0	0	0								0
New Service Contracts	0	0	0	0	0								0
Overtime Hours	10	6	13	12	16								57
Complaints	0	0	0	0	0								0
Vehicle Accidents	0	0	0	0	0								0
Mobility Index Outcomes/Efforts	0.008	0.008	0.008	0.010	0.009	0.000	0.000	0.000	0.000	0.000	0.000	0.000	0.043
Annualized Mobility Index	0.095	0.096	0.095	0.100	0.102	0.085	0.073	0.064	0.057	0.051	0.046	0.043	
(Note - Annual Goal is .69)													
2010 Census Rural Population													
Christian County	34,800												

C.E.F.S./Central Illinois Public Transit													
Grant Recipient Monthly Monitoring Outcome Report													
Clay County													
Hours of Service for Clay County Transportation are 6:00 A.M. to 6:00 P.M.													
Monitoring Indexes	Jul-21	Aug-21	Sep-21	Oct-21	Nov-21	Dec-21	Jan-21	Feb-21	Mar-21	Apr-21	May-21	Jun-21	Total
Number of Days of Service	23	21	22	22	20								108
Number of Trips	237	272	503	523	412								1,947
Number of Vehicles	8	8	7	6	9								
Revenue Vehicle Hours	335	313	466	475	423								2,012
Revenue Vehicle Miles	3,300	3,091	5,523	5,564	5,282								22,760
DOAP Revenues													\$0
5311 Revenues													\$0
Contract Revenues		\$148	\$1,520	\$1,495	\$371								\$3,534
Fares	\$229	\$364	\$298	\$381	\$229								\$1,501
System Expenses	\$13,594	\$13,856	\$19,768	\$21,810	\$18,770								\$87,798
Net Revenues	-\$13,365	-\$13,344	-\$17,950	-\$19,934	-\$18,170	\$0	\$0	\$0	\$0	\$0	\$0	\$0	-\$82,763
Ridership	35	34	32	33	26								160
Trip Denials	1	5	1	2	3								12
Trip Denied but Provided	0	0	0	0	0								0
Cost per Trip	\$57.36	\$50.94	\$39.30	\$41.70	\$45.56	\$0.00	\$0.00	\$0.00	\$0.00	\$0.00	\$0.00	\$0.00	\$45.09
Cost per Hour	\$40.58	\$44.27	\$42.42	\$45.92	\$44.37	\$0.00	\$0.00	\$0.00	\$0.00	\$0.00	\$0.00	\$0.00	\$43.64
Cost per Mile	\$4.12	\$4.48	\$3.58	\$3.92	\$3.55	\$0.00	\$0.00	\$0.00	\$0.00	\$0.00	\$0.00	\$0.00	\$3.86
Maintenance of Vehicles	0	2	4	11	5								22
Maintenance of Facilities	0	0	0	0	0								0
New Service Contracts	0	1	0	0	0								1
Overtime Hours	9	5	19	16	24								73
Complaints	0	0	0	0	0								0
Vehicle Accidents	0	0	0	0	0								0
Mobility Index Outcomes/Efforts	0.017	0.020	0.036	0.038	0.030	0.000	0.000	0.000	0.000	0.000	0.000	0.000	0.141
Annualized Mobility Index	0.206	0.221	0.293	0.333	0.338	0.282	0.242	0.211	0.188	0.169	0.154	0.141	
(Note - Annual Goal is .69)													

C.E.F.S./Central Illinois Public Transit Grant Recipient Monthly Monitoring Outcome Report Fayette County

[illegible]

C.E.F.S./Central Illinois Public Transit													
Grant Recipient Monthly Monitoring Outcome Report													
Montgomery County													
Hours of Service for Montgomery County Transportation are 6:00 A.M. to 6:00 P.M.													
Monitoring Indexes	Jul-21	Aug-21	Sep-21	Oct-21	Nov-21	Dec-21	Jan-21	Feb-21	Mar-21	Apr-21	May-21	Jun-21	Total
Number of Days of Service	23	21	22	22	20								108
Number of Trips	460	384	410	334	286								1,874
Number of Vehicles	6	10	7	10	9								
Revenue Vehicle Hours	451	368	403	349	288								1,859
Revenue Vehicle Miles	6,236	5,067	5,179	4,624	3,923								25,029
DOAP Revenues													\$0
5311 Revenues													\$0
Contract Revenues	\$500			\$342	-\$92								\$750
Fares	\$248	\$292	\$312	\$250	\$188								\$1,290
System Expenses	\$18,953	\$17,458	\$17,166	\$16,258	\$13,021								\$82,856
Net Revenues	-\$18,205	-\$17,166	-\$16,854	-\$15,666	-\$12,925	\$0	\$0	\$0	\$0	\$0	\$0	\$0	-\$80,816
Ridership	50	48	56	45	40								239
Trip Denials	6	1	3	14	4								28
Trip Denied but Provided	0	0	0	0	0								0
Cost per Trip	\$41.20	\$45.46	\$41.87	\$48.68	\$45.53	\$0.00	\$0.00	\$0.00	\$0.00	\$0.00	\$0.00	\$0.00	\$44.21
Cost per Hour	\$42.02	\$47.44	\$42.60	\$46.58	\$45.21	\$0.00	\$0.00	\$0.00	\$0.00	\$0.00	\$0.00	\$0.00	\$44.57
Cost per Mile	\$3.04	\$3.45	\$3.31	\$3.52	\$3.32	\$0.00	\$0.00	\$0.00	\$0.00	\$0.00	\$0.00	\$0.00	\$3.31
Maintenance of Vehicles	4	4	6	4	1								19
Maintenance of Facilities	0	0	0	0	0								0
New Service Contracts	0	0	0	0	0								0
Overtime Hours	12	6	16	12	16								62
Complaints	0	0	0	0	0								0
Vehicle Accidents	0	0	0	0	0								0
Mobility Index Outcomes/Efforts	0.015	0.013	0.014	0.011	0.010	0.000	0.000	0.000	0.000	0.000	0.000	0.000	0.062
Annualized Mobility Index	0.183	0.168	0.167	0.158	0.149	0.125	0.107	0.093	0.083	0.075	0.068	0.062	
(Note - Annual Goal is .69)													

C.E.F.S./Central Illinois Public Transit													
Grant Recipient Monthly Monitoring Outcome Report													
Moultrie County													
Hours of Service for Moultrie County Transportation are 6:00 A.M. to 6:00 P.M.													
Monitoring Indexes	Jul-21	Aug-21	Sep-21	Oct-21	Nov-21	Dec-21	Jan-21	Feb-21	Mar-21	Apr-21	May-21	Jun-21	Total
Number of Days of Service	22	21	21	21	19								104
Number of Trips	156	542	845	864	699								3,106
Number of Vehicles	4	4	2	3	3								
Revenue Vehicle Hours	277	287	288	286	248								1,386
Revenue Vehicle Miles	1,873	2,386	2,230	1,811	2,042								10,342
DOAP Revenues													\$0
5311 Revenues													\$0
Contract Revenues		\$601	\$437	-\$15	\$494								\$0
Fares	\$223	\$275	\$105	\$376	\$288								\$1,517
System Expenses	\$10,619	\$12,250	\$11,480	\$12,343	\$10,475								\$1,267
Net Revenues	-\$10,396	-\$11,374	-\$10,938	-\$11,982	-\$9,693	\$0	\$0	\$0	\$0	\$0	\$0	\$0	\$57,167
Ridership	23	26	27	23	23								122
Trip Denials	0	0	0	0	1								1
Trip Denied but Provided	0	0	0	0	0								0
Cost per Trip	\$68.07	\$22.60	\$13.59	\$14.29	\$14.99	\$0.00	\$0.00	\$0.00	\$0.00	\$0.00	\$0.00	\$0.00	\$18.41
Cost per Hour	\$38.34	\$42.68	\$39.86	\$43.16	\$42.24	\$0.00	\$0.00	\$0.00	\$0.00	\$0.00	\$0.00	\$0.00	\$41.25
Cost per Mile	\$5.67	\$5.13	\$5.15	\$6.82	\$5.13	\$0.00	\$0.00	\$0.00	\$0.00	\$0.00	\$0.00	\$0.00	\$5.53
Maintenance of Vehicles	1	1	1	2	1								6
Maintenance of Facilities	0	0	0	0	0								0
New Service Contracts	0	0	0	0	0								0
Overtime Hours	8	5	12	9	14								48
Complaints	0	0	0	0	0								0
Vehicle Accidents	0	0	0	0	0								0
Mobility Index Outcomes/Efforts	0.011	0.037	0.057	0.058	0.047	0.000	0.000	0.000	0.000	0.000	0.000	0.000	0.209
Annualized Mobility Index	0.126	0.282	0.416	0.486	0.502	0.418	0.359	0.314	0.279	0.251	0.228	0.209	
(Note - Annual Goal is .69)													
2010 Census Rural Population													
Moultrie County	14,846												

C.E.F.S./Central Illinois Public Transit													
Grant Recipient Monthly Monitoring Outcome Report													
Shelby County													
Hours of Service for Shelby County Transportation are 6:00 A.M. to 6:00 P.M.													
Monitoring Indexes	Jul-21	Aug-21	Sep-21	Oct-21	Nov-21	Dec-21	Jan-21	Feb-21	Mar-21	Apr-21	May-21	Jun-21	Total
Number of Days of Service	23	21	22	22	20								108
Number of Trips	418	823	1,167	1,068	809								4,285
Number of Vehicles	2	14	11	11	16								
Revenue Vehicle Hours	314	406	476	477	427								2,100
Revenue Vehicle Miles	5,180	6,034	6,356	6,696	6,796								31,062
DOAP Revenues													\$0
5311 Revenues													\$0
Contract Revenues		\$2,112	\$4,319	\$712	\$6,895								\$14,038
Fares	\$154	\$200	\$872	\$204	\$261								\$1,691
System Expenses	\$13,657	\$19,123	\$20,297	\$22,130	\$20,265								\$95,472
Net Revenues	-\$13,503	-\$16,811	-\$15,106	-\$21,214	-\$13,109	\$0	\$0	\$0	\$0	\$0	\$0	\$0	-\$79,743
Ridership	30	25	36	33	35								159
Trip Denials	0	0	1	1	1								3
Trip Denied but Provided	0	0	0	0	0								0
Cost per Trip	\$32.67	\$23.24	\$17.39	\$20.72	\$25.05	\$0.00	\$0.00	\$0.00	\$0.00	\$0.00	\$0.00	\$0.00	\$22.28
Cost per Hour	\$43.49	\$47.10	\$42.64	\$46.39	\$47.46	\$0.00	\$0.00	\$0.00	\$0.00	\$0.00	\$0.00	\$0.00	\$45.46
Cost per Mile	\$2.64	\$3.17	\$3.19	\$3.30	\$2.98	\$0.00	\$0.00	\$0.00	\$0.00	\$0.00	\$0.00	\$0.00	\$3.07
Maintenance of Vehicles	3	3	5	6	5								22
Maintenance of Facilities	0	0	0	0	0								0
New Service Contracts	0	0	0	0	0								0
Overtime Hours	9	7	19	16	24								75
Complaints	0	0	0	0	0								0
Vehicle Accidents	0	0	0	0	0								0
Mobility Index Outcomes/Efforts	0.019	0.037	0.052	0.048	0.036	0.000	0.000	0.000	0.000	0.000	0.000	0.000	0.192
Annualized Mobility Index	0.224	0.333	0.431	0.466	0.460	0.383	0.328	0.287	0.255	0.230	0.209	0.192	
(Note - Annual Goal is .69)													
2010 Census Rural Population													
Shelby County	22,363												

Daily Management Statistics Report

C.E.F.S. Eco. Opp. Corp.

11/01/2020 - 11/30/2020

Christian

Days of Service:	20
Invoice Revenue:	\$115.41
Fares Collected:	\$105.00
Total Revenue:	\$220.41
Service Miles:	3750
Non-Service/Admin Miles:	1,267
Service Hours:	284.21668
NonService Hours:	3.0
Total Billable Riders:	318
Average Revenue Per Ride:	\$0.69
Average Miles Per Ride:	11.8
Average Hours Per Ride:	0.8938
Average Rides Per Day:	15.9
Average Service Miles Per Day:	187.5
Average Service Hours Per Day:	14.2
Average Revenue Per Day:	\$11.02
Total Passenger Trips	318
NonBillable No Shows:	7
Rider Cancels:	70
Subscription Rides:	111
Demand Rides:	207
Immediate Rides:	15
In Area Rides:	318
Out of Area Rides:	0
In County Rides:	318
Out of County Rides:	0
Unduplicated Riders:	26
Denied Rides:	3
Ambulatory Rides:	292
Non Ambulatory Rides:	26
Accidents:	0
Breakdowns:	0
Wait Hours:	0.0
Escort Hours:	0.0
Trainee Hours:	0.0
Fuel Cost:	\$860.48
Gallons Fuel:	353.7
Fuel Cost Per Gallon	\$2.43

Daily Management Statistics Report

C.E.F.S. Eco. Opp. Corp.

11/01/2020 - 11/30/2020

Clay

Days of Service:	20
Invoice Revenue:	\$1,431.19
Fares Collected:	\$219.00
Total Revenue:	\$1,650.19
Service Miles:	5282
Non-Service/Admin Miles:	1,267
Service Hours:	422.63330
NonService Hours:	3.0
Total Billable Riders:	412
Average Revenue Per Ride:	\$4.01
Average Miles Per Ride:	12.8
Average Hours Per Ride:	1.0258
Average Rides Per Day:	20.6
Average Service Miles Per Day:	264.1
Average Service Hours Per Day:	21.1
Average Revenue Per Day:	\$82.51
Total Passenger Trips	412
NonBillable No Shows:	3
Rider Cancels:	98
Subscription Rides:	286
Demand Rides:	126
Immediate Rides:	12
In Area Rides:	412
Out of Area Rides:	0
In County Rides:	412
Out of County Rides:	0
Unduplicated Riders:	26
Denied Rides:	3
Ambulatory Rides:	381
Non Ambulatory Rides:	31
Accidents:	0
Breakdowns:	0
Wait Hours:	0.0
Escort Hours:	0.0
Trainee Hours:	0.0
Fuel Cost:	\$1,246.85
Gallons Fuel:	577.4
Fuel Cost Per Gallon	\$2.16

Daily Management Statistics Report

C.E.F.S. Eco. Opp. Corp.

11/01/2020 - 11/30/2020

Fayette

Days of Service:	19
Invoice Revenue:	\$2,642.00
Fares Collected:	\$36.00
Total Revenue:	\$2,678.00
ServiceMiles:	3680
Non-Service/Admin Miles:	1,267
Service Hours:	230.24999
NonService Hours:	3.0
Total Billable Riders:	604
Average Revenue Per Ride:	\$4.43
Average Miles Per Ride:	6.1
Average Hours Per Ride:	0.3812
Average Rides Per Day:	31.8
Average Service Miles Per Day:	193.7
Average Service Hours Per Day:	12.1
Average Revenue Per Day:	\$140.95
Total Passenger Trips	604
NonBillable No Shows:	11
Rider Cancels:	109
Subscription Rides:	114
Demand Rides:	490
Immediate Rides:	10
In Area Rides:	604
Out of Area Rides:	0
In County Rides:	604
Out of County Rides:	0
Unduplicated Riders:	26
Denied Rides:	4
Ambulatory Rides:	594
Non Ambulatory Rides:	10
Accidents:	0
Breakdowns:	0
Wait Hours:	0.0
Escort Hours:	0.0
Trainee Hours:	0.0
Fuel Cost:	\$790.54
Gallons Fuel:	358.5
Fuel Cost Per Gallon	\$2.21

Daily Management Statistics Report

C.E.F.S. Eco. Opp. Corp.

11/01/2020 - 11/30/2020

Montgomery

Days of Service:	20
Invoice Revenue:	\$211.80
Fares Collected:	\$51.00
Total Revenue:	\$262.80
ServiceMiles:	3923
Non-Service/Admin Miles:	1,267
Service Hours:	288.15000
NonService Hours:	3.0
Total Billable Riders:	286
Average Revenue Per Ride:	\$0.92
Average Miles Per Ride:	13.7
Average Hours Per Ride:	1.0075
Average Rides Per Day:	14.3
Average Service Miles Per Day:	196.2
Average Service Hours Per Day:	14.4
Average Revenue Per Day:	\$13.14
Total Passenger Trips	286
NonBillable No Shows:	8
Rider Cancels:	114
Subscription Rides:	153
Demand Rides:	133
Immediate Rides:	9
In Area Rides:	286
Out of Area Rides:	0
In County Rides:	286
Out of County Rides:	0
Unduplicated Riders:	40
Denied Rides:	4
Ambulatory Rides:	201
Non Ambulatory Rides:	85
Accidents:	0
Breakdowns:	0
Wait Hours:	0.0
Escort Hours:	0.0
Trainee Hours:	0.0
Fuel Cost:	\$4,305.06
Gallons Fuel:	446.6
Fuel Cost Per Gallon	\$9.64

Daily Management Statistics Report

C.E.F.S. Eco. Opp. Corp.

11/01/2020 - 11/30/2020

Moultrie

Days of Service:	19
Invoice Revenue:	\$834.90
Fares Collected:	\$132.00
Total Revenue:	\$966.90
ServiceMiles:	2042
Non-Service/Admin Miles:	1,267
Service Hours:	247.85002
NonService Hours:	3.0
Total Billable Riders:	699
Average Revenue Per Ride:	\$1.38
Average Miles Per Ride:	2.9
Average Hours Per Ride:	0.3546
Average Rides Per Day:	36.8
Average Service Miles Per Day:	107.5
Average Service Hours Per Day:	13.0
Average Revenue Per Day:	\$50.89
Total Passenger Trips	699
NonBillable No Shows:	7
Rider Cancels:	120
Subscription Rides:	331
Demand Rides:	368
Immediate Rides:	7
In Area Rides:	699
Out of Area Rides:	0
In County Rides:	699
Out of County Rides:	0
Unduplicated Riders:	23
Denied Rides:	1
Ambulatory Rides:	699
Non Ambulatory Rides:	0
Accidents:	0
Breakdowns:	0
Wait Hours:	0.0
Escort Hours:	0.0
Trainee Hours:	0.0
Fuel Cost:	\$469.72
Gallons Fuel:	222.6
Fuel Cost Per Gallon	\$2.11

Daily Management Statistics Report

C.E.F.S. Eco. Opp. Corp.

11/01/2020 - 11/30/2020

Shelby

Days of Service:	20
Invoice Revenue:	\$2,962.04
Fares Collected:	\$113.00
Total Revenue:	\$3,075.04
ServiceMiles:	6796
Non-Service/Admin Miles:	1,267
Service Hours:	426.54999
NonService Hours:	3.0
Total Billable Riders:	809
Average Revenue Per Ride:	\$3.80
Average Miles Per Ride:	8.4
Average Hours Per Ride:	0.5273
Average Rides Per Day:	40.5
Average Service Miles Per Day:	339.8
Average Service Hours Per Day:	21.3
Average Revenue Per Day:	\$153.75
Total Passenger Trips	809
NonBillable No Shows:	5
Rider Cancels:	121
Subscription Rides:	323
Demand Rides:	486
Immediate Rides:	19
In Area Rides:	809
Out of Area Rides:	0
In County Rides:	809
Out of County Rides:	0
Unduplicated Riders:	35
Denied Rides:	1
Ambulatory Rides:	799
Non Ambulatory Rides:	10
Accidents:	0
Breakdowns:	0
Wait Hours:	0.0
Escort Hours:	0.0
Trainee Hours:	0.0
Fuel Cost:	\$1,332.88
Gallons Fuel:	597.7
Fuel Cost Per Gallon	\$2.23

[illegible]

Denv Service Renort
C.E.F.S. Eco. Opp. Corp.
Nov 01, 2020 - Nov 30, 2020

Name	Ride Date	Date Denied	Ambulatory	<i>Christian</i>
Smith (CC), Bonnie L	11/03/2020	10/19/2020 15:43	Y	
Chambers, James M	11/10/2020	11/10/2020 06:55	Y	
No availability due to other transports				2
McGrath, Matthew "Matt" S	11/03/2020	11/02/2020 13:16	Y	
Requested time not available				1

Denv Service Renort
C.E.F.S. Eco. Opp. Corp.
Nov 01, 2020 - Nov 30, 2020

Name	Ride Date	Date Denied	Ambulatory	Clay
Wathan, Randy L	11/27/2020	11/13/2020 13:23	Y	
Bray, Ann	11/27/2020	11/13/2020 15:08	Y	
CLOSED				2
Cain, Ashley N	11/18/2020	11/17/2020 11:23	Y	
Requested time not available				1

Denv Service Report
C.E.F.S. Eco. Opp. Corp.
Nov 01, 2020 - Nov 30, 2020

<u>Name</u>	<u>Ride Date</u>	<u>Date Denied</u>	<u>Ambulatory</u>
Bauer, Twana	11/05/2020	10/28/2020 10:56	Y
Webber, Chris	11/03/2020	11/02/2020 13:55	Y
Williams, Christopher "Chris"	11/12/2020	11/12/2020 08:44	Y
Dahms, Leeann M	11/18/2020	11/17/2020 15:25	Y
No availability due to other transports			4

Fayette

Denv Service Report
C.E.F.S. Eco. Opp. Corp.
Nov 01, 2020 - Nov 30, 2020

Name	Ride Date	Date Denied	Ambulatory	<i>Montgomery</i>
Law, Bertha D	11/17/2020	11/17/2020 11:46	Y	
DEMAND RESPONSE NO AVAILABILITY				1
Holt, Martha	11/06/2020	11/02/2020 09:56	Y	
McCullers, Virginia	11/20/2020	11/18/2020 11:46	Y	
Satorius, John D	11/20/2020	11/18/2020 12:34	N	
No availability due to other transports				3

Denv Service Renort
C.E.F.S. Eco. Opp. Corp.
Nov 01, 2020 - Nov 30, 2020

<u>Name</u>	<u>Ride Date</u>	<u>Date Denied</u>	<u>Ambulatory</u>
Glick, Nancy	11/18/2020	11/18/2020 06:05	Y
No availability due to other transports			1

Denv Service Renort
C.E.F.S. Eco. Opp. Corp.
Nov 01, 2020 - Nov 30, 2020

Name	Ride Date	Date Denied	Ambulatory
Leehart, Patricia "Pat"	11/24/2020	11/24/2020 17:00	Y
No availability due to other transports			1

Shelby

Customer Name	County	Term	Expected Units	JUL	AUG	SEP	OCT	NOV	DEC	JAN	FEB	MAR	APR	MAY	JUN	
ROE #12/Buckaroo's (BDC)	CLAY	8/24/20 - 5/19/21	10 per day	0	35	129	107	69								718
Clay County Rehab CTR				0	0	119	144	104								
Clay County Industries CCI				0	0	0	8	28								
				0	38	248	259	173	0	0	0	0	0	0	0	
Mid America Preparatory (MAAPs)	FAVETTE	8/13/20 - 5/12/21	50 per day		497	779	711	440								2427
				0	497	779	711	440	0	0	0	0	0	0	0	
	MONTGOMERY															
	MONTGOMERY															
				0	0	0	0	0	0	0	0	0	0	0	0	0
Prato-Tykes (School Year M-F) (PTDC)	MOULTRE	8/17/20 - 5/19/21	26 per day		131	241	224	229								
Sullivan Dance Studio (SDS)	MOULTRE	8/17/20 - 5/19/21	14 per day		71	133	120	77								899
				0	131	374	394	306	0	0	0	0	0	0	0	
Mid America Preparatory (MAAPs)	SHELBY	8/13/20 - 5/12/21	50 per day		459	791	689	446								
Shelby Co. Community Services SCCS						76	32	23								
				0	459	817	721	469	0	0	0	0	0	0	0	2475
				0	1135	2718	2085	1388	0	0	0	0	0	0	0	6520

Customer Name	County	Term	Quoted/Billed Price	JUL	AUG	SEPT	OCT	NOV	DEC	JAN	FEB	MAR	APR	MAY	JUN	YTD
BOE #12 (Buckaroo) (BDC)	CLAY	8/24/20 - 5/19/21	24.75 per day	\$0.00	\$148.50	\$319.75	\$465.00	\$371.25								\$1,534.50
Clay County Rehabilitation/CCI	CLAY	9/16/20 - 12-31-20	1000.00 month	\$0.00	\$0.00	\$1,000.00	\$1,000.00									\$2,000.00
				\$0.00	\$1,481.50	\$1,519.75	\$1,495.00	\$371.25	\$0.00	\$0.00	\$0.00	\$0.00	\$0.00	\$0.00	\$0.00	\$3,944.50
Mid America Preparatory (FMAG)	FAVETTE	8/13/20 - 5/12/21	162.50 per day	\$0.00	\$2,031.25	\$3,412.50	\$1,087.50	\$2,600.00								\$11,131.25
				\$0.00	\$2,031.25	\$3,412.50	\$1,087.50	\$2,600.00	\$0.00	\$0.00	\$0.00	\$0.00	\$0.00	\$0.00	\$0.00	\$11,131.25
	MONTGOMERY			\$0.00	\$0.00	\$0.00	\$0.00	\$0.00	\$0.00	\$0.00	\$0.00	\$0.00	\$0.00	\$0.00	\$0.00	\$0.00
				\$0.00	\$0.00	\$0.00	\$0.00	\$0.00	\$0.00	\$0.00	\$0.00	\$0.00	\$0.00	\$0.00	\$0.00	\$0.00
				\$0.00	\$0.00	\$0.00	\$0.00	\$0.00	\$0.00	\$0.00	\$0.00	\$0.00	\$0.00	\$0.00	\$0.00	\$0.00
Proto-Tyco (School Year M-F) (PTDC)	MOULTRIE	8/17/20 - 5/19/21	39.00 per day		\$435.60	\$752.40	\$752.40	\$554.40								\$2,494.80
			15.00 per day one		\$165.00	\$752.40	\$752.40	\$554.40								\$2,494.80
Sullivan Dance Studio (SPS)	MOULTRIE	8/17/20 - 5/19/21	1100 (\$22 for two tiers)	\$0.00	\$435.60	\$752.40	\$752.40	\$554.40	\$0.00	\$0.00	\$0.00	\$0.00	\$0.00	\$0.00	\$0.00	\$2,494.80
Mid America Preparatory (SMAPS)	SHELBY	8/13/20 - 5/12/21	162.50 per day	\$0.00	\$2,031.25	\$3,412.50	\$1,087.50	\$2,600.00								\$11,131.25
SCCS	SHELBY	8/13/20 - 5/12/21	3206 month	\$0.00	\$0.00	\$3,206.00	\$3,206.00									\$11,834.50
				\$0.00	\$3,206.00	\$3,206.00	\$3,206.00		\$0.00	\$0.00	\$0.00	\$0.00	\$0.00	\$0.00	\$0.00	\$11,834.50
				\$0.00	\$4,727.85	\$9,403.15	\$8,728.40	\$6,135.65	\$0.00	\$0.00	\$0.00	\$0.00	\$0.00	\$0.00	\$0.00	\$28,985.05

MOBILITY MANAGER MONTHLY REPORT

Mobility Manager: Nathan Nichols

Counties: Shelby, Christian, Moultrie, Montgomery, Clay, Fayette

Month: Nov

New Contracts Ran/date/length of contract/Units

Continuing Contracts/Units

Shelby MAPS (Code SMAPS)- 446

Moultrie Proto-Tykes (Code PTDC)- 229

Moultrie Sullivan Dance Studio (Code SDS)- 77

Clay ROE #12 (Buckaroos) (Code BDC)- 69

Fayette MAPS (Code FMAPS)- 440

Shelby GAP (Code GAP, GAPAIDE)- TBD

Montgomery Fayco (Code FAM, MFA, FA)- N/A

Shelby SCCS Code SCCS 2 F,S,SSW,CH)- N/A

Fayette Fayco (Code) N/A

Meetings/Events Attended:

11/5- HSHS Community Outreach Virtual Event/Zoom

11/17- Webinar Safe Fleet- Strategies for Rebuilding- Primary discussion on sanitizing buses and best ways to document that. Relay that to customers in hope of boosting ridership.

Presentations:

Marketing Efforts:

Fliers/info/advertising to locations in county

Shelby-

Christian- Pana

Taylorville- 11/18- Shadow House, Rethreads, Taylorville Food Center, Library.

Montgomery- 11/4- Fillmore- Security Bank, Post Office.

Hillsboro- 11/19- Butler's Coin Laundry, Salvation Army

Litchfield- 11/4- Hearts United

11/19- Hearts United, Speedwash, Library, Senior Center, Salvation Army, Job Center, Litchfield Laundry. Met a man at Litchfield Laundry while posting fliers, he asked about our service and I gave him a tri-fold.

Moultrie-11/25- Sullivan- IGA, Habitat Restore, thrifty Boutique, Post Office, B&J Antiques

Bethany- Post Office, Library

Clay- 11/30- CIPT info put in Chamber release.

Fayette- 11/3- Shobonier- Post Office. Country- Lutheran Church, Country Store. St. Peter- Post Office, First State Bank, Hair It Is, Wilberton Insurance. Farina- American Legion/Community Building, Post Office, Midland Bank, 1st Southern Baptist Church, Calvary Pentecostal Church

Other:

11/18- Tri-folds given to Christian Outreach to send out in their mailings.

TRANSPORTATION MAINTENANCE REPORT

MONTH OF NOVEMBER 2020

Total Number of vehicles receiving services: 24

Total Number of Services completed: 34

OUTSOURCED MAINTENANCE

VEHICLE	DATE	SERVICE COMPLETED	SERVICE PROVIDER	COST LABOR	COST PARTS
22-1	11/25/20	COOLANT LEAK	H&W	82.08	N/A
26-7	11/9/20	PASS AIR BAG LIGHT	SMTD	100.00	N/A
14-26	11/2/20	ALIGNMENT	MOOMAWS	393.75	399.94
26-1	11/16/20	NEW WINDSHIELD	T&T GLASS	148.50	210.00

IN HOUSE MAINTENANCE

VEHICLE	DATE	SERVICES COMPLETED	ESTIMATED HOURS OF LABOR	COST PARTS
14-25	11/4/20	TENSIONER & BELT	3	165.02
14-11	11/20/20	COOLENT LEAK	2	61.00
6-20	11/18/20	LEVEL C	1	67.99
14-29	11/13/20	LEVEL B/ EXHAUST REPAIR	2.5	118.32
14-16	11/2/20	LEVEL A	1.5	85.82
14-37	11/30/20	LEVEL C/ NEW TIRES FT	3	321.61
14-32	11/24/20	LEVEL C	2	57.73
14-43	11/20/20	LEVEL A/ NEW HEADLIGHT	1.5	74.51
6-11	11/19/20	LEVEL C/NEW TIRES FT	2.5	333.82
26-6	11/17/20	LEVEL C	2	114.23
6-17	11/17/20	LEVEL A	1.5	47.39
26-3	11/5/20	LEVEL A	2	115.31

14-42	11/2/20	LEVEL A	1.5	46.29
6-1	11/13/20	EVAP SYS REP	4	351.59
14-18	11/16/20	NEW STARTER	1.5	165.85
14-33	11/3/20	LEVEL A / NEW BRAKES & ROTORS FT / 6 NEW TIRES	5.5	631.90
14-22	11/12/20	FENDER REP / LIGHT REP	2	39.98
SCCS-6	11/18/20	LEVEL A /ROTATE TIRE/ REP TIRE	2	57.72
26-1	11/6/20	LEVEL C	2.5	219.40
SCCS-5	11/2/20	LEVEL A	1.5	47.14

STATE INSPECTIONS

VEHICLE	DATE DUE	DATE COMPLETED	NEXT DUE DATE
14-16	11/20	11/16/20	5/21
6-20	11/20	11/10/20	5-21
6-17	11/20	11/16/20	5/21
14-40	11/20	11/9/20	5/21
26-2	11/20	11/16/20	5/21
14-18	11/20	11/16/20	5/21
6-16	11/20	11/30/20	5/21
14-41	11/20	11/25/20	5/21
6-18	11/20	11/25/20	5/21
SC-1	11/20	11/10/20	5/21
14-13	11/20	11/10/20	5/21
26-1	11/20	11/10/20	5/21
14-6	11/20	11/9/20	5/21

LEVEL A/B/C PREVENTATIVE MAINTENANCE

VEHICLE	LEVEL A/B/C	DATE OF SERVICE	PREVIOUS LEVEL A/B/C MILEAGE	CURRENT LEVEL A/B/C MILEAGE	MILEAGE DIFFERENCE
6-20	C	11/28/20	13098	17730	4632
14-16	A	11/5/20	176877	181537	4660
14-37	C	11/30/20	33990	38508	4518
14-32	C	11/24/20	61359	66000	4641
14-43	A	11/20/20	0	4658	4658
6-11	C	11/19/20	48115	52682	4567
26-6	C	11/17/20	21147	26000	4853

6-17	A	11/17/20	27926	32562
26-3	A	11/5/20	39805	44565
14-42	A	11/2/20	0	4563
14-33	A	11/3/20	48233	52810
SCCS-6	A	11/18/20	49433	54030
26-1	C	11/6/20	78904	83714
SCCS-5	A	11/2/20	68744	73346

Vehicles placed out of service (list fleet #): 14-15 26-7

Percentage of vehicles complete within allowance: 100%

Maintenance Facility Repairs/Inspections:

Staff Trainings:

UNITED COUNTIES COUNCIL OF ILLINOIS

217 E. Monroe, Suite 101
Springfield, IL 62701

JPMORGAN CHASE BANK, NA
Springfield, IL 62701
2-1/710

31966

12/9/2020

PAY TO THE
ORDER OF Shelby County

\$ **1,500.00

One Thousand Five Hundred and 00/100***** DOLLARS

PROTECTED AGAINST FRAUD

Shelby County

MEMO

W. M. McPerry

⑈031966⑈ ⑆071000013⑆ 212022818⑈

UNITED COUNTIES COUNCIL OF ILLINOIS

Shelby County

12/9/2020

31966

1,500.00

FILED
DEC 21 2020

Jessie Fox
SHELBY COUNTY CLERK

Checking

1,500.00



UNITED COUNTIES COUNCIL OF ILLINOIS

FILED
DEC 21 2020

Jamie Cox
SHELBY COUNTY CLERK

STRONG FINANCIAL POSITION ALLOWS BOARD TO REFUND 2020 DUES

At the November 23, 2020 UCCI Membership meeting, action was taken as it relates to 2020 dues paid by UCCI members as follows:

- UCCI members will receive a refund of 2020 dues based on the voting member dues amount paid.

**(UCCI refund check is included with this mailing
for those counties who paid dues for 2020)**

**Please be advised that the following long-standing practices/protocols,
as previously recommended by the Executive Committee and adopted,
will remain in effect for 2021:**

- Those counties participating in the ICRMT insurance program will receive an 80% discount on their dues.
- Those counties joining UCCI as a new member will receive a 50% discount on their first year's dues.
- There shall be no attendance or registration fee for participation in conferences/educational programs sponsored by UCCI.
- Member counties will be paid an attendance stipend of \$400.00, together with one round-trip mileage reimbursement (local county seat to UCCI office in Springfield), for each (in-person) regularly scheduled UCCI Membership meeting at which they have a representative in attendance. Reimbursement payments will be made on a quarterly basis.

**UCCI 2021 dues statement is enclosed
2021 dues are payable January 1, 2021**

January 14, 2021 County Board Chairman Appointments

Annie Reid – reappoint to Mental Health “708” Board

Penny Standerfer – reappoint to Mental Health “708” Board

William Kroncke – appoint to the Sheriff’s Merit Commission to replace Ike Downs who resigned

Gary Crowder – appoint to the Sheriff’s Merit Commission to replace Steve Thompson who resigned

Ramiro Estrada – appoint to the ETSB 9-1-1 Board as the Public Safety Appointee

Committee appointments as listed on the master sheet of county board committees

COUNTY BOARD COMMITTEES

FEES & SALARIES:

David Swits

Barbara Bennett
Patrick Lines

PURCHASING:

John Pogue

Gary Gergeni
Jeff Slifer
Lynn Williams
Kenneth Barr
Don Tate
Paul Canaday

COUNTY FARM:

Jesse Durbin

Mark Bennett
John Pogue

FINANCE:

Gary Gergeni

Rod Hite
Larry Lenz
Gary Patterson
Terry Metzger

ANIMAL CONTROL:

Terry Metzger

Jeff Slifer
Robert Simpson

ROAD & BRIDGE:

Bryon Coffman

Robert Simpson
Larry Lenz
Jesse Durbin

COUNTY PUBLIC HEALTH:

Jeff Slifer

Lynn Williams
Jesse Durbin
Rod Hite
Ken Barr

EMA:

Dennis Drnjevic

Earl Baker
Rod Hite

LAW ENFORCEMENT:

Gary Patterson

Derek Percy
John Pogue

ZONING:

Robert Simpson

Terry Metzger
Dennis Drnjevic

AIRPORT:

Earl Baker

Paul Canaday
Derek Percy

PUBLIC BUILDINGS:

Don Tate

Ken Barr
Jeff Slifer
Gary Gergeni
John Pogue

MISCELLANEOUS/AMBULANCE:

David Swits

Mark Bennett
Don Tate
Bryon Coffman
Dennis Drnjevic

LIQUOR:

Board Chairman

Mark Bennett
Don Tate

LEGISLATIVE:

Patrick Lines

Gary Gergeni
Rod Hite
Dennis Drnjevic
Barbara Bennett

PUBLIC AID:

Board Chairman

Lynn Williams (D)
Larry Lenz (R)
Dennis Drnjevic (D)
David Swits (R)

INSURANCE RISK MGMT:

Barbara Bennett

Bryon Coffman
Terry Metzger

EXECUTIVE:

Board Chairman

Bryon Coffman
Patrick Lines
David Swits
Gary Gergeni
John Pogue

Effective Jan. 15, 2021